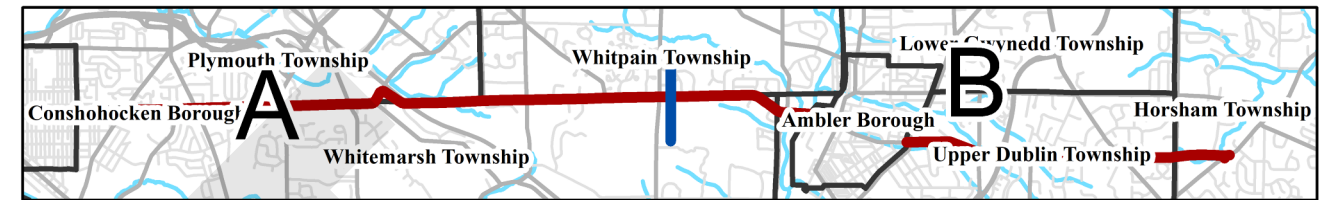


# Butler Pike | Key Issues

## Corridor-Wide Issues

- Limited pedestrian and bicycle facilities and lack of connectivity
- Need for better bus stops, including amenities and pedestrian connections
- Poor access management for existing shopping centers
- Inadequate stormwater management
- Limited shoulders
- Closely spaced signals with the need for improved signal coordination and upgraded signal technologies



### Intersection with Narcissa Road

- Intersection geometry (sharp curve, topography, and offset/stop controlled intersection) cause safety deficiencies

### Intersection with Plymouth Road/Flourtown Road

- Capacity deficiencies

### Intersection with Township Line Road

- Capacity deficiencies

### Intersection with Skippack Pike

- High traffic volumes and heavy turning movements cause operational deficiencies
- Lack of bicycle and pedestrian connections to Broad Axe Village



### Intersection with North Lane

- Capacity deficiencies

### North Lane to Ridge Pike including Ridge Pike Intersection

- Lack of pedestrian connections to surrounding destinations
- Lack of bus stop amenities and pedestrian connections
- Need for signal retiming

### Intersection with Germantown Pike

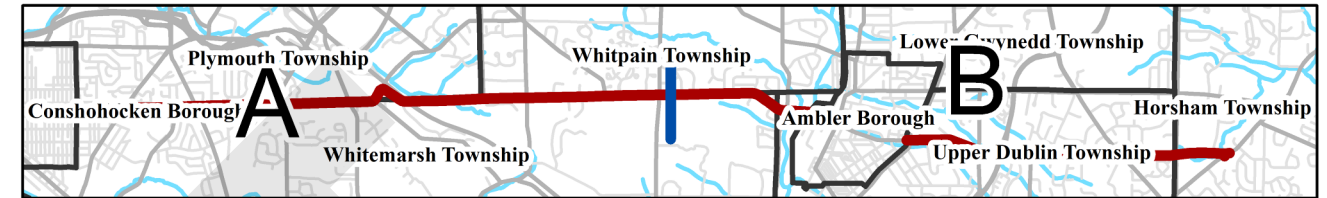
- Unusual intersection geometry (offset) causes safety and operational deficiencies
- High concentration of crashes
- Congestion and capacity issues on Germantown Pike at the intersection
- Need for new/upgraded sidewalks and pedestrian crossings at the intersection
- Desire to provide a connection between Butler Pike and the Cross County Trail (at the intersection of Germantown Pike and Chemical Road)
- Crossroads within the Plymouth Meeting Village National Historic Register District with several historic resources nearby

## Legend

- Butler Pike
- Bridges
- 🚦 Traffic Signals
- Intersecting Road Ownership**
- PennDOT
- Local Roads
- Municipal Boundaries



# Butler Pike | Key Issues



## Corridor-Wide Issues

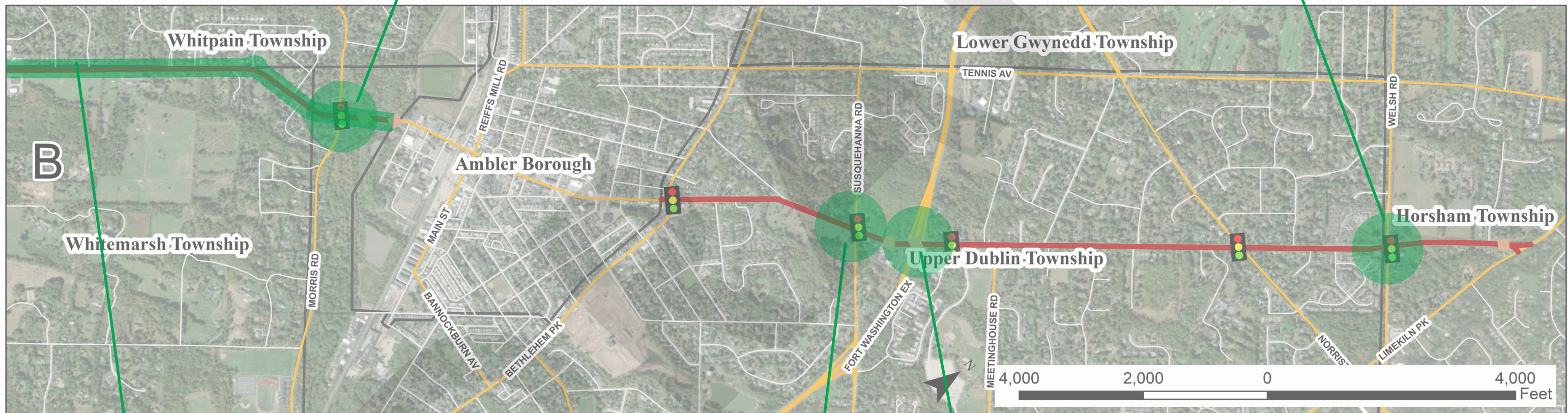
- Limited pedestrian and bicycle facilities and lack of connectivity
- Need for better bus stops, including amenities and pedestrian connections
- Poor access management for existing shopping centers
- Inadequate stormwater management
- Limited shoulders
- Closely spaced traffic signals with the need for improved coordination and upgraded signal technologies

### Intersection with Morris Road

- Heavy turning movements cause operational deficiencies

### Intersection with Welsh Road

- Heavy left turn movements
- Poor site distance
- Lack of pedestrian crossings



### Skippack Pike to Ambler Borough

- Need for improved pedestrian or multi-use trail connection
- Need to connect and provide a safe crossing for the Wissahickon Green Ribbon Trail

### Intersection with Susquehanna Road

- Lack of bicycle and pedestrian facilities
- Need for improved traffic signal timing

### Route 309 Interchange

- Trash and debris build-up

## Legend

- Butler Pike
- Bridges
- 🚦 Traffic Signals
- Intersecting Road Ownership**
- PennDOT
- Local Roads
- ▭ Municipal Boundaries