

Easton Road | Key Issues

Corridor-Wide Issues

- Poor access management near older shopping centers
- Gaps in sidewalk network, pedestrian crossing deficiencies and lack of bicycle facilities
- Need for additional parking at train stations and commercial villages
- Inadequate amenities/access to bus stops
- Closely spaced signals with the need for improved signal coordination and upgraded technologies create operational issues, including aggressive driving



Intersection with Limekiln Pike

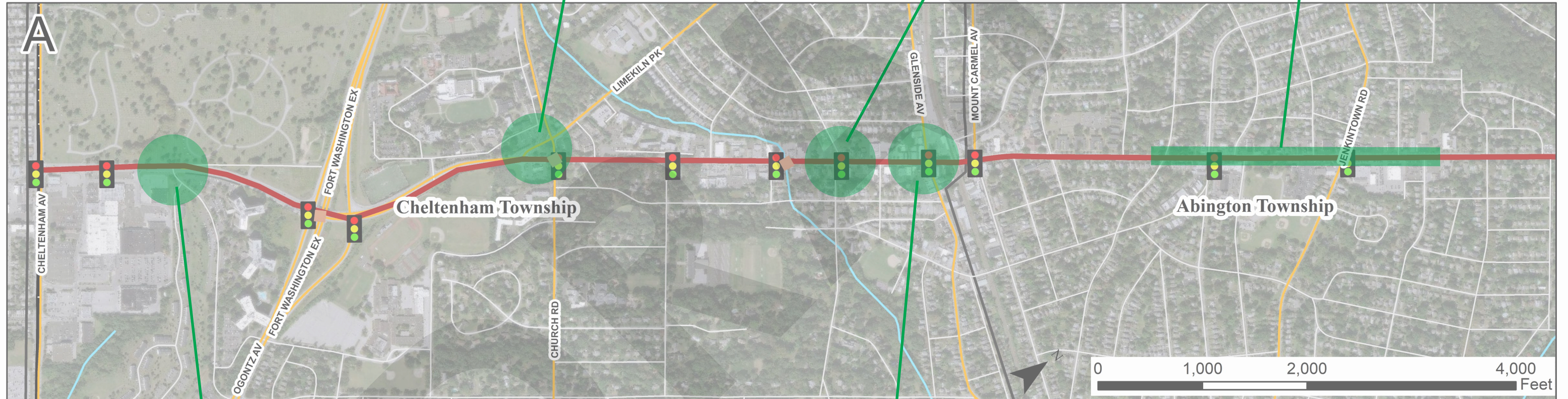
- Transition from 4-lane cross section (to the south) to 2-lane cross section (to the north) creates traffic congestion and safety issues
- Median poses barrier to pedestrians
- Planned pedestrian bridge

Intersection with Waverly Road

- Offset intersection creates traffic operations and pedestrian safety issues

Keswick Village Area

- Redevelopment opportunities
- Stormwater drainage issues cause occasional flooding



Intersection with Greenwood Avenue

- High pedestrian volumes—no crosswalk to access bus stops
- Left turns from Greenwood Avenue prohibited, but not obeyed

Intersection with Glenside Avenue

- Congestion due to left turning vehicles (lacking left turn lanes on Glenside Avenue)
- Planned redevelopment in this area

Legend

- Easton Road
- Bridges
- Traffic Signals
- Intersecting Road Ownership**
- PennDOT
- Local Roads
- Municipal Boundaries

Easton Road | Key Issues

Corridor-Wide Issues

- Poor access management near older shopping centers
- Gaps in sidewalk network, pedestrian crossing deficiencies and lack of bicycle facilities
- Need for additional parking at train stations and commercial villages
- Inadequate amenities/access to bus stops
- Closely spaced signals with the need for improved signal coordination and upgraded technologies create operational issues, including aggressive driving

Intersection with Hamilton Avenue

- Traffic issues related to cut-through traffic at offset intersection

Roslyn

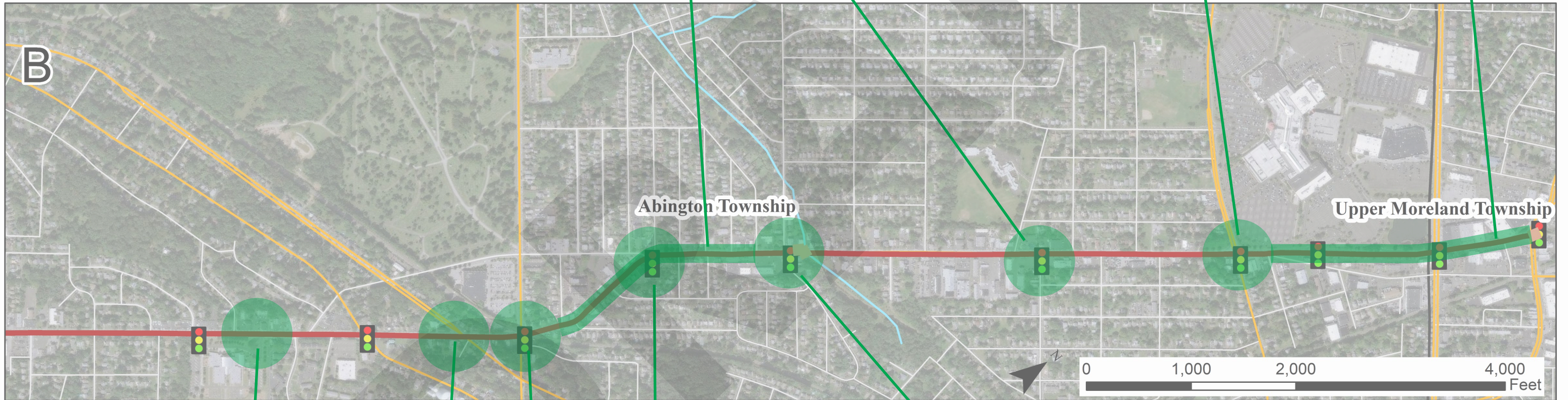
- Transit Oriented Development and revitalization targeted for area around train station

Willow Grove Area

- Increase in pedestrian volumes expected due to recent constructed and proposed multifamily residential development around commercial areas
- Improved pedestrian crossings at intersections needed due to high volumes of turning movements at key intersections
- Grant received recently for wayfinding signage
- Additional parking supply needed for small retail business

Intersection with Old Welsh Road

- Concentration of crashes



Copper Beach Elementary

- Congestion and safety concerns related to vehicular and pedestrian traffic generated by school

Intersection with Tyson Avenue

- Pedestrian access to Roslyn Station
- Concentration of crashes

Intersection with Susquehanna Road

- Congestion when train stops at Roslyn Station
- Concentration of crashes
- Pedestrian access to Roslyn Station

Intersection with Bradfield Road

- Traffic operations issues due to intersection alignment

Intersection with Woodland Road

- Concentration of crashes
- Undersized culvert leads to flooding

Legend

- Easton Road
- Bridges
- 🚦 Traffic Signals
- Intersecting Road Ownership**
- PennDOT
- Local Roads
- ▭ Municipal Boundaries

