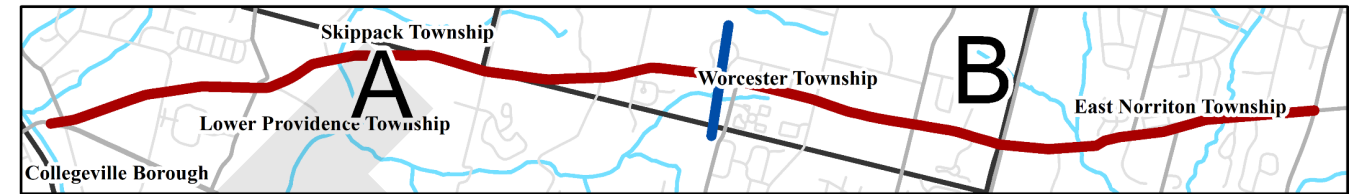


Germantown Pike | Key Issues



Corridor-Wide Issues

- Inconsistent lane configuration creates pinch points and poses safety concerns
- Traffic congestion, particularly at key intersections and at the eastern and western ends of the project corridor
- Numerous driveways and curb cuts along the corridor impacts safety and operations
- Lack of continuous and connected infrastructure for walking and biking

Intersection with Evansburg Road

- Traffic congestion during peak
- Evaluation underway for the addition of left-turn advance signal phases
- Township securing right-of-way for the addition of left turn lanes in the future



Intersection with Ridge Pike

- Final design underway for Perkiomen Crossing Phase 1: Ridge Pike/Germantown Pike Re-alignment
- Proposed improvements include elimination of the Y intersection, building a connector roadway, moving the intersection east, and sidewalk connections
- Future plans for Phase 2 that include a second bridge over the Perkiomen Creek are unfunded

Skippack Creek Crossing and Evansburg State Park Connections

- Need for bicycle and pedestrian connections and particularly connections to Evansburg State Park and the trails within the park
- County-owned bridge carrying Germantown Pike over Skippack Creek is a stone arch structure with limited options for widening — rehabilitated last in 2013
- Flooding at bridge over Skippack Creek during severe weather events

Legend

- Germantown Pike
- Bridges
- Traffic Signals
- Intersecting Road Ownership**
- PennDOT
- Local Roads
- Municipal Boundaries

Germantown Pike | Key Issues

Corridor-Wide Issues

- Inconsistent lane configuration creates pinch points and poses safety concerns
- Traffic congestion, particularly at key intersections and at the eastern and western ends of the project corridor
- Numerous driveways and curb cuts along the corridor impacts safety and operations
- Lack of continuous and connected infrastructure for walking and biking

Intersection with Trooper Road

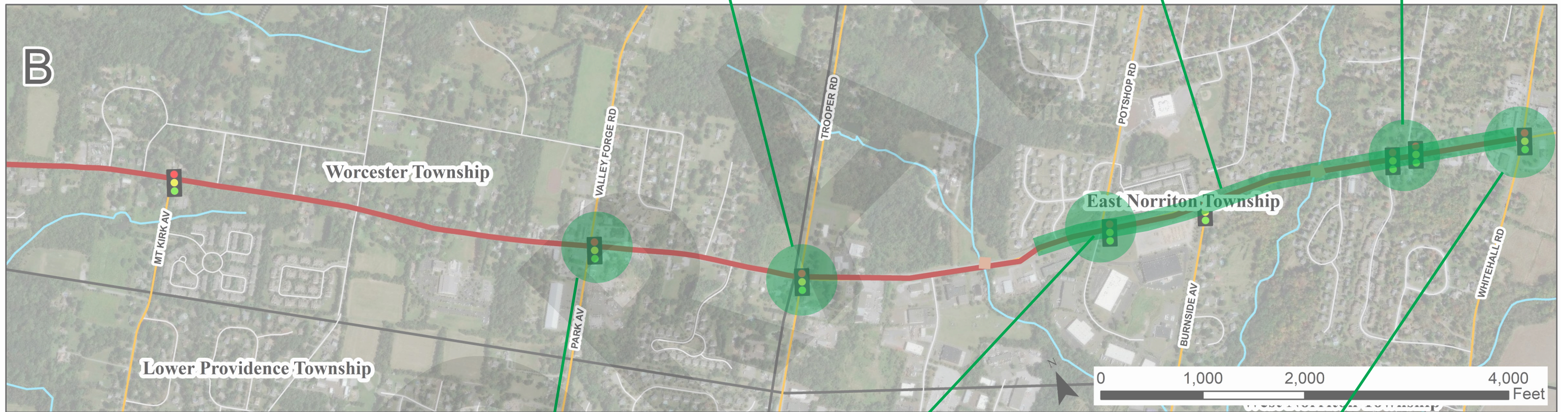
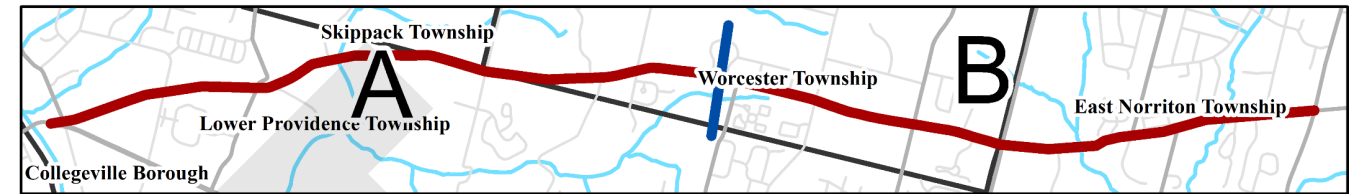
- Skewed and slightly offset alignment of Trooper Road impacts traffic operations and safety
- Need for dedicated turn lanes

Between Potshop Road and Whitehall Road

- Traffic congestion and operational issues due to heavy turning movements and changes in the cross section

Intersection with Sunset Avenue and Sandra Lane

- Offset and closely spaced intersections
- Need for updated traffic signal equipment



Intersection with Valley Forge Road / Park Ave

- Traffic congestion due to heavy turning movements and change in cross section
- Transition between 3-lane cross section (to the west) and 2-lane cross section (to the east)
- Crash density higher than corridor average
- Limited sidewalks and bus stop infrastructure, particularly on Valley Forge Road and Park Avenue at the intersection

Intersection with Potshop Road and Change in Cross Section

- Transition from 2-lane cross section (to the west) to 3-lane cross section (to the east) creates safety and operational issues
- Gaps in sidewalk and trail network

Intersection with Whitehall Road and Change in Cross Section

- Transition between a 5-lane cross section (to the west) and a 2-lane cross section (to the east) creates safety and operational issues
- Crash density higher than corridor average
- Right-turn slip lanes and commercial driveways near the intersection impact traffic operations and safety
- Pedestrian crosswalks at the intersection, but limited connecting sidewalks and need for improved access to Norristown Farm Park

Legend

- Germantown Pike
- Bridges
- 🚦 Traffic Signals
- Intersecting Road Ownership**
- PennDOT
- Local Roads
- ▭ Municipal Boundaries