

# MONTCO PIKES | A VISION PLAN FOR SIX COUNTY CORRIDORS

## ABOUT MONTCO PIKES

Montgomery County owns 75 miles of roadways throughout the county. Many date to colonial times and began as private turnpikes. As part of the Montco Pikes project, the county is taking a closer look at six main corridors to ensure these roadways will support twenty-first century lifestyles. An overall vision has been established for the future of Easton Road, Butler Pike, Germantown Pike, Sumneytown Pike, Geryville Pike, and Swamp Pike.

This brochure highlights the vision and potential improvements for **Butler Pike**.



## BUTLER PIKE TODAY

This study focuses on a segment of Butler Pike in Plymouth Township, Whitemarsh Township, Whitpain Township, Upper Dublin Township, and Horsham Township. The study limits begin at the Butler Pike intersection with North Lane in Plymouth Township to the intersection with Limekiln Pike (PA 152) in Horsham Township. It does not include the segment within Ambler Borough, which is locally known as Butler Avenue.

Functional Classification	Length	Daily Traffic Volume	Posted Speed Limit	Land Use Context
Principal Arterial	~ 9 Miles	8,000-12,000	25-35	Suburban/Commercial

## KEY ISSUES

**Safety**—Safety and traffic issues due to poor intersection design, high vehicular volume of turning movements, and lack of pedestrian crossings

**Walking & Biking**—Much of the corridor lacks basic facilities to support biking and walking—sidewalks, trails, and/or on-road bicycle facilities

**Access Management**—Close spacing of commercial (business) driveways impacts the safety and operations of vehicular travel and bicycles and pedestrians

**Traffic Signals**—The close spacing of intersections and lack of traffic signal coordination negatively impact traffic operations

**Roadside Constraints**—Structures, utility poles, residential fences/ decorative walls, and heavily vegetated areas close to the roadway impact the feasibility of implementing improvements that require more right-of-way



Poor Intersection Design of Butler Pike and Germantown Pike



Narrow Shoulder and Roadside Constraints Along Butler Pike

For additional information visit:  
<https://www.montcopa.org/montcopikes>

Provide input at: <https://montcopikes.mindmixer.com/>



# Butler Pike | Corridor Improvements

**Corridor-Wide Improvement Strategies**

- Add bicycle and pedestrian facilities and fill in the gaps between existing facilities
- Improve bus stops including amenities, and provide better pedestrian connections
- Improve access management in commercial areas
- Upgrade storm water management facilities
- Add shoulders and widen existing shoulders to preferred width
- Upgrade traffic signals and provide improved coordination systems between closely spaced intersections



**Intersection with Plymouth Road/Flourtown Road**



- Add turning lanes
- Traffic signal upgrades

**Intersection with Narcissa Road**



- Realignment
- Improve horizontal/vertical geometry

**Intersection with Skippack Pike**



- Add turning lanes
- Traffic signal upgrades
- Add/Upgrade pedestrian and bicycle facilities in Broad Axe



**Intersection with North Lane**



- Add turning lanes

**North Lane to Ridge Pike including Ridge Pike Intersection**



- Traffic signal upgrades
- Upgrade pedestrian facilities
- Bus stop amenities

**Intersection with Germantown Pike**



- Realign intersection
- Reduce number of driveways
- Add turning lanes
- Traffic signal upgrades
- Upgrade pedestrian crossings and signals

**Intersection with Township Line Road**



- Add turning lanes
- Add traffic signal

**Legend**

- Butler Pike
- Bridges
- Traffic Signals

**Improvement Type**

- Intersection
- Roadway
- Pedestrian/Bicycle
- Transit
- Parking
- Maintenance



# Butler Pike | Corridor Improvements

- Corridor-Wide Improvement Strategies**
- Add bicycle and pedestrian facilities and fill in the gaps between existing facilities
  - Improve bus stops including amenities, and provide better pedestrian connections
  - Improve access management in commercial areas
  - Upgrade storm water management facilities
  - Add shoulders and widen existing shoulders to preferred width
  - Upgrade traffic signals and provide improved coordination systems between closely spaced intersections



## Intersection with Morris Road

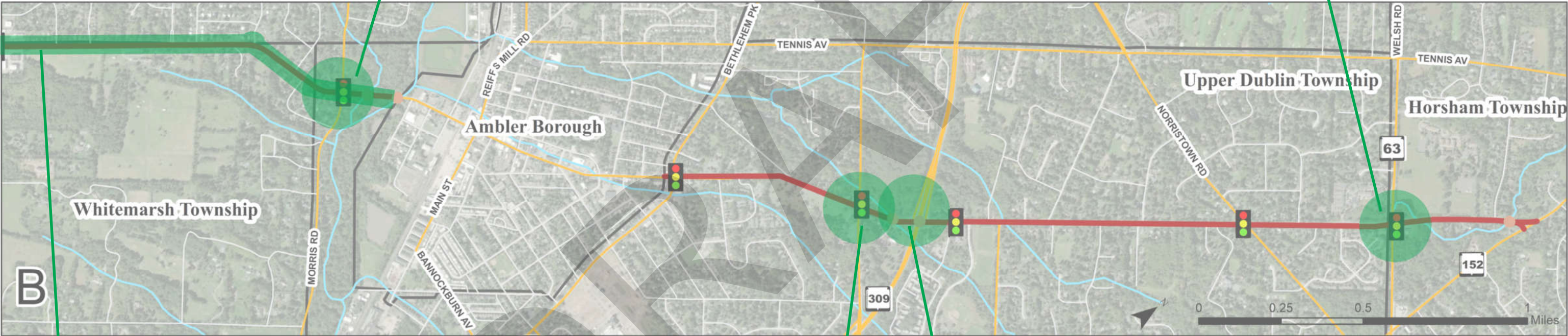


- Add turning lanes
- Traffic signal upgrades

## Intersection with Welsh Road



- Add turning lanes
- Realignment
- Upgrade pedestrian crossings and signals



## Skippack Pike to Ambler Borough



- Need for improved pedestrian or multi-use trail connection
- Need to connect and provide a safe crossing for the Wissahickon Green Ribbon Trail

## Intersection with Susquehanna Road



- Upgrade pedestrian crossings and signals
- Traffic signal upgrades

## Route 309 Interchange



- Improve trash and debris collection

**Legend**

- Butler Pike
- Bridges
- Traffic Signals

**Improvement Type**

- Intersection
- Roadway
- Pedestrian/Bicycle
- Transit
- Parking
- Maintenance

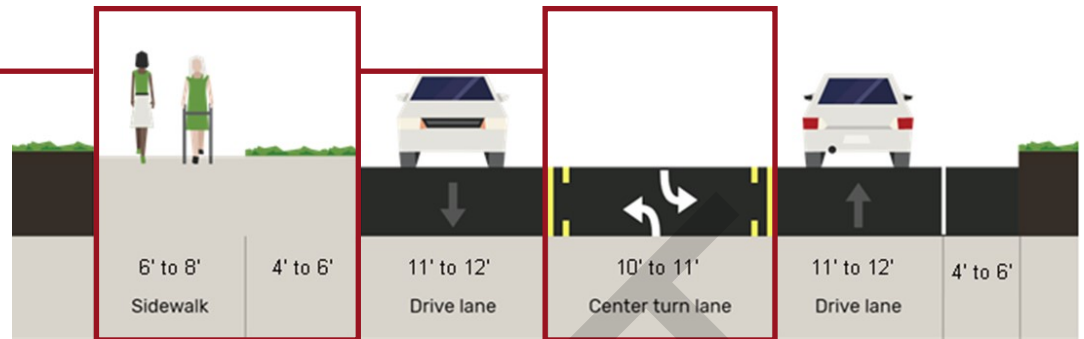
## BUTLER PIKE POTENTIAL FUTURE CROSS SECTIONS

Future typical cross sections have been prepared that address current deficiencies and serve the future needs of Butler Pike. The cross sections consider the Montgomery County Complete Streets Policy, existing constraints, stakeholder/public input, and recommendations from previous planning studies.

### North Lane to Campus Drive

#### Identified Improvements

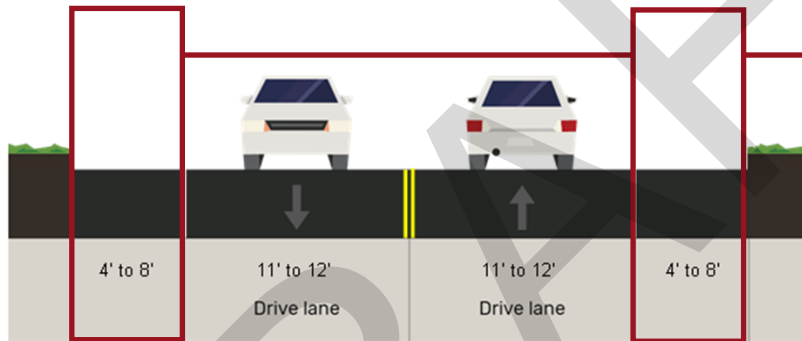
- Buffer / Verge area between sidewalk and travel lanes
- Consistent sidewalk design
- Extend limits of existing center turn lane between Ride Pike and Flourtown Road



### Campus Drive to Locust Street

#### Identified Improvements

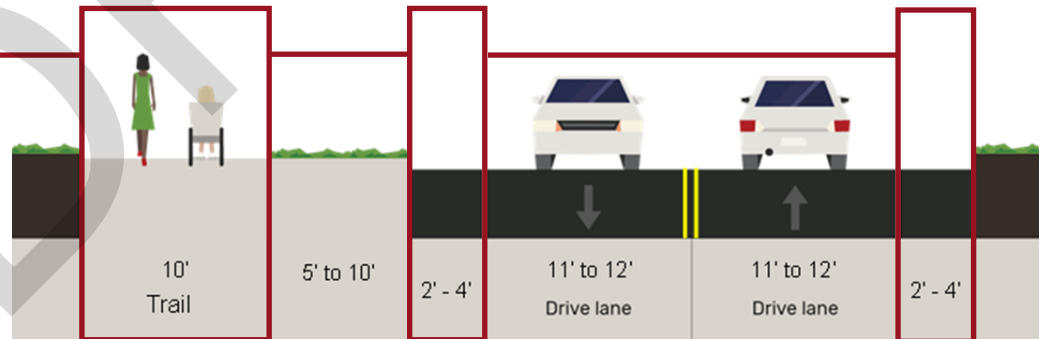
- Consistent shoulder width



### Bethlehem Pike to PA 152—Limekiln Pike

#### Identified Improvements

- Consistent shoulder width
- Multi-use path or sidewalk on one side of the road



## OPPORTUNITIES FOR INPUT

For questions about the project, please contact Matthew Popek, Montgomery County Planning Commission Transportation Planning Assistant Manager, at [mpopek@montcopa.org](mailto:mpopek@montcopa.org).

For additional information visit: <https://www.montcopa.org/montcopikes>  
Provide input at: <https://montcopikes.mindmixer.com/>