

MONTCO PIKES | A VISION PLAN FOR SIX COUNTY CORRIDORS

ABOUT MONTCO PIKES

Montgomery County owns 75 miles of roadways throughout the county. Many date to colonial times and began as private turnpikes. As part of the Montco Pikes project, the county is taking a closer look at six main corridors to ensure these roadways will support twenty-first century lifestyles. An overall vision has been established for the future of Easton Road, Butler Pike, Germantown Pike, Sumneytown Pike, Geryville Pike, and Swamp Pike.

This brochure highlights the vision and potential improvements for **Germantown Pike**.



GERMANTOWN PIKE TODAY

This study focuses on a segment of Germantown Pike from the intersection with Whitehall Road to the intersection with Ridge Pike; passing through East Norriton Township, Worcester Township, and Lower Providence Township. Germantown Pike provides a connection to and access to key growth areas along US 422, US 202, and the Pennsylvania Turnpike.

Functional Classification	Length	Daily Traffic Volume	Posted Speed Limit	Land Use Context
Principal Arterial	~ 6 Miles	12,000–24,000	35	Suburban/Commercial

KEY ISSUES

Inconsistent Lane Configurations — Transitions between two-lane, two-lane with a center left-turn lane, and three-lane cross sections, creates confusion and pinch points.

Traffic Congestion — Drivers use Germantown Pike and connecting roadways to access the regional highway network, including US 202, US 422, and the PA Turnpike.

Safety — There are safety and operational issues at key intersections with heavy traffic volumes and turning movements that lack adequate through lanes or turning lanes or have skewed or offset alignments.

Walking & Biking — The infrastructure is limited, disconnected, and inconsistent with high traffic volumes and travel speeds can make bicyclists and pedestrians feel unsafe or uncomfortable.

Roadside Constraints — Structures, utility poles, residential fences/decorative walls, and heavily vegetated areas close to the roadway impact the feasibility of implementing improvements that require more right-of-way.



Closely Spaced / Skewed Intersection of Germantown Pike with Sunset Avenue / Sandra Lane



Commercial Driveways near Intersection of Germantown Pike with Park Avenue / Valley Forge Road

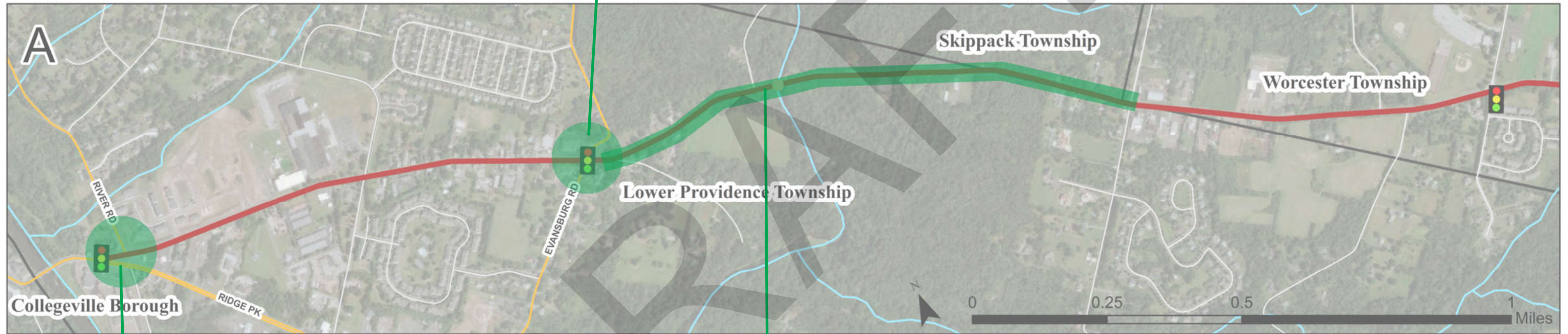
For additional information visit:
<https://www.montcopa.org/montcopikes>

Provide input at: <https://montcopikes.mindmixer.com/>

Germantown Pike | Corridor Improvements

Corridor-Wide Improvement Strategies

- Add bicycle and pedestrian facilities and fill in the gaps between the existing facilities
- Improve access management Provide consistent cross-section on eastern end
- Add shoulders and widen existing shoulders to preferred width
- Upgrade traffic signals and provide improved coordination systems between closely spaced intersections on the eastern end



Intersection with Evansburg Road



- Add turning lanes
- Traffic signal upgrades

Intersection with Ridge Pike



- Final design underway for Perkiomen Crossing Phase 1: Ridge Pike/Germantown Pike Re-alignment
- Proposed improvements include elimination of the Y intersection, building a connector roadway, moving the intersection east, and sidewalk connections
- Future plans for Phase 2 that include a second bridge over the Perkiomen Creek are unfunded

Skippack Creek Crossing and Evansburg State Park Connections



- Add/upgrade pedestrian and bicycle facilities
- Provide bike lanes through Evansburg Village

Legend

- Germantown Pike
- Bridges
- 🚦 Traffic Signals
- Improvement Type**
- ⊕ Intersection
- 🛣️ Roadway
- 🚲 Pedestrian/Bicycle
- 🚌 Transit
- 🚗 Parking
- ⚠️ Maintenance

Germantown Pike | Corridor Improvements

Corridor-Wide Improvement Strategies

- Add bicycle and pedestrian facilities and fill in the gaps between the existing facilities
- Improve access management Provide consistent cross-section on eastern end
- Add shoulders and widen existing shoulders to preferred width
- Upgrade traffic signals and provide improved coordination systems between closely spaced intersections on the eastern end

Intersection with Trooper Road



- Provide a 5-lane cross section on eastern leg
- Convert climbing lane to center left-turn lane
- Traffic signal upgrades
- Add/upgrade pedestrian and bicycle facilities

Between Potshop Road and Whitehall Road

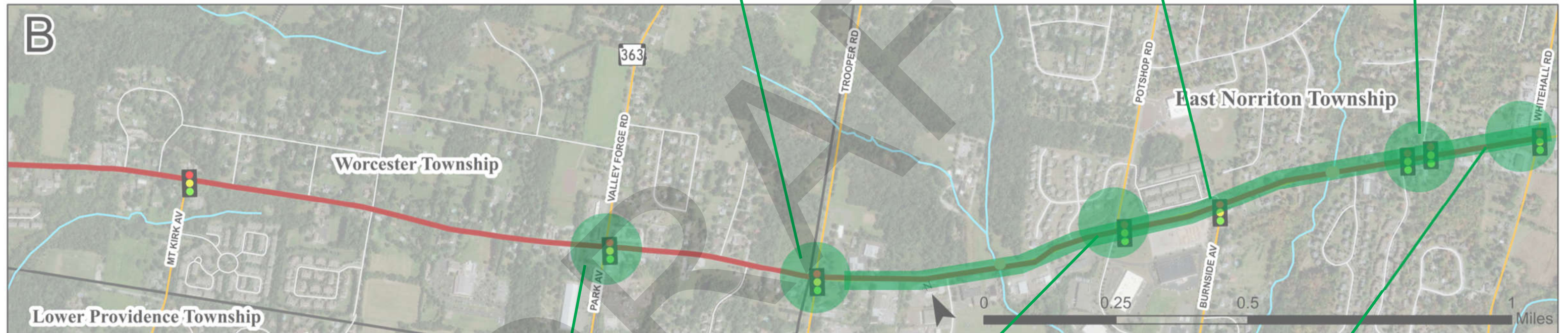


- Provide a 5-lane cross section
- Add bicycle and pedestrian facilities to fill in the gap between the existing facilities

Intersection with Sunset Avenue and Sandra Lane



- Provide a 5-lane cross section
- Traffic signal upgrades



Intersection with Valley Forge Road / Park Ave



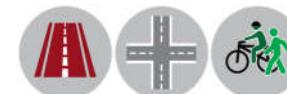
- Convert climbing lane to center left-turn lane
- Add turning lanes
- Traffic signal upgrades
- Add bicycle and pedestrian facilities

Intersection with Potshop Road and Change in Cross Section



- Provide a 5-lane cross section
- Traffic signal upgrades
- Add bicycle and pedestrian facilities

Intersection with Whitehall Road and Change in Cross Section



- Provide a 5-lane cross section on western leg
- Reduce number of driveways
- Traffic signal upgrades
- Add/upgrade pedestrian and bicycle facilities

Legend

- Germantown Pike
- Bridges
- 🚦 Traffic Signals
- Improvement Type**
- ⊕ Intersection
- 🛣️ Roadway
- 🚲 Pedestrian/Bicycle
- 🚗 Transit
- 🚗 Parking
- ⚠️ Maintenance



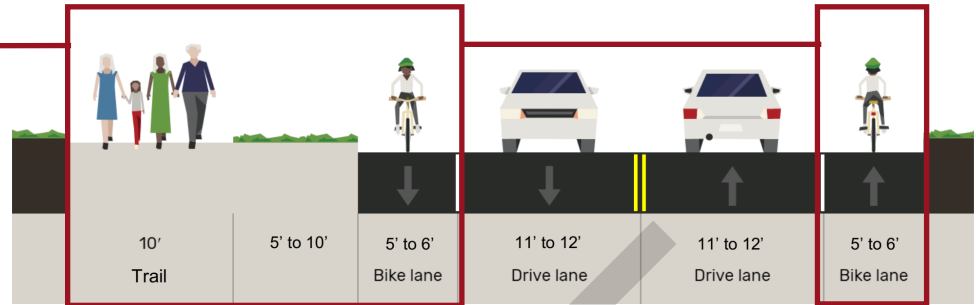
GERMANTOWN PIKE POTENTIAL FUTURE CROSS SECTIONS

Future typical cross sections have been prepared that address current deficiencies and serve the future needs of Germantown Pike. The cross sections consider the Montgomery County Complete Streets Policy, existing constraints, stakeholder/public input, and recommendations from previous planning studies.

Ridge Pike to Skippack Creek Road

Identified Improvements

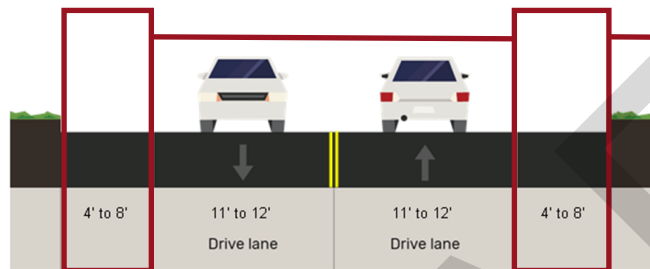
- Multi-use path or sidewalk on one side of the road
- Buffer / Verge area between sidewalk and travel lanes
- Bike lane on both sides of the road



Skippack Creek Road to PA 363 (Valley Forge Road)

Identified Improvements

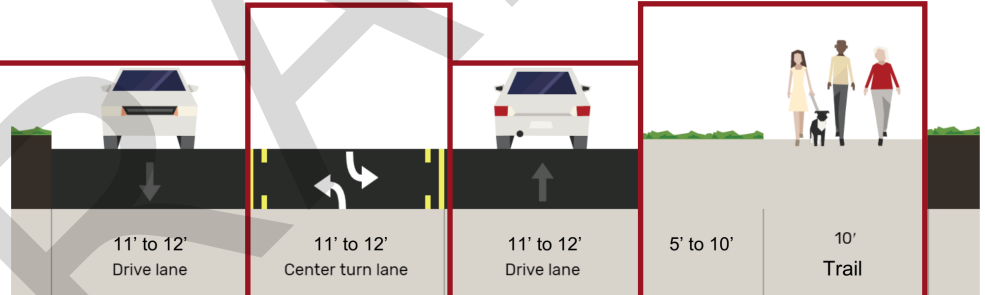
- Consistent shoulder width



PA 363 (Valley Forge Road) to Trooper Road

Identified Improvements

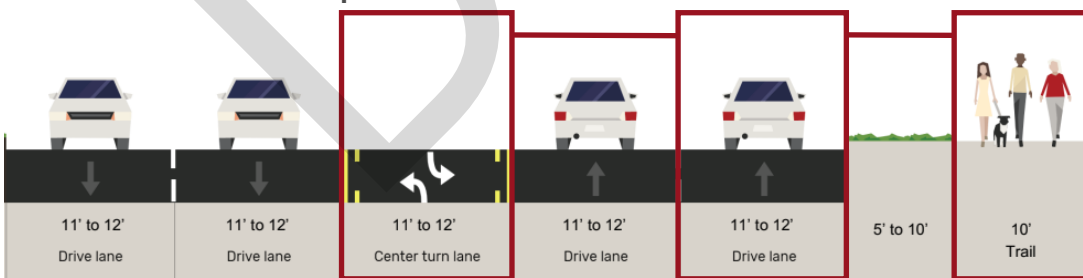
- Center left-turn lane
- Multi-use path or sidewalk on one side of the road
- Buffer / Verge area between sidewalk and travel lanes



Trooper Road to Whitehall Road

Identified Improvements

- Center left-turn lane
- Multi-use path or sidewalk on one side of the road
- Travel lane in each direction
- Buffer / Verge area between sidewalk and travel lanes



OPPORTUNITIES FOR INPUT

For questions about the project, please contact Matthew Popek, Montgomery County Planning Commission Transportation Planning Assistant Manager, at mpopek@montcopa.org.

For additional information visit: <https://www.montcopa.org/montcopikes>
Provide input at: <https://montcopikes.mindmixer.com/>