

# MONTCO PIKES | A VISION PLAN FOR SIX COUNTY CORRIDORS

## ABOUT MONTCO PIKES

Montgomery County owns 75 miles of roadways throughout the county. Many date to colonial times and began as private turnpikes. As part of the Montco Pikes project, the county is taking a closer look at six main corridors to ensure these roadways will support twenty-first century lifestyles. An overall vision has been established for the future of Easton Road, Butler Pike, Germantown Pike, Sumneytown Pike, Geryville Pike, and Swamp Pike.

This brochure highlights the vision and potential improvements for **Sumneytown Pike**.



## SUMNEYTOWN PIKE TODAY

This study focuses on two sections of Sumneytown Pike: From Bethlehem Pike to Royal Avenue in Lower Gwynedd & Upper Gwynedd Townships. This section is 2.7 miles long. The second section is from Broad Street to Forty Foot Road in Upper Gwynedd & Towamencin Townships. This section is 2.5 miles long. The roadway in between these sections is not owned by Montgomery County. Sumneytown Pike functions as an east-west oriented principal arterial and supports regional mobility. To the east Sumneytown Pike provides a connection to Spring House and access to PA 309 Corridor. To the west, Sumneytown Pike provides a connection to Kulpsville and the PA Turnpike—Northeast Extension (I-476) and the key growth area of Towamencin Township.

Functional Classification	Length	Daily Traffic Volume	Posted Speed Limit	Land Use Context
Principal Arterial	~ 5 Miles	17,900 - 22,000	35	Suburban/Commercial

## KEY ISSUES

**Safety & Congestion** — Several intersections have high crash densities. The lack of consistent roadway cross sections create bottlenecks. Several large developments along the corridor will create increase congestion.

**Walking & Biking** — Much of the corridor lacks basic facilities to support biking and walking — sidewalks, trails, and/or on-road bicycle facilities.

**Access Management** — Proposed development will increase the traffic along the corridor, requiring additional capacity.

**Drainage** — Poor drainage leads to water flooding on the roadway in several sections.



Location of Proposed Wawa at Forty Foot Road Intersection



Flooding Location over Haines-Dittingers Creek

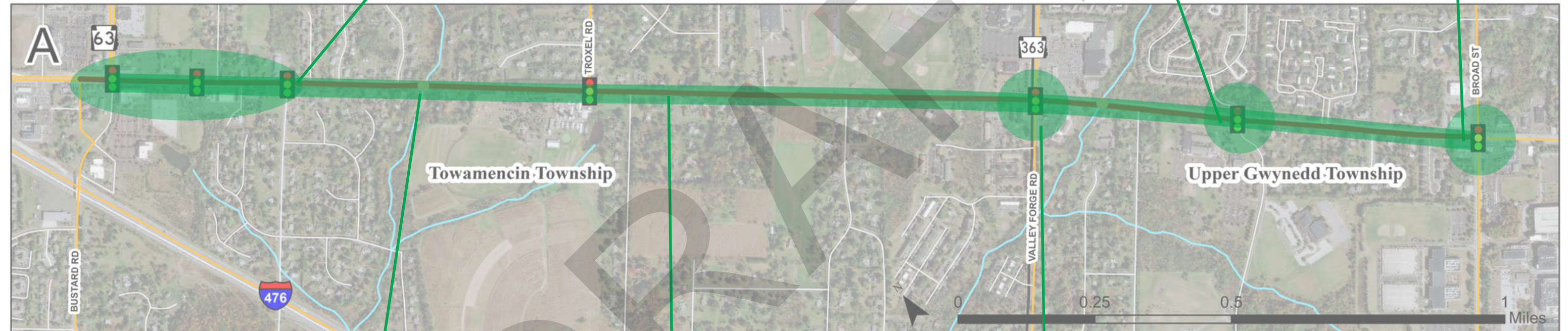
For additional information visit:  
<https://www.montcopa.org/montcopikes>  
 Provide input at: <https://montcopikes.mindmixer.com/>

# Sumneytown Pike | Corridor Improvements



## Corridor-Wide Improvement Strategies

- Add bicycle and pedestrian facilities and fill in the gaps between existing facilities
- Improve access management in commercial areas
- Upgrade storm water management facilities



### Forty Foot Road to Green Lane Road



- Traffic signal upgrades

### Intersection with Suplee Road



- Eliminate westbound lane drop

### Intersection with Broad Street



- Install sidewalk currently missing in northwest quadrant

### Crossing of Towamencin Creek



- Improve vertical geometry

### Between Forty Foot Road & Valley Forge Road



- Create consistent 5-lane cross section
- Upgrade pedestrian facilities

### Intersection with Valley Forge Road



- Install sidewalk currently missing in northwest quadrant
- Improve drainage facilities to reduce roadway flooding

### Legend

- Sumneytown Pike
- Bridges
- Traffic Signals

### Improvement Type

- Intersection
- Roadway
- Pedestrian/Bicycle
- Transit
- Parking
- Maintenance

# Sumneytown Pike | Corridor Improvements



## Corridor-Wide Improvement Strategies

- Add bicycle and pedestrian facilities and fill in the gaps between existing facilities
- Improve access management in commercial areas
- Upgrade storm water management facilities

### Intersection with Wellington Drive

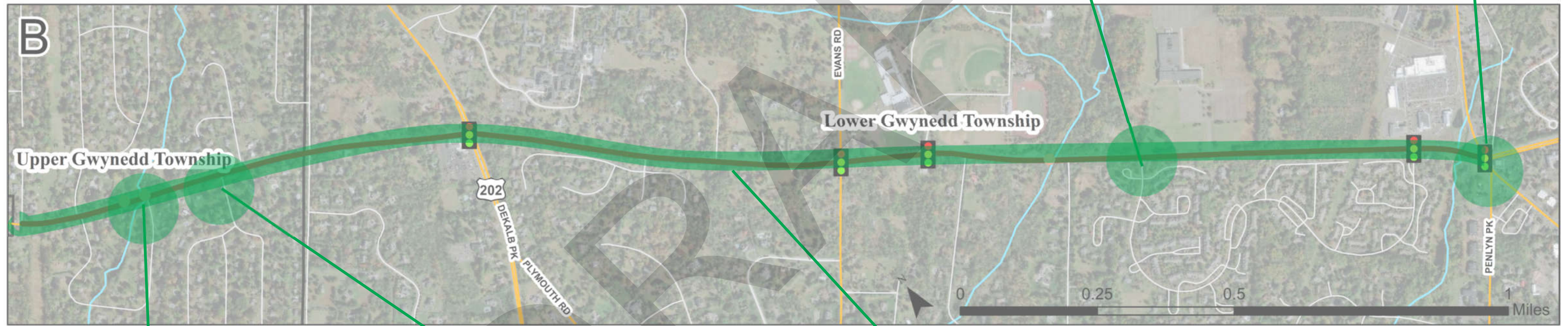


- Evaluate need for a traffic signal

### Intersection with Bethlehem Pike



- Traffic signal upgrades
- Local project funded for additional lanes on Sumneytown Pike and Norristown Road



### Crossing of Haines-Dittengers Creek



- Improve drainage facilities to reduce roadway flooding

### Intersection with Oakland Place



- Improve horizontal/vertical geometry

### Royal Avenue to Bethlehem Pike



- Create three lane typical section
- Upgrade pedestrian and bicycle facilities

### Legend

- Sumneytown Pike
- Bridges
- Traffic Signals

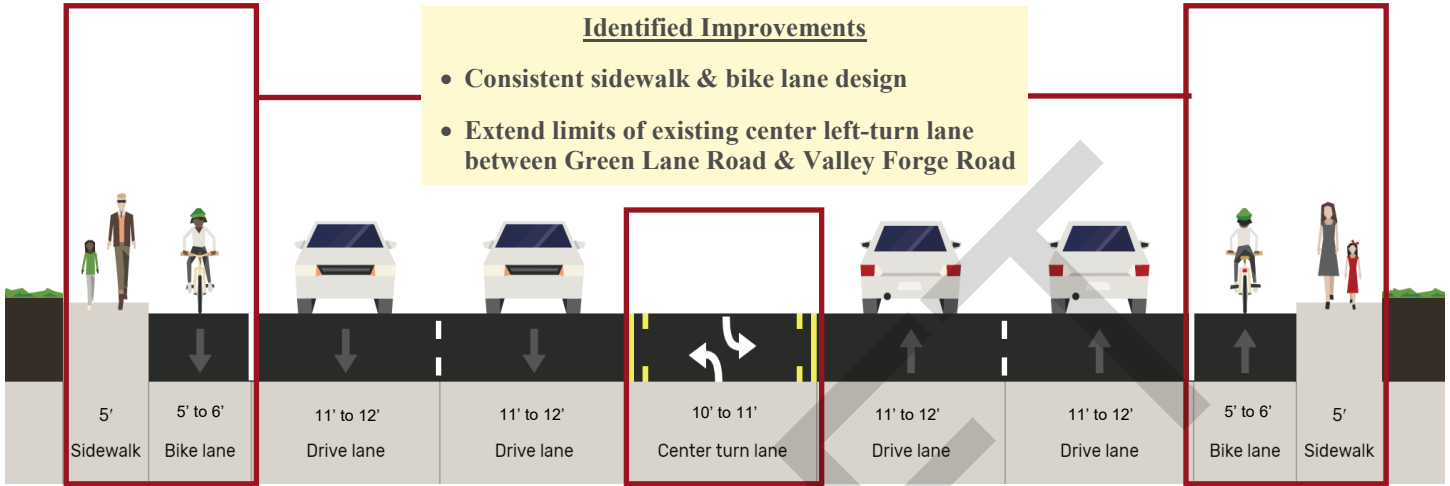
### Improvement Type

- Intersection
- Roadway
- Pedestrian/Bicycle
- Transit
- Parking
- Maintenance

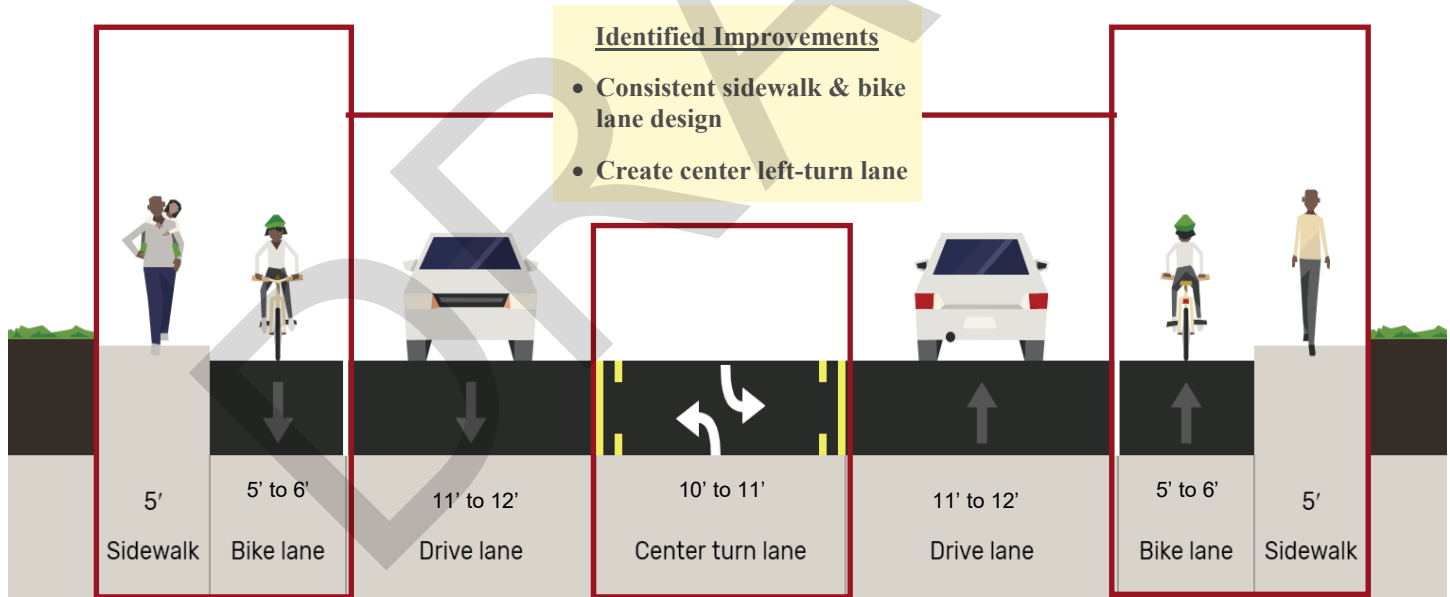
## SUMNEYTOWN PIKE POTENTIAL FUTURE CROSS SECTIONS

Future typical cross sections have been prepared that address current deficiencies and serve the future needs of Sumneytown Pike. The cross sections consider the Montgomery County Complete Streets Policy, existing constraints, stakeholder/public input, and recommendations from previous planning studies.

### Forty Foot Road to Broad Street



### Royal Avenue to Bethlehem Pike



## OPPORTUNITIES FOR INPUT

For questions about the project, please contact Matthew Popek, Montgomery County Planning Commission Transportation Planning Assistant Manager, at [mpopek@montcopa.org](mailto:mpopek@montcopa.org).

For additional information visit: <https://www.montcopa.org/montcopikes>  
Provide input at: <https://montcopikes.mindmixer.com/>