



Community Dialogue

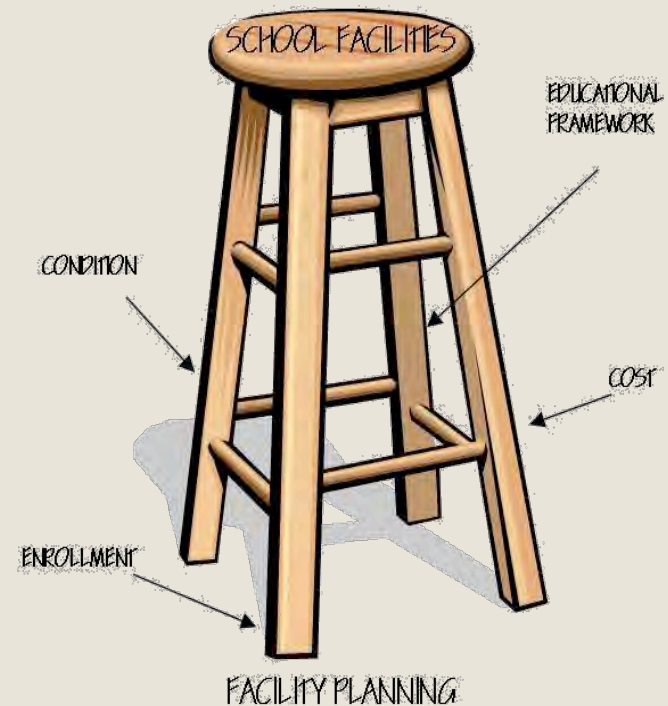
May 6, 7, 8, 2014



The Facilities Master Plan

► Facilities Master Plan ties Facilities to Strategic Plan & Student Assignment Plan

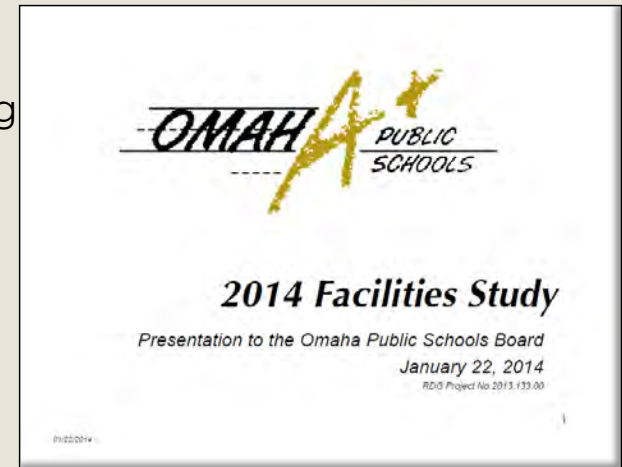
- Condition Assessments
- Enrollment vs. Capacity
- Cost to correct deficiencies & provide Equitable Facilities
- District-wide Planning Parameters



Conditions Assessment

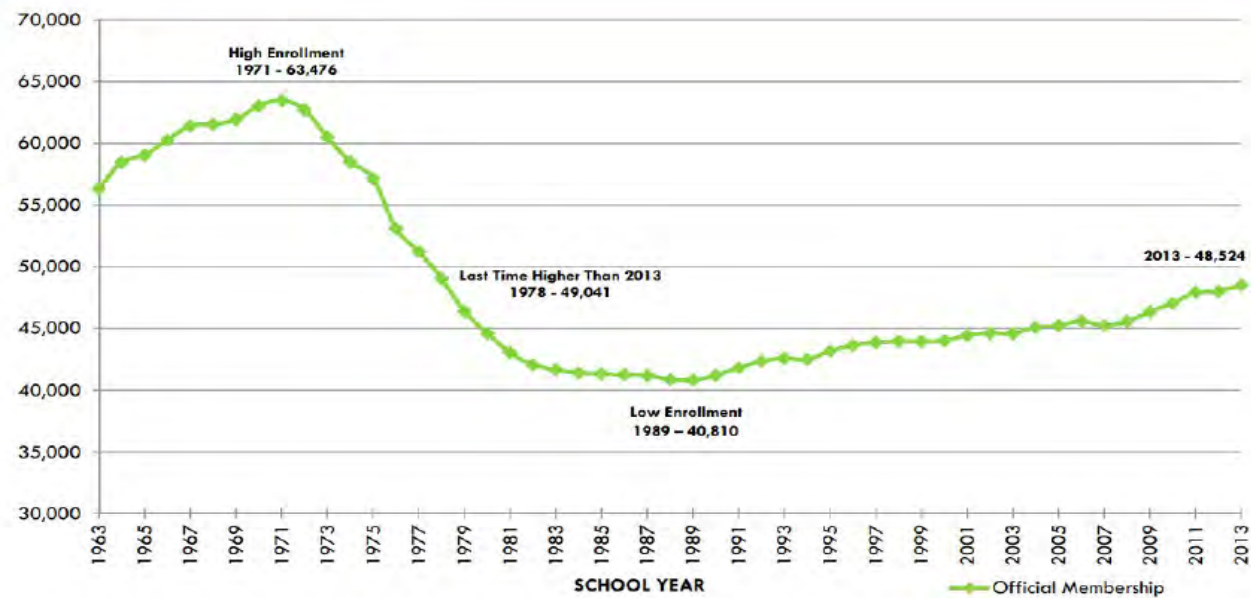
Completed by RDG Planning & Design

- ▶ Identified **\$650M** in **Facility Needs**
- ▶ Excluding **New Construction** and **Additions**
- ▶ Major Areas of Consideration
 - Site Paving Fencing, Playgrounds, Parking, and Lighting
 - Roofs, Walls, Windows, and Doors
 - Interior Finishes (Ceilings, Walls, Carpeting, Lockers)
 - Interior Spaces (Classrooms, Libraries, Gyms, Kitchens)
 - Heating and Air Conditioning
 - Electrical Supply and Lighting
 - Technology Cabling and Wireless Access
 - Safety and Security
 - Other (ADA, Environmental)



OPS Enrollment

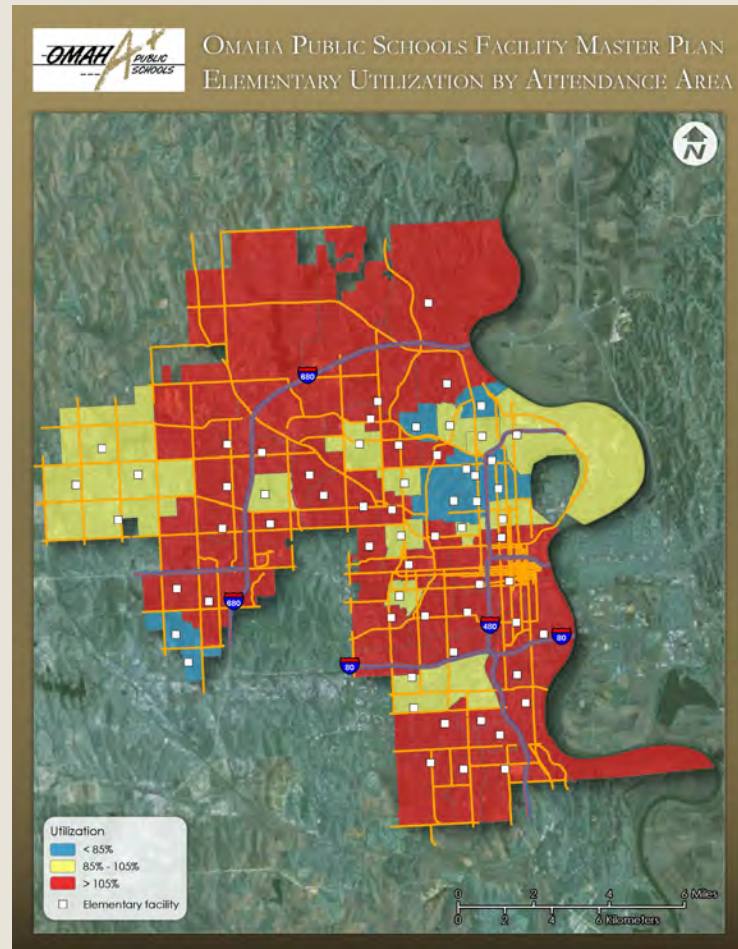
OFFICIAL MEMBERSHIP 50 YEAR HISTORY K-12



OPS Research Division

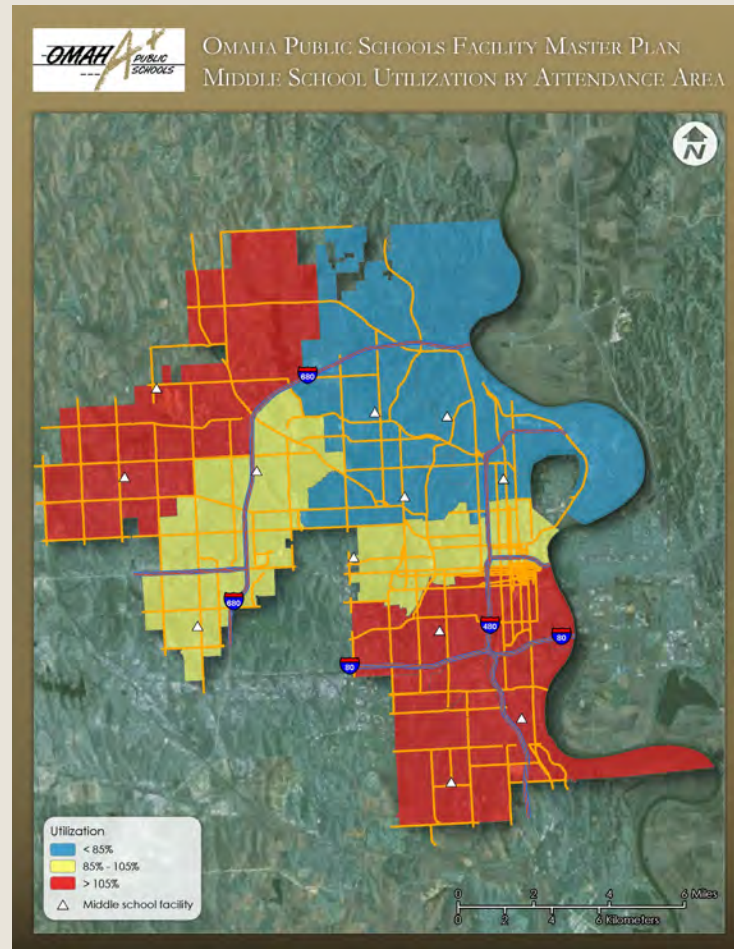
Current Elementary School Use (% Utilization)

- ▶ Green is within optimum Capacity
- ▶ Blue is Under Capacity
- ▶ Red is Over Capacity



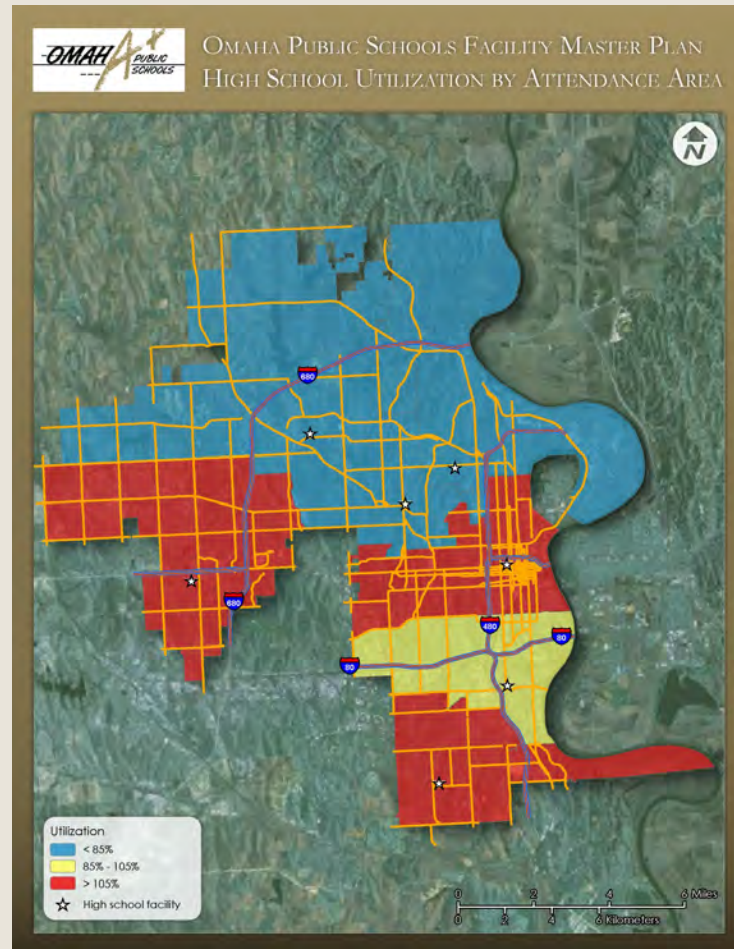
Current Middle School Use (% Utilization)

- ▶ Green is within optimum Capacity
- ▶ Blue is Under Capacity
- ▶ Red is Over Capacity



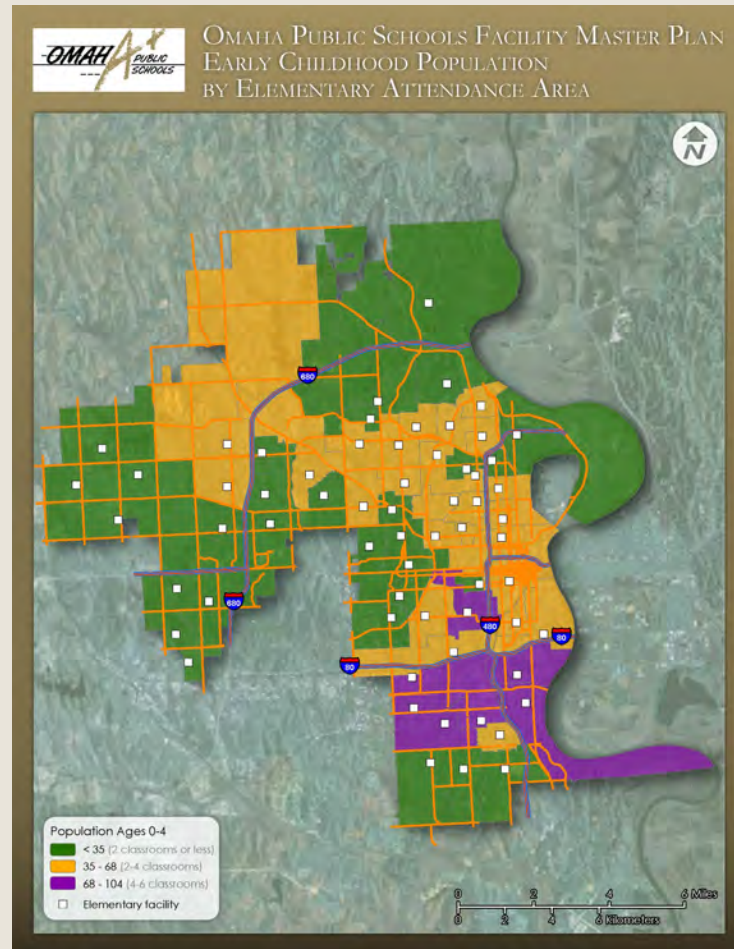
Current High School Use (% Utilization)

- ▶ Green is within optimum Capacity
- ▶ Blue is Under Capacity
- ▶ Red is Over Capacity



Projected Early Childhood Education Needs

- ▶ Green is 2 ECE Classrooms
- ▶ Yellow is 2-4 ECE Classrooms
- ▶ Purple is 4-6 ECE Classrooms



District-wide Planning Parameters and Considerations

- ▶ Planning **Horizon 2017/18** plus **4 years**
- ▶ **All schools safe** and **secure**
- ▶ **Early childhood education (ECE)** for all students
- ▶ **6-8 Middle School** configuration (EC-5)
- ▶ **Career and Technical Education (CTE)**
- ▶ **Neighborhood schools with choice**
- ▶ **Home Attendance Area** (EC – 12th Grade)
- ▶ **Choice** within the district and **OPTION** outside the district
- ▶ **Building and Site Constraints** (size, levels, stories, parking, access)

Facility Options Development

► Gathered Data

- Condition- Physical & Adequacy
- Enrollment & Capacity
- Academic Programs (magnet, ECE, focus)
- Attendance Boundaries

► Identified Facility Options

- All Viable Options
- Tested against current, projected and home attendance areas
- Considered prior renovations

► Determined Actions Required to Implement

- Capital Improvements
- Renovations
- Additions
- New Schools
- Combine/Repurpose
- Replacements

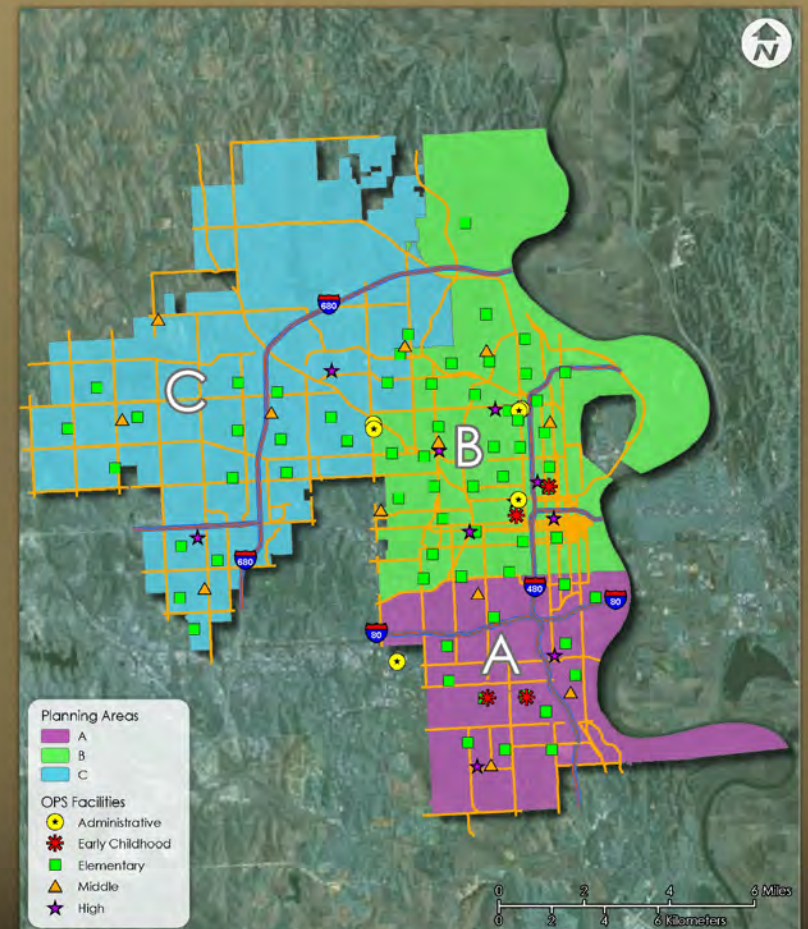


The Past the Future – Next Steps

- ▶ **Facilities Study** (Conditions Assessment)
Presented to Board **January 22, 2014**
- ▶ **Strategic Plan** approved **April 25, 2014**
- ▶ **Facilities Master Plan:**
 - Facility Assessment Validation (March 2014)
 - Facility Options Planning (March-April 2014)
 - Community Dialogues (May 2014)
 - Board Workshop (June 2014)
 - Implementation Planning (July-October 2014)

The Community Dialogue

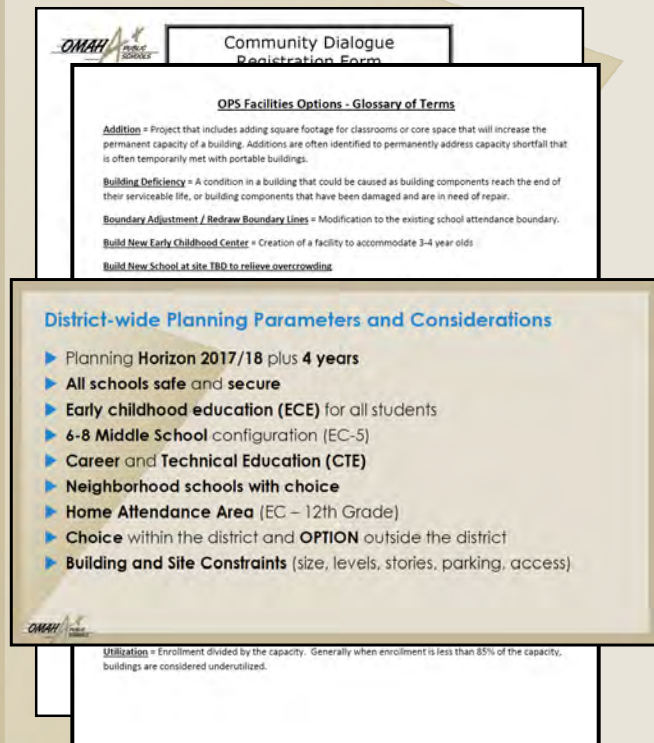
- ▶ **Three Dialogues** by **Planning Area**
- ▶ Organized by **High School Feeder**
 - Area A - Bryan & South
 - Area B - Benson, Central, & North
 - Area C - Burke & Northwest
- ▶ **Valuable Insight** on **Community Preferences**
- ▶ **Guide Recommendations** to be **Approved by the Board**



Tonight's Objective

- ▶ **Each Table** has a **Facilitator**
 - Introduce Yourselfs (5 Minutes)
 - Complete the Registration Form
- ▶ Individually **Read Options** and **Complete the Individual Questionnaire** (10 Minutes)
- ▶ As a Group, **Review Options** and **Complete the Group Questionnaire**
 - (1 Hour – Facilitator will budget your time)
 - 15 Minute Check Points
- ▶ **Facilitators Report Summary Results** (Last 15 Minutes)

Tools at Your Table



Community Dialogue Registration Form

OPS Facilities Options - Glossary of Terms

Addition = Project that includes adding square footage for classrooms or core space that will increase the permanent capacity of a building. Additions are often identified to permanently address capacity shortfall that is often temporarily met with portable buildings.

Building Deficiency = A condition in a building that could be caused as building components reach the end of their serviceable life, or building components that have been damaged and are in need of repair.

Boundary Adjustment / Redraw Boundary Lines = Modification to the existing school attendance boundary.

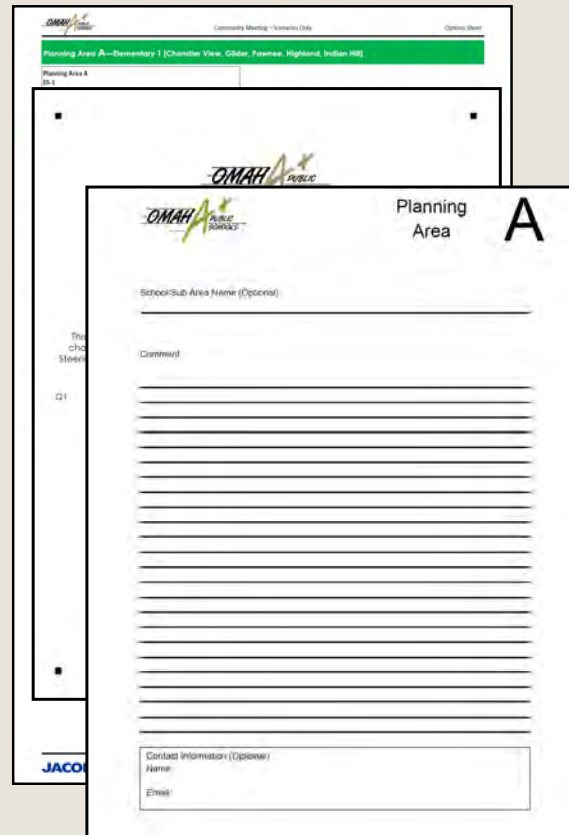
Build New Early Childhood Center = Creation of a facility to accommodate 3-4 year olds

Build New School at site TBD to relieve overcrowding

District-wide Planning Parameters and Considerations

- ▶ Planning Horizon 2017/18 plus 4 years
- ▶ All schools safe and secure
- ▶ Early childhood education (ECE) for all students
- ▶ 6-8 Middle School configuration (EC-5)
- ▶ Career and Technical Education (CTE)
- ▶ Neighborhood schools with choice
- ▶ Home Attendance Area (EC – 12th Grade)
- ▶ Choice within the district and **OPTION** outside the district
- ▶ Building and Site Constraints (size, levels, stories, parking, access)

Utilization = Enrollment divided by the capacity. Generally when enrollment is less than 85% of the capacity, buildings are considered underutilized.



Planning Area A

Community Meeting - Agenda/Date

Option Sheet

Planning Area A - Elementary 1 (Cherokee View, Glider, Fremont, Highland, Indian Hill)

Planning Area A

St. 4

OMAHA PUBLIC SCHOOLS

Planning Area A

School/Sub Area Name (Optional)

Comment

Area Schools

Sub Areas

2 to 3 Options

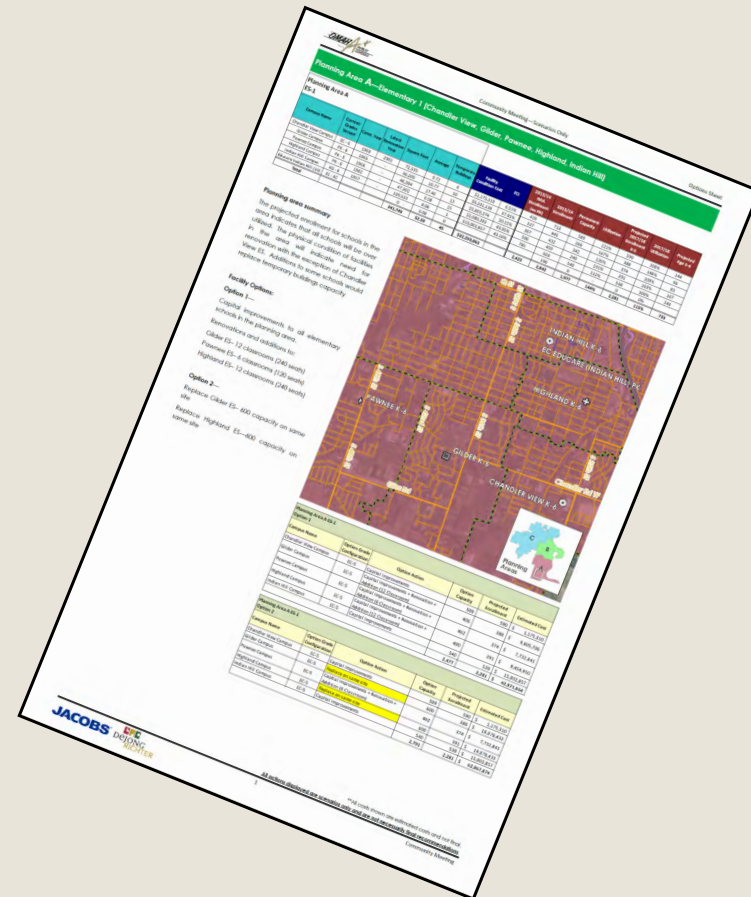
Contact Information (Optional)

Name

Email

- ▶ Registration Form
- ▶ Definitions
- ▶ Planning Parameters
- ▶ Options Sheets
 - Area Schools
 - Sub Areas
 - 2 to 3 Options
- ▶ Questionnaire
 - Individual
 - Group
- ▶ Comment Pads

Find The Option Sheets



How to Read the Options Sheet

Planning Area A—Elementary 1 [Chandler View, Gilder, Pawnee, Highland, Indian Hill]

Planning Area A

ES 1

Campus Name	Current Grades Served	Const. Year	Square Feet	Acreage	Temporary Buildings	Facility Condition Cost	FCI	2013/14 HAA Enrollment (no PK)	2013/14 Enrollment	Permanent Capacity	Utilization	Projected 2017/18 Enrollment K-5	2017/18 utilization	Projected Age 3-4
Chandler View Campus	EC - 6	1969	72,335	9.72	6	\$1,175,310	6.51%	428	713	589	121%	590	100%	144
Gilder Campus	PK - 6	1965	36,205	10.77	10	\$5,231,139	57.91%	337	445	266	167%	388	146%	96
Pawnee Campus	PK - 6	1966	46,384	17.46	13	\$5,803,374	50.15%	367	432	342	126%	374	109%	83
Highland Campus	PK - 6	1982	47,302	6.58	15	\$5,080,383	43.05%	506	459	240	191%	391	163%	167
Indian Hill Campus	KG - 6	1957	139,523	8.06	1	\$15,002,857	43.10%	785	603	540	112%	538	100%	243
Educare Indian Hill (10)	EC - EC		0	0.00	0				190	0	-	0	0%	
Total			341,749	52.59	45	\$32,293,063		2,423	2,842	1,977	144%	2,281	115%	733

Basic School Information

- Grade Configuration
- Age of School
- Area in Square Feet
- Site Area
- Number of Temporaries
- Facility Condition Cost and Index

Capacity Information

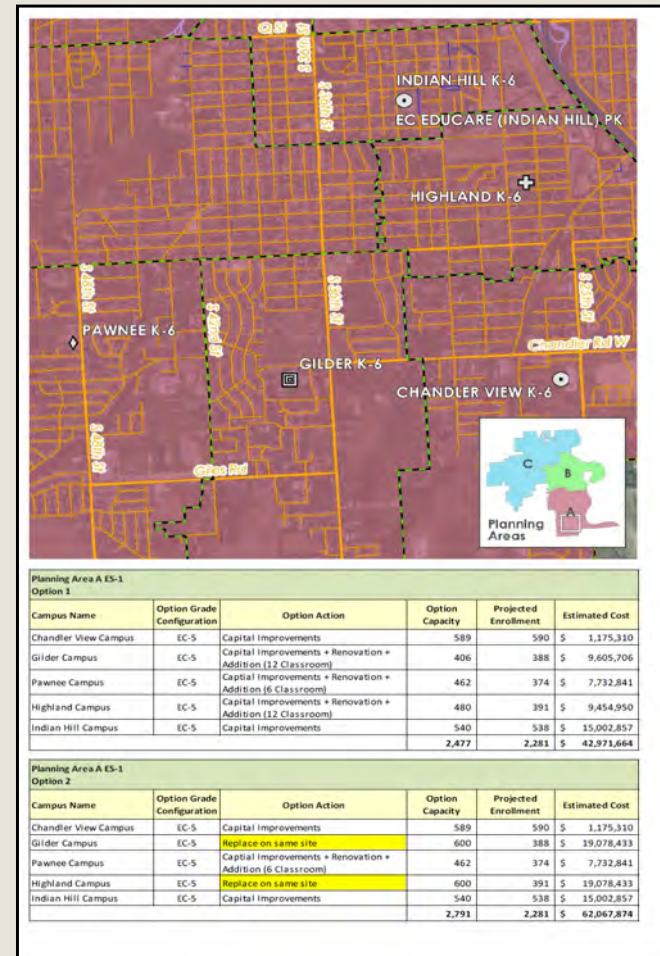
- Enrollment without and with PK
- Permanent Capacity and Utilization
- Projected Enrollment and Utilization
- Projected Early Childhood Students

Facility Options Description and Map

- ▶ **Planning Area Summary**
- ▶ **Descriptions of Options**
- ▶ **Two to Three Options by Sub Area**
- ▶ **Option** can Affect other **Sub Areas**
- ▶ **Chart of the Options**

- Proposed Grade Configuration
- Action Type for Each School
- Future Capacity
- Future Enrollment
- Preliminary Cost Estimate

- These estimates are preliminary and will change once the options is tested and all impacts are known



Summary of Tonight's Objectives

- ▶ **Each Table** has a **Facilitator**
 - Introduce Yourselfs (5 Minutes)
 - Complete the Registration Form
- ▶ Individually **Read Options** and **Complete the Individual Questionnaire** (10 Minutes)
 - **Area A Questionnaire and Options Packages Accessible Online Through May 11th. (Visit OPS Home Page for Web Link @ www.ops.org)**
- ▶ As a Group, **Review Options** and **Complete the Group Questionnaire**
 - (1 Hour – Facilitator will budget your time)
 - 15 Minute Check Points
- ▶ **Facilitators Report Summary Results** (Last 15 Minutes)

Ready, Set,GO!