

# BEVERLY AND SALEM CLIMATE ACTION & RESILIENCE PLAN



**THE CITIES OF BEVERLY AND SALEM HAVE PARTNERED TO CREATE RESILIENT TOGETHER: OUR PLAN TO TAKE COLLECTIVE ACTION IN THE FACE OF THE CLIMATE CRISIS.**

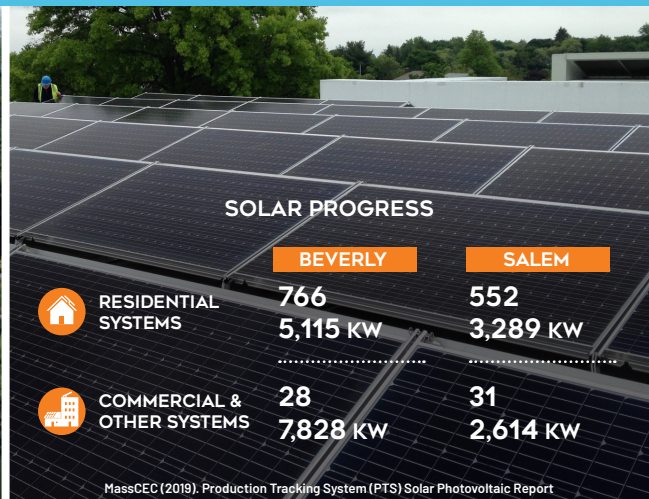
Along the North Shore, Beverly and Salem form a hub of history, culture, and economic activity. Linked by bridges and a shared rich heritage, Beverly and Salem are also connected by a collective vision for a resilient future in the face of climate change. We are embracing a proactive, collaborative approach as we develop a Climate Action and Resilience Plan that ensures we remain inclusive and thriving communities, attractive and accessible to diverse families and businesses.

BEVERLY AND SALEM ARE EXPERIENCING THE FOLLOWING CLIMATE IMPACTS:

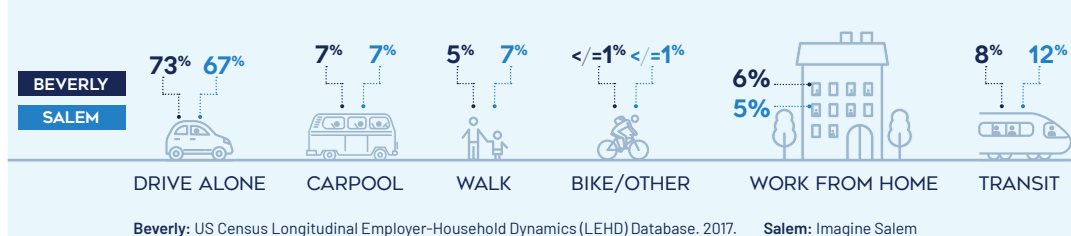


THEREFORE OUR CITIES ARE PARTNERING TO TAKE ACTION AND STRIVING TO EXCEED MASSACHUSETTS' COMMITMENT TO CARBON NEUTRALITY BY 2050.

## PROGRESS-TO-DATE



## HOW WE GET TO WORK



## GHG EMISSIONS (2018)



## THE RESILIENT TOGETHER CLIMATE ACTION PLAN WILL FOCUS ON:

Driving the transition to resilient and efficient buildings- new and existing- that are healthier and more affordable to own and operate.

Preparing our communities for emergencies while improving access to health care, wellness programs, and healthy foods.

Creating a safe, connected, and accessible multi-modal transportation system that prioritizes low-carbon mobility and promotes active lifestyles.

Enhancing stormwater management, wastewater treatment facilities, bridges and roads through green infrastructure and improved maintenance.

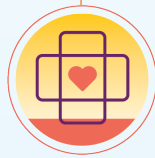


**BUILDINGS & DEVELOPMENT**

Preserving and enhancing the health of our local air quality, biodiversity, tree canopy, water quality, beaches, and shorelines, wildlife, and open spaces.



**NATURAL RESOURCES**



**PUBLIC HEALTH & SAFETY**



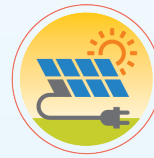
**SOLID WASTE**

Educating and delivering to the community effective reduction, reuse, recycling, and composting programs.



**MOBILITY**

Implementing policies and programs that foster the uptake of smart, reliable, clean energy generation and promote ongoing efficiency.



**ENERGY**



**INFRASTRUCTURE**

## GUIDING PRINCIPLES

The following six guiding principles help set the foundation for the goals and actions of this plan, as well as set the tone for what is important to the community.



**COMMUNITY RESILIENCE**



**ECONOMIC VITALITY**



**GHG EMISSIONS REDUCTIONS**



**RESTORATION & TRANSFORMATION**



**HEALTH**



**EQUITY**

## HOW WE'LL GET FROM HERE TO THERE

2020

2021

JUL

AUG

SEP

OCT

NOV

DEC

JAN

FEB

MAR

APR

MAY

JUN

COMMUNITY ENGAGEMENT

GHG INVENTORY, ASSESS BASELINE AND SET GOALS

IDENTIFY SUSTAINABILITY AND RESILIENCE ACTIONS

PRIORITIZE ACTIONS

DEVELOP IMPLEMENTATION STEPS

DEVELOP FINAL PLAN



JOIN US AT **RESILIENTTOGETHER.ORG**

THE PATH TO ENSURE A RESILIENT, HEALTHY FUTURE IS ONE WE WILL TAKE TOGETHER



**ENGAGE**  
WITH US  
ONLINE



**TALK**  
WITH FRIENDS  
& FAMILY



**SHARE**  
FEEDBACK  
WITH US