



PUBLIC HEALTH

THE CITIES OF
BEVERLY AND SALEM
HAVE PARTNERED TO
CREATE **RESILIENT
TOGETHER**: OUR
PLAN TO TAKE
COLLECTIVE ACTION
IN THE FACE OF THE
CLIMATE CRISIS.

Preparing our communities for emergencies while improving access to health care, wellness programs, and healthy foods.

WHAT DOES IT INCLUDE?

Overall quality of public health and well-being, particularly for vulnerable populations

Minimizing the impact of hazards such as flooding, storms, and extreme temperature

Equitable access to healthy local foods and wellness resources

HOW DOES IT CONTRIBUTE TO OUR LONG-TERM RESILIENCE AND SUSTAINABILITY?

1.

A stronger, healthier, and more inclusive and connected community can weather challenges together

2.

A more physically and mentally fit population will contribute to the Beverly/ Salem community

3.

Safer neighborhoods and city streets for all families help the community thrive



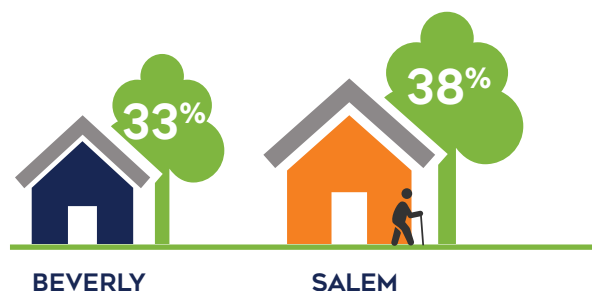


BEVERLY AND SALEM SUPPORT PUBLIC HEALTH AND SAFETY:



POPULATIONS LIKE THE ELDERLY AND INDIVIDUALS WITH RESPIRATORY AND OTHER HEALTH ISSUES ARE MORE VULNERABLE TO CLIMATE CHANGE IMPACTS LIKE EXTREME HEAT AND STORMS.

Seniors Over 65 Who Live Alone



THE NORTH SHORE- CAPE ANN EMERGENCY PREPAREDNESS COALITION

This coalition comprises the Health Departments and Boards of Health of 15 communities including Beverly and Salem. Established in 2004, the coalition shares resources and planning capacity to respond to public health threats and emergencies.

EMERGENCY PREPAREDNESS TRAININGS

MASS IN MOTION

Salem participates in a statewide movement that promotes opportunities for healthy eating and active living in the places people live, learn, work and play.

Some of the public health and safety strategies being considered for the Resilient Together plan include, but are not limited to:

- › Create established evacuation routes
- › Reduce structural barriers to mental health treatment
- › Pilot a "Resilient Neighborhoods" program, including "block captains" who help keep community members safe during and after an extreme event or disaster
- › Assess needs for elder care improvements and accessibility
- › Increase access to affordable healthy foods and affordable physical activity



DID YOU KNOW?



Both Beverly and Salem have Emergency Communication Systems to notify residents of emergencies or public health risks immediately, via text or phone call.



During a heat advisory or other extreme heat event, Beverly and Salem open cooling locations to provide residents with a safe place to cool down.



A **heat advisory** is an alert that local leaders issue to notify the public of dangerously hot temperatures. Beverly and Salem will see an increased number of extremely hot days in the summer with climate change.

LEARN MORE AND SHARE YOUR IDEAS AT
RESILIENT-TOGETHER.ORG