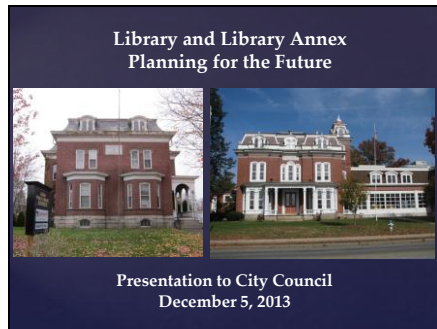
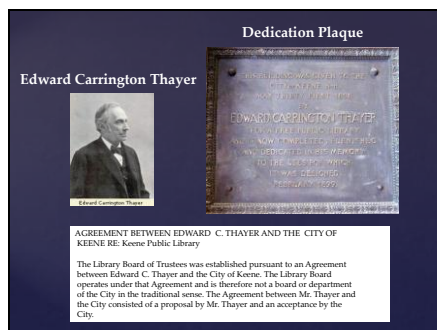


Library and Library Annex Planning for the Future

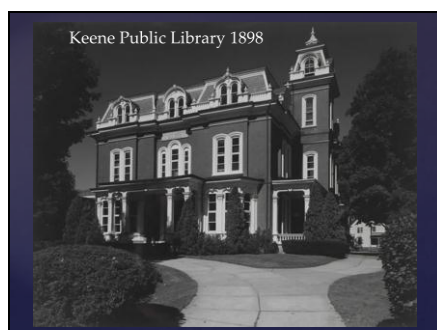


Thank you for providing this time to present plans of the Library. When implemented this will result in the most exciting and significant change in the Library since it opened over 100 years ago. The presentation will take about 1/2 hour. When we are done we will value your comments and questions.

I would like to introduce two eminent people. Jane Pitts is President of Friends of the Keene Public Library. Dan Scully is an architect from Scully Architects who has worked with us during the visioning process.



115 years ago, Edward Carrington Thayer purchased a home on West Street from Henry Colony and asked the City to partner with him to establish a library there for the citizens of Keene. This library would serve as an educational, cultural, and social center where citizens of all walks of life could come together and learn.



The library opened at this location in 1898,



and has had 5 renovations.

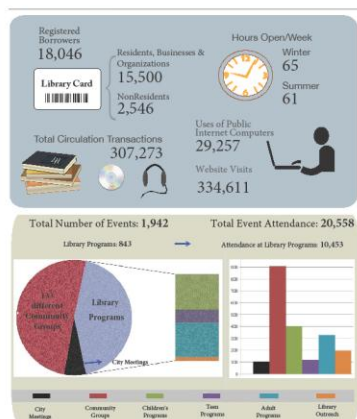


Each matched its services to the community's needs.

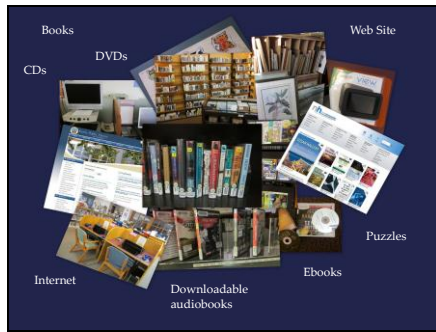


Mr. Thayer could hardly imagine that this library would someday see 4 thousand people a week come through its doors,

Keene Public Library from the 2012-2013 Annual Report



that nearly 2/3 of the Keene population would hold library cards,



and that his book- based library would expand into materials in a variety of formats and technologies allowing access to information worldwide.

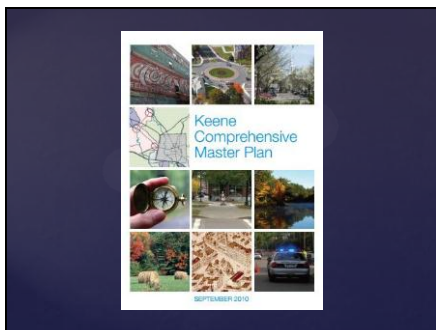


Although varying formats and emerging technologies alter the ways the library circulates materials and provides services,

LIBRARY MISSION STATEMENT

To provide free, open, and convenient access for all Keene residents to acquire information for growth in their personal knowledge; for life-long learning and enjoyment; for the fulfillment of informational needs, desires, and curiosities; and for enhancing quality of life in the community.

Mr. Thayer's basic vision of an educational, cultural, and social center where citizens of all walks of life could come together and learn rings true today and will, we believe, still ring true 100 years from now.



These values were reconfirmed in the City's 2010 Comprehensive Master Plan,

Community Based Education

We should ensure the continued availability of a wide range of formal and informal, community-based, adult-education programs and resources, to ensure that all adults have opportunities to maintain and enhance their skills. We should actively pursue ways to encourage disadvantaged groups to participate fully in learning activities. **Support of our library and its programs is integral to this strategy.** We should encourage courses in creative arts, domestic arts, crafts, languages, health and well-being, and personal growth.

which speaks to the importance of library programming,

Youth and Educational Opportunities

We should find creative ways to ready our young people for school and career placement by supporting the exploration of education and career opportunities, offering volunteer and internship opportunities that include skills development, and encouraging youth-development programs that increase academic and social competence. Doing so may help us retain young adults as local professionals after they graduate from high school and college.

and life-long learning opportunities, essential to the community's ability to keep informed and involved in today's world. These are key components of a sustainable community.

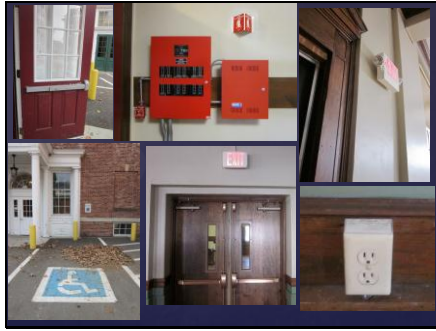


AGREEMENT AMONG THE TRUSTEES OF THE KEENE PUBLIC LIBRARY
THE FRIENDS OF THE KEENE PUBLIC LIBRARY, AND
THE CITY OF KEENE, NEW HAMPSHIRE

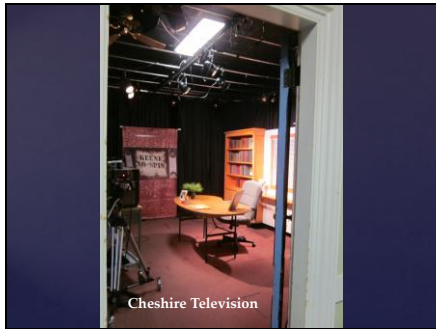
Ten years ago, the Trustees using Trust funds, and the Friends, using a bequest from the estate of Katherine Heberton, purchased the property next to the library from the Masons, in part because of the need for additional public parking near the newly renovated library, and in part to provide space for growth beyond the 20 year program that was addressed in the last renovation. Built as a private residence by Henry Pond in 1859, the building had been conveyed to the Masons in 1918.



The Trustees and Friends donated the building, now known as the Library Annex, to the City.



Friends funds were used to bring the first floor of the building up to basic code requirements, and to provide disabled access.



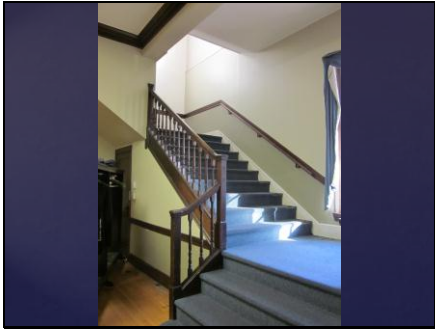
The Annex now houses Cheshire TV



and Heberton Hall, named after Katherine, which is used for library, city, and community programming.



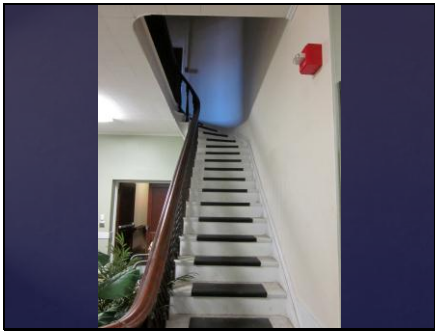
The rest of facility is not code compliant,



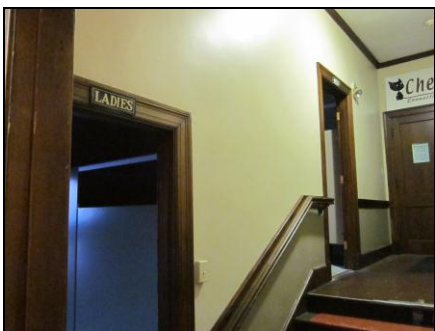
and cannot be occupied



until renovated.



Basic needs are fire safe stairs,



an elevator for disabled access,



sprinkling for fire protection, and air conditioning,



as well as general maintenance of the building envelope—



repairs to the windows, roof, & bricks.



Many renovations are needed to fully utilize the Library Annex.

Kitchen



It is important to be sure that these changes

2nd Floor Large Assembly Room



support community needs now and in the future.

To ensure funding is well spent, two questions are being asked:

- How can these two buildings be best used to provide library services that meet our community's 21st century needs?

To ensure funding is well spent, two questions are being asked:

- How can these two buildings be best used to provide library services that meet our community's 21st century needs?

And, can the two buildings be physically connected?

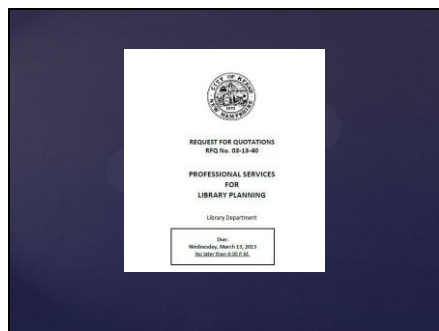


- And, can and should the two buildings be physically connected, enabling services to flow between the two buildings, providing the flexibility needed to adapt as future technologies and services evolve? Can the connection also provide disabled and pedestrian access to the building from West Street, allowing for closer access to future parking?



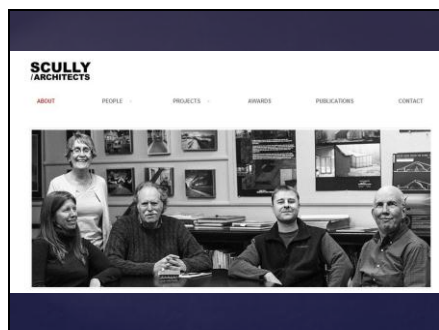
A committee made up of Trustees, Friends, and library staff was formed to develop a process for answering these questions.

I'd like to introduce Jane Pitts, President of the Friends of the Library, who will talk about the committee's progress to date.



JANE

A Request for Quotations for Professional Services was issued through the City Purchasing Department in March, 2013,



and Scully Architects was hired to help us with a visioning process.

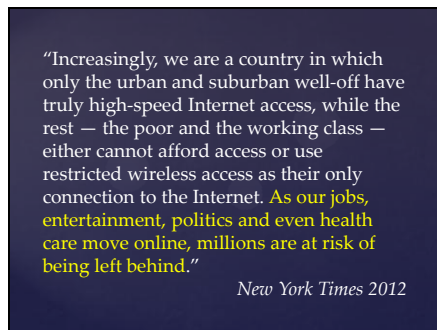


In addition, the committee looked at national library trends and at what futurists were predicting.

Here's what we found:



Free and universal access to both digital and print materials remained a valued necessity.



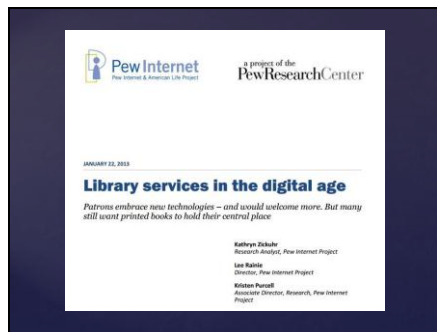
As our jobs, entertainment, politics and even health care move online, millions are at risk of being left behind without access to high speed Internet.



Making the most of digital technology and creative media

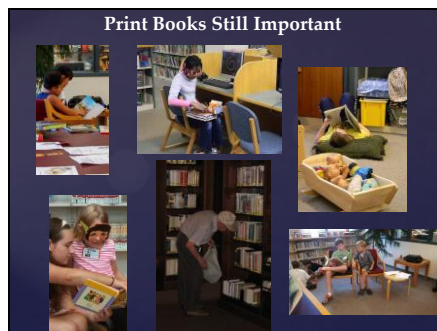


and positioning the library as a social hub for information exchange in the community were predominant priorities.



The Pew Research Center is a nonpartisan fact tank that informs the public about the issues, attitudes and trends shaping America and the world.

Their 2013 Report on Library Services in the Digital Age found that Americans would embrace new technologies but wanted to retain traditional library services.



Despite the trend towards digitalization, the PEW report statistics still strongly suggest that although patrons are eager to see their library's technological services expand, they also feel that print books remain important. 90% of Americans say that libraries are important to their communities and 80% of Americans still say borrowing books is a "very important" service to provide.



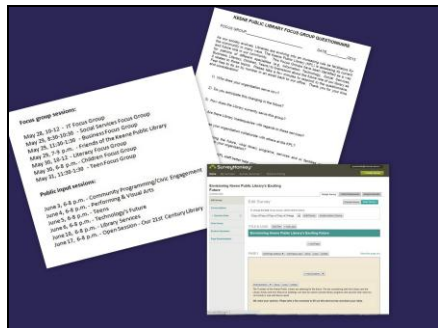
The challenge then becomes how to marry the virtual library with the physical? As our digital age becomes increasingly interwoven with our written one, our library must strive to maintain a superb print collection, embrace new technological changes, and position itself for the future.

Futurists say that when designing a library for the 21st century, the most important consideration is to design a building that is both **resilient and sustainable** and which **allows for the flexibility to adapt**.

Futurists say that when designing a library for the 21st century, the most important consideration is to design a building that is both resilient and sustainable and which allows for the flexibility to adapt.

What did the Keene public want?

Now, on to the most exciting part. What did the Keene public want?



We held a total of 13 visioning sessions and focus groups and conducted an online survey about the future of the library. Community leaders and technology experts were invited to our focus groups. We listened to business people and parents, teenagers and seniors, students and educators, hearing from nearly 200 people.

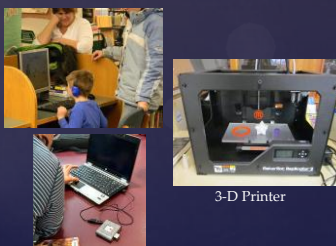
More space for teens



Here's what community members told us they needed during the visioning sessions.

More space for teens— for their collections, for programming and activities, and for access to technology.

Technology center



A technology center where people could go to use the latest technologies.

These might not be available to them elsewhere, limiting their ability to access information and resources important to function in today's digital based world.



Learning labs and production/broadcast spaces, where people of all ages could learn, create and produce. Increasingly, literacy is coming to mean being able to understand, create and produce in a variety of visual and digital media.



More space to collaborate with others – to work together on projects, tutor, experience a webinar, or teleconference.



More open and welcoming places to sit and relax, with a place to eat and drink.



A more developed outdoor area for programming & relaxation.

Book Sale space



A better space to hold our Book Sale.

Community arts space



And space to showcase community arts and events.

This is all possible!

Project Goals

Based on the visioning process, the committee developed the following project goals.

1. Design a connection between the two buildings that honors the historical significance of the original buildings and provides pedestrian and disabled access to both facilities from West Street as well as Winter Street.

This access will be important as future parking is developed across West Street.

2. Build an infrastructure that is code compliant and that will be flexible enough to accommodate emerging technologies.
3. Incorporate solar and other green technologies when possible.

4. Provide a better location and better access to the Friends' book sorting and book sale areas.

5. Provide the additional public spaces that we heard about during the Visioning Process:

- More space for teens
- Technology center
- Learning labs
- Collaborative space
- Welcoming spaces
- Outdoor area
- Book sale space
- Community arts space

1. Design a connection between the two buildings that honors the historical significance of the original buildings and provides pedestrian and disabled access to both facilities from West Street as well as Winter Street. This access will be important as future parking is developed across West Street.

2. Build an infrastructure that is code compliant and that will be flexible enough to accommodate emerging technologies.

3. Incorporate solar and other green technologies when possible.

4. Provide a better location and better access to the Friends' book sorting and book sale areas.

5. Provide the spaces that we heard about during the visioning process.

I next want to introduce Dan Scully, who will tell you that this is possible and will show you the concepts that have been developed.

DAN:

1st let me clarify: This visioning process as just outlined by Jane, is simply that: a visioning process resulting in a Program of Spaces appropriate to meet the anticipated evolutionary needs of our public library into the future.

Yes, we went one step further and developed a plan for how those spaces might be distributed between the Main Library and the adjacent Annex to create one library complex. I need to stress this is preliminary, very preliminary, though it does show that realistically the goals of the library growth can in fact be accommodated in the two existing buildings when a link is created to connect them.



1st FLOOR PLAN

Orientation: Left is the Library Annex; right is the main library. Yellow is unaltered spaces; green is renovations; blue is new construction.

Each of the two separate buildings is of an architectural character very evocative of Keene's history.

In addition to the program spaces as previously outlined, there are other dynamics to be considered relative to the site context. The most significant is the ongoing effort to find parking to serve the Library.

The proposed Concept for the future library essentially considers the main library to remain the Main Collection and Resource Center; the Annex building to be a place for more public Expression and Production - facilitating the increasingly modern use of articulation by more than the written word. A Link between the two buildings needs to treat these buildings as one, as equals, to no longer be called an Annex.

The proposed plan for the new first floor calls for a Connector between the two buildings that is a public gathering space, maybe the most social space in the library.

In addition to meeting the public gathering needs of the library, this connector becomes a south side pedestrian accessible entry off West St and any future possible parking to the south side of West St. We anticipate the

existing Winter Street entry will remain as the primary entry.

With a terrace to the south, and potentially a new courtyard between Heberton Hall and the Library, there could be two relaxed courtyard areas for outdoor reading and gathering.

With a modest renovation of the existing circulation desk, and removal of one room, the circulation desk would have the required visual access to the north and south entries.

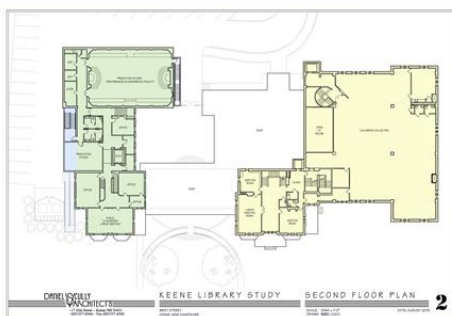
This addition would step back from the front of the adjacent buildings, to let them stand out.

With the addition of a central elevator in the Annex building, access becomes possible to the two levels of the main floor, the 2nd floor, and the renovated basement.

A west side fire stairway accesses all floors and the basement as well.

In this proposal, the front rooms become the modest sized Meeting Rooms and the Learning Lab that are required from the Programming study. A revised Kitchen and toilet facilities are centrally located and can serve either Heberton Hall or the Connector area.

We have identified numerous Teen Spaces in both buildings, providing various programs for the Teens.

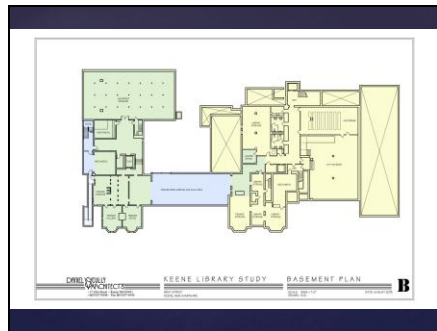


2nd FLOOR PLAN

With the new stairs and an elevator, the 2nd floor of the Annex can become available to the Library needs. We can now look at the possibilities here.

Like the 1st floor, the front of the 2nd floor is also a series of modestly sized rooms that serve our new needs well, and back portion is the great former Masonic Hall in all its glory.

Cheshire TV currently utilizes the front portions of both the 1st and 2nd floors of the Annex building. If they choose to remain in the building, the new plan provides for their needs as well as similar KPL needs on the 2nd floor. The former Masonic Hall could become a Production Facility/small Performance Theater/High – Tech Conference Room with a schedule allowing utilization by both the Library patrons and Cheshire TV.



BASEMENT PLAN/ FRIENDS BOOKSALE AREA

The basement under the Connector becomes an excellent permanent location for the Friends' book sorting, storage and selling area without the hassle of periodic reset up and down.



THE CONNECTOR INTERIOR

This is an initial concept of what the one story connector could be. With glass walls on the north and south, we envision this space as a bright open space between the two very visually active and enclosing historic buildings on each side. It is a social gathering place, perhaps to eat, as well as a way to get from one part of the library to the other.

The plan allows good flow between the two structures. It also provides the ability to close off one building while the other is in use if required, say for a night time activity.

FLEXIBILITY & THE FUTURE

The one thing known about planning for the future is the need to be flexible, to be wired, and to be wireless to meet the requirements of the latest technologies. This layout is a connector, a bridge if you will, between the traditional notion of a Library as collections and resources and the emerging community and active learning requirements of the library of the future to sustain this community into the future.

And now, back to Paul.

PAUL

As envisioned now, the library would remain the main resource center housing materials and access to materials in all forms and the library annex will house an active learning and community engagement environment. This will be the most exciting and significant change our library has ever experienced.

As envisioned now, the library would remain the **main resource center** housing materials and access to materials in all forms and the library annex will house an **active learning and community engagement environment**.

Next step:

Hire an architect for schematic design

Now, working again with the City, we will embark on the next step, which will be to issue a Request for Statement of Qualifications for schematic design.

Review Committee

Sally Miller – Chair, Library Trustee
Paul Henkel – President, Library Trustees
Ken Jue – Library Trustee
Judy Noonan – Library Trustee
Judy Putnam – Library Trustee

Jane Pitts – President, Friends of the KPL
Jill Cielinski – Friend
Paul Ledell – Friend

Beth Truman – Community Member

Nancy Vincent – Library Director
Jennifer Bone – Assistant Library Director

Medard Kopczynski – Assistant City Manager

The Library Annex Advisory Committee will serve as the review committee.

Funding for Schematic Design has been secured, thanks to:

- Friends of the Library
- The Putnam Foundation
- Heberton Cost Center

Funding for schematic design phase will be paid for using a combination of a donation from the Friends of the Library, a grant from the Putnam Foundation, and money from the City Heberton Hall cost center which uses the Hall's rental income for improvements to the Library Annex.

Schematic Design Process

- structural studies
- building and fire code analysis
- major systems and materials selection
- architectural elevations
- interior plans of the buildings
- estimate of cost

We project that the schematic design phase will include:

- structural studies and evaluation
- building and fire code analysis
- major systems and materials selection
- development of architectural elevations
- interior plans of the buildings
- estimate of cost

Times change over the years and we must change with them.

Partner with:

- Trustees
- Friends
- Library patrons

Times change over the years and we must change with them. We are here tonight to again ask the City of Keene, as Mr. Thayer did, to partner with the Trustees, the Friends of the Keene Public Library, and thousands of library patrons, to provide a library for the future.

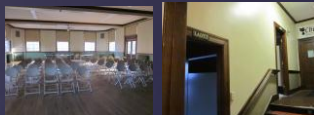
Funding



City + Trustees + Friends + Community

In terms of funding, it is our hope to fund the project with a partnership with the City, Trustees, Friends, and the Community. With schematic design plans in hand, we will be launching a fund raising drive as well as seeking tax credits and grants.

Infrastructure Improvements



We will be asking the City for continued funding through its CIP process for necessary infrastructure improvements to bring the building into code compliance.

Why now?

- The City has owned the Library Annex since 2003 and while some internal upgrades have been made with Friends and City expenditures, more are needed.

Why now?

1. The City has owned the Library Annex since 2003 and while some internal upgrades have been made with Friends and City expenditures, more are needed.

- **Additional** external and internal work must be done to keep the building from deteriorating and to bring the whole building into code compliance.

2. Additional external and internal work must be done to keep the building from deteriorating and to bring the whole building into code compliance.

- To be **cost effective and to maximize City resources**, the repairs and upgrades should support the community's library needs now and in the future.

3. To be cost effective and to maximize City resources, the repairs and upgrades should support the community's library needs now and in the future.

- We are living in a **fast-paced society**. Technology brings us new changes almost daily. How are we going to keep up?

4. We are living in a fast-paced society. Technology brings us new changes almost daily. How are we going to keep up?

- A **connection** linking the buildings would provide pedestrian and disabled access from the West Street side of the building.

This is important as this aligns to future city parking plans.

5. A connection linking the buildings would provide pedestrian and disabled access from the West Street side of the building. This is important as this aligns to future city parking plans.

- A connection would also allow for the internal **flexibility** that futurists stress is essential in providing for future library service needs.

6. A connection would also allow for the internal flexibility that futurists stress is essential in providing for future library service needs.

With the **city support for necessary infrastructure improvements**,

and the Trustees and Friends ready to launch a **fundraising drive for expansion and renovation**,

the Keene Public Library will be ready to meet our community's 21st Century library needs.

With the city support for necessary infrastructure improvements, and the Trustees and Friends ready to launch a fundraising drive for expansion and renovation, the Keene Public Library will be ready to meet our community's 21st Century library needs.

There's no time like the present to plan for the future.



There's no time like the present to plan for the future.

For more information, contact:

Paul Henkel (603) 352-4547 phenkel@ne.rr.com

Jane Pitts ljpitts@ne.rr.com