

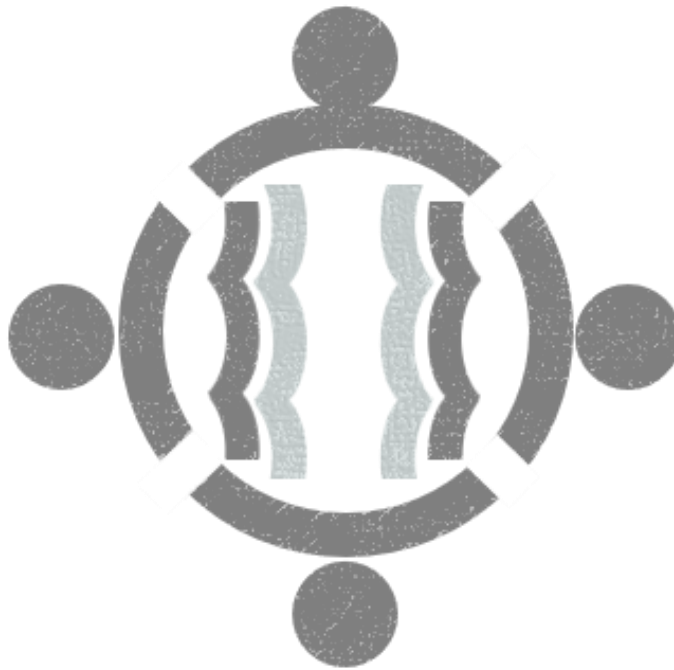
LAND BETWEEN THE LAKES

COMMUNITY VISIONING SESSION

KENLAKE STATE RESORT PARK

TUESDAY, DECEMBER 11, 2018

6:00 PM – 8:00 PM



Welcome and thank you for being here!

Table 1

Larry Armstong	TN Wildlife Resource Agency
Aviva Yasgur	Land Between the Lakes Association - Executive Director
Melissa Parker	Stewart County Schools - Resource Coordinator
Jackie Gough	Wood N Wave - Business Owner
Matt Helt	Forest Service

Table 2

Wade White	Lyon County Judge Executive
Joseph Baust	Retired Environmental Education Professor
Matt Falwell	Gear Up Cycles - Business Owner
Lindsay Gardner	TN Wildlife Federation
David Miller	Lake Barkley State Resort Park - Park Manager
Charles Tyree	Energy Lake Resident Attendant
Cameron Cooper	Murray State Student, Nature Station Volunteer
Richard Lomax	Forest Service

Table 3

Paula Flood	Trigg County EMS, Former Resident
Wendy Watters	Hillman Ferry Camper
Bill Fields	Ft Donelson National Battlefield – Chief Ranger
Dee Pak Patel	Cadiz-Trigg County Tourist and Convention Commission
Garrett Thompson	Back Country Hunters and Anglers
Melodie Swope	Homeschool Family
Darrin Samborski	Forest Service

Table 4

Robin Brandon	Stewart County Mayor
Julie Warner	Turkey Bay OHV user
Shannon Crutcher	Former Resident
Arrianne Byrum	Nature Station, Public Programs Coordinator
Jamey Thweatt	Forest Service

Table 5

David Nickell	Between the Rivers Inc.
David Westerfield	Land Between the Lakes Regional Water Trails
Betsy Allison	Henry County Schools - Curriculum Supervisor
Ski Witzofsky	Historian, Former TVA Employee
Nick Edmonds	Lake Barkley State Resort Park - Recreation Manager
Steve Bloemer	Forest Service

Table 6

Jim Wallace	Former Resident, Former School Superintendent
Tony Black	KY Department of Fish and Wildlife Resources
Sharlene Baggett	Piney Camper, Facility Maintenance Contractor
Ginny Grulke	LBL Advisory Board, Equestrian Rider
Denise Schmittou	Former employee
Dick Cook	Volunteer, Hiker
Sharon Crutcher	Former Resident Family
Kyle Varel	Forest Service

Table 7

Don Bailey	Stewart County Chamber of Commerce - Director
Darrie Parker	Trigg County Saddle Club - Vice President
Kevin Murphy	LBL Sportsmans Club
Sonny Warner	Turkey Bay OHV user
Jan Gray	Former Resident, Nature Station Volunteer
Brittany Meredith-Miller	Paxton Media Group
Birdie Garrity	Land Between the Lakes Association - Volunteer Coordinator
Chad Ingle	Forest Service

SHEET 1

BACKGROUND & GUIDING IDEAS

BACKGROUND

In everything we do, we are passionate about connecting people to the outdoors. Why? Because there are many important economic and human health benefits from spending time in nature. Responsible management of healthy ecosystems can improve quality of life by:

- providing fun places for outdoor recreation and exercise,
- providing peaceful and serene settings for spiritual renewal and mental health,
- providing environmental education and opportunities for development of life-long skills,
- providing quality habitats for hunting and fishing,
- connecting children to the natural environment and ecological processes,
- promoting closeness amongst family and friends,
- inspiring wonder, respect and awe of the natural world,
- instilling pride in our heritage, and
- contributing to the economic vitality of local communities through tourism-related businesses and jobs.

Now more than ever, sustainability is integral to this pursuit. Loss of native grasslands, forest fragmentation, invasive species, mounting financial demands, the condition of our recreation and heritage assets, and demographic shifts and lifestyle changes are just a few of the challenges to maintaining quality recreation and environmental education opportunities.

That is why Land Between the Lakes is embarking to develop a Strategic Sustainability Plan to move us **Forward to the Future**. The Strategic Sustainability Plan is a long-range plan aimed at achieving sustainability goals which align to Land Between the Lake's overall business strategy for outdoor recreation and environmental education. This effort has three overarching goals:



1. To develop a citizen-informed, sustainability-based vision that will guide Land Between the Lake's recreation and environmental education program priorities for the next 10-15 years;



2. To identify sustainability strategies which will position Land Between the Lakes to be environmentally, socially and economically supportable in the long term; and



3. To align Land Between the Lake's practices with broader initiatives that support local communities and cultivate regional sustainability through collaborative actions.

GUIDING IDEAS

Forest Service Mission

The mission of the USDA Forest Service is to sustain the health, diversity, and productivity of the Nation's forests and grasslands to meet the needs of present and future generations.



"A Framework for Sustainable Recreation" Guiding Principles (abridged)

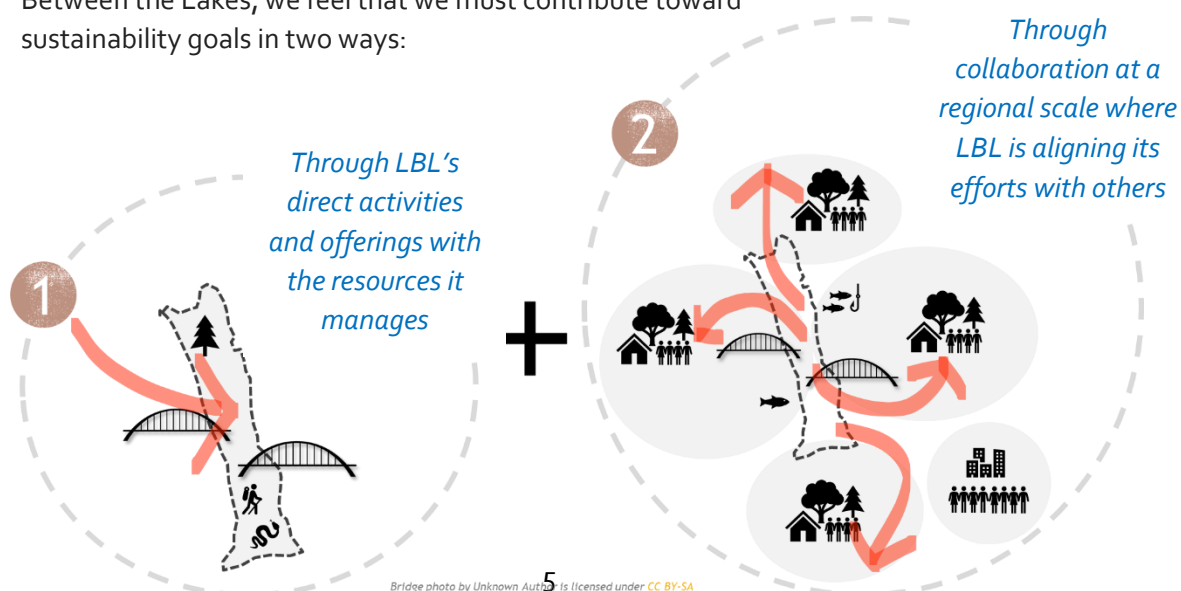
- Connecting people with their natural and cultural heritage is a vital thread in the fabric of society.
- Recreational activity in the great outdoors promotes healthy lifestyles.
- Sustainability underlies all program decisions.
- Community engagement is essential for creating a sustainable recreation program.
- National Forests and Grasslands are part of a larger landscape that includes: other public lands; open spaces at the local, state, and federal level; tribal lands; working farms and ranches, and; towns and cities.
- The Recreation program is integrated into the larger agency mission.

Land Between the Lakes Mission & Purpose

Land Between the Lakes' mission is clearly and carefully stated in the Protection Act: "to protect and manage the resources of the Recreation Area for optimum yield of outdoor recreation and environmental education through multiple use management; to authorize, research, test, and demonstrate innovative programs and cost-effective management of the Recreation Area; to help stimulate the development of the surrounding region; and to extend the beneficial results as widely as possible."

Sustainability Focus

In order to sustain the benefits of outdoor recreation and nature-based learning for present and future generations, Land Between the Lakes must address and work toward a sustainable balance among the three spheres of environmental, social, and economic conditions. At Land Between the Lakes, we feel that we must contribute toward sustainability goals in two ways:



SHEET 2

MEETING PURPOSE, OUTCOMES, FORMAT & AGENDA

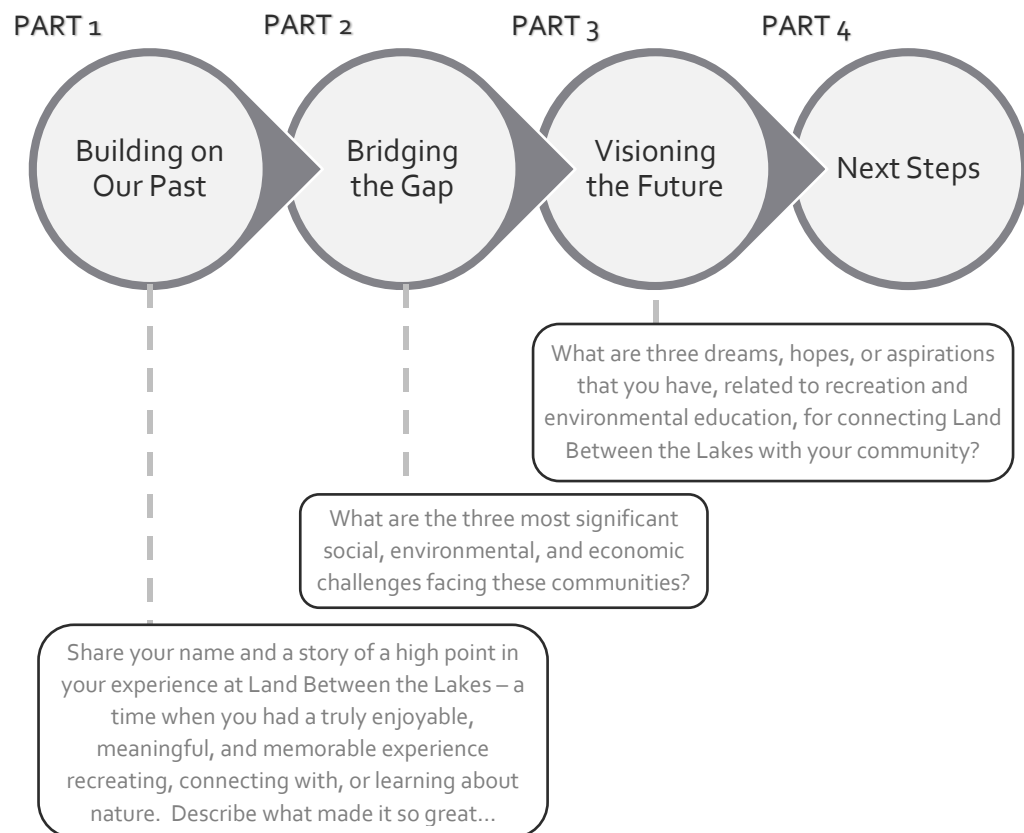
PURPOSE

Work together towards creating a shared vision, identify public priorities for fulfilling this vision, and brainstorm ways the public can be a part of the action steps for moving forward.

DESIRED OUTCOMES

- Share what's best about Land Between the Lakes in a fun & positive way
- Identify ways that Land Between the Lakes can respond to today's challenges
- Work together towards creating a shared vision
- Identify public priorities for fulfilling this vision
- Identify how Land Between the Lakes and the public can be a part of the actions steps for moving forward

MEETING FORMAT



AGENDA

Start Time	Minutes	Task	Handouts
5:45	15	Check-In/Gathering: Snacks and Refreshments	
Welcome & Introduction (15 min.)			
6:00	4	Welcome & introductions	
	3	Background & guiding ideas	Sheet 1
	3	Clarify meeting purpose, outcomes, format & agenda	Sheet 2
	5	Explain ground rules & roles, tables self-assign roles	Sheet 3
PART 1: BUILDING ON OUR PAST (33 min.)			
Carrying Forward High Points			
6:15	3	Explain task: High point stories	Sheet 4
	16	At tables, people introduce themselves and share stories	
	1	Explain task: List common themes	
	6	Tables identify common themes and list them, develop belief statements	
	7	Reporters share themes w/ large group	
PART 2: BRIDGING THE GAP (25 min.)			
Meeting Community Challenges and Problems			
6:48	3	Explain task: Community issues	Sheet 5
	10	At tables, people write down challenges, problems & issues	
	2	Explain task: Cluster issues and find common agenda	
	5	Tables cluster issues by sustainability dimensions, choose top 3 that best represent the potential for common agenda	
	5	Issues posted, clustered, and titled on Bridging Wall	
	2	<i>Break</i>	
PART 3: VISIONING THE FUTURE (35 min.)			
Creating a Shared Vision			
7:15	3	Explain task: Work in pairs to identify dreams	Sheet 6
	10	In pairs, people write down their dreams	
	2	Explain tasks: Cluster goals and choose the best	
	10	Tables cluster goals and choose the best	
	5	Dreams posted, clustered, and titled on the Vision Wall	
	5	Set priorities; explain multi-voting, vote, and tally the results	
	2	<i>Break</i>	
PART 4: NEXT STEPS (8 min.)			
Identifying Opportunities for Collective Action			
7:52	5	Explain next steps	Sheet 7
	3	Final thoughts & evaluation	Sheet 8
8:00		<i>Adjourn</i>	

SHEET 3

GROUND RULES & ROLES

GROUND RULES

- Remember: All ideas are valid
- Acknowledge differences, but don't "work" them
- Write everything on flip charts
- Observe time frames for tasks
- Seek common ground and joint action
- Have fun while getting lots done

ROLES OVERVIEW

Consultant:

- Set time and tasks
- Facilitate large group discussions
- Keep purpose front and center

USFS:

- Listen to understand
- Record what is being said
- Assist in follow-through

Participants:

- Provide information and make meaning
- Manage own small groups
- Develop vision and commit to it
- Engage in actions to make vision real

ROLES FOR SMALL GROUP DISCUSSIONS

Each small group manages its own discussion, data, time, and reports. Leadership roles can be rotated. Divide up the work as you wish.

- **Facilitator:** Assures that each person who wants to speak is heard within time available. Keeps group on track to finish on time.
- **Timekeeper:** Keeps group aware of time left. Monitors report-outs and signals time remaining to person talking.
- **Recorder:** Writes group's output legibly on flip charts, using each speaker's words. Asks people to restate long ideas briefly.
- **Reporter:** Delivers report to large group in time allotted.
- **Data manager:** Labels each record of the group's output. Takes output to meeting organizers responsible for collecting data.

SHEET 4

PART 1: BUILDING ON THE PAST

PURPOSE

- Introduce yourselves to fellow stakeholders at your table
- Help us connect with what works about Land Between the Lakes

TASKS

TASK 1: STORIES – High points about Land Between the Lakes

TIMEKEEPER: YOU HAVE 16 MINUTES FOR THIS TASK.

- Decide on leadership roles for your group (Sheet 3)
- **Facilitator:** Make sure that each person shares his or her name and a story in no more than 2 *minutes*. Take no more than 16 *minutes* for all your introductions and stories.
- **Timekeepers:** Alert speakers when their time is up.
- **Participants:** *Share your name and a story of a high point in your experience at Land Between the Lakes – a time when you had a truly enjoyable, meaningful, and memorable experience recreating, connecting with, or learning about nature. Describe what made it so great...*

TASK 2: THEMES – What high points say about Land Between the Lakes

TIMEKEEPER: YOU HAVE 6 MINUTES FOR THIS TASK.

- **Facilitator:** Take 3 *minutes* and help the group identify *common themes* in the stories you've just heard. Ask: *"What are the common themes in our stories that made these recreation and education experiences so memorable?"*
- **Recorder:** Write down the common themes identified by participants on the flip chart.
- **Facilitator:** Take another 3 *minutes* and develop *one or two statements of belief* – one or two things your group believes are enduring strengths of Land Between the Lakes, based on the common themes everyone has shared. "Enduring strengths" are qualities, benefits or values that should persist into the future. Ask the group to complete the sentence, *"An Enduring Strength of Land Between the Lakes is..."*
- **Recorder:** Write out the one or two beliefs large and legibly.
- **Reporter:** Present your one or two belief statements as directed by the facilitator.
- **Data manager:** Post the theme posters and the belief posters as directed by the facilitator.

SHEET 5

PART 2: BRIDGING THE GAP

PURPOSE

- Share critical issues and challenges that communities face today or may face in the future
- Help identify which of these issues Land Between the Lakes can help to improve the most

TASKS

TASK 1: SHARING – Critical issues and challenges facing your community

TIMEKEEPER: YOU HAVE 10 MINUTES FOR THIS TASK.

- **Facilitator:** Independently, have participants write down (1 per adhesive note) critical issues & challenges that are currently impacting or have the potential to impact the livelihood of their communities. “Communities” can include those groups they associate with geographically, socially, or professionally. Take no more than *6 minutes* for individual brainstorming.
- **Timekeepers:** After *6 minutes*, alert participants when time is up.
- **Participants:** Take a few minutes to think about the communities that you are a part of. ***What are the three most significant social, environmental, and economic challenges facing these communities?*** Large & legibly write one challenge or problem per adhesive note.
- **Facilitator:** Take another *4 minutes* and have participants quickly share and locate their ideas on the “Community Challenges” sheet by placing the idea in the appropriate sustainability dimension (social, environmental, economic, or overlapping if they are multi-dimensional).
- **Timekeepers:** Alert participants when time is up after *4 minutes*.

TASK 2: SHARED AIMS – Finding the potential for common ground

TIMEKEEPER: YOU HAVE 5 MINUTES FOR THIS TASK.

- **Facilitator:** Take *3 minutes* and help the group identify *common issues* from what you’ve just heard. Ask: ***“What are the common critical issues that our communities face?”***
- **Recorder:** Write down the common issues identified by participants on the flip chart.
- **Facilitator:** Take another *2 minutes* and decide as a group which issues have the greatest potential to be impacted by services and benefits of Land Between the Lakes. Ask, ***“Based on these common issues, which 1 or 2 can Land Between the Lakes help to improve the most?”***
- **Recorder:** Draw a star next to the one or two issues which the group selects.
- **Reporter:** Present your one or two issues as directed by the facilitator.
- **Data manager:** Post the “Community Challenge” sheet and the issues posters as directed by the facilitator.

SHEET 6

PART 3: VISIONING THE FUTURE

PURPOSE

- Share our dreams, hopes, and aspirations for what Land Between the Lakes can achieve
- Begin to develop a shared vision for Land Between the Lakes
- Help identify public priorities for fulfilling this vision

TASKS

TASK 1: INTERVIEWING – Our dreams, hopes, & aspirations for Land Between the Lakes

TIMEKEEPER: YOU HAVE 10 MINUTES FOR THIS TASK.

- Choose a partner for an activity in pairs.
- Make sure you have a few adhesive notes and something to write with.
- Tell your partner to imagine a positive future for Land Between the Lakes and the surrounding communities. Ask, **"What are three dreams, hopes, or aspirations that you have, related to recreation and environmental education, for connecting Land Between the Lakes with your community?"**
- Record your partner's comments, one idea per note.
- Switch roles and repeat.
- Take no more than 5 *minutes* for each of you.

TASK 2: POSTING – Sharing our dreams, hopes, & aspirations

TIMEKEEPER: YOU HAVE 15 MINUTES FOR THIS TASK.

- **Facilitator:** Ask the first person to read aloud and post his or her three notes on your flip chart. Ask the second person to read aloud and post his or her three notes. When one of the ideas is new, make sure it is posted apart from the others. When one of the ideas is similar to a previously posted idea, make sure it is physically right beside the similar idea, thus building a cluster of like ideas. Continue until everyone's ideas are posted and all similar ideas are posted together.
- **Recorder:** Help with posting and sorting of notes.
- **Facilitator:** Briefly review each idea in a cluster of ideas and help the group pick one idea that best captures the essence of all the notes in that grouping. Ask: **"Which note best captures the essence of this group of notes?"** Make that the "header."
- **Recorder:** Help post the headers at the top of their groupings

- **Facilitator:** Help the group identify two or three main goals, end results, or desired outcomes that represent the best thinking of the table. Ask: *"Of all these good ideas, which two or three represent our greatest hopes for the future of Land Between the Lakes?"* Remember: Don't focus on how you would make the idea come about – leave that for later thinking. Focus on what you want to see, have, or achieve.
- **Recorder:** Write the main goals out largely and legibly on special mini-posters.
- **Reporter:** Present the main goals as directed by the facilitator.
- **Data manager:** Post the notes posters as directed by the facilitator on the "Vision Wall."
- **Timekeeper:** Allow no more than *10 minutes* for the table tasks and an additional *5 minutes* for the large group task.

TASK 3: VOTING – Identifying public priorities

TIMEKEEPER: YOU HAVE 5 MINUTES FOR THIS TASK.

- **Participants:** Briefly review the goals and aspirations on the "Vision Wall." While still in your seats, identify those goals which you believe should be the highest priority for Land Between the Lakes. When invited by the facilitator, indicate your preference by placing a dot next to your three highest emerging priorities.
- **Participants:** If time permits, provide input to the question, *"What comments or reflections do you have on what you are seeing and hearing about your emerging priorities?"*

SHEET 7

NEXT STEPS

VOLUNTEER SIGN-UP

I'm willing to help and be a part of the conversation forward!

<i>Last name</i>	
<i>First name</i>	
<i>Street address</i>	
<i>Phone (day)</i>	
<i>Phone (evening)</i>	
<i>E-mail (please print clearly)</i>	

Check all that apply!

- ☐ I want to stay informed about LBL's Sustainable Strategy through periodic e-mail updates.
- ☐ I want to help craft LBL's vision statement for recreation & environmental education.
- ☐ I want to be a part of a small follow-up team to discuss future goals and collective ways we can make improvements in the following areas:
 - ☐ Area 1: _____
 - ☐ Area 2: _____
- ☐ I want to discuss ways that I, or my organization, can
 - ☐ Develop a partnership with Land Between the Lakes
 - ☐ Volunteer at Land Between the Lakes
 - ☐ Assist with recreation/trail improvement, environmental education, and/or forest health projects
- ☐ I want to review drafts of LBL's Strategic Sustainability Plan (by e-mail).
- ☐ I want to help raise funds.
- ☐ Other _____

Thank you very much!!

SHEET 8

EVALUATION

EVALUATION FORM

1. What were the most significant outcomes of this evening for you?

2. On a scale of 1 to 10, how confident are you that we will achieve the results we defined today?

<i>Not a snowball's chance</i>	1	2	3	4	5	6	7	8	9	10	<i>Watch our dust!</i>
--	---	---	---	---	---	---	---	---	---	----	--------------------------------

3. Why did you mark it as you did?

4. What do we need to do from here to maintain our momentum?

Thank you!!