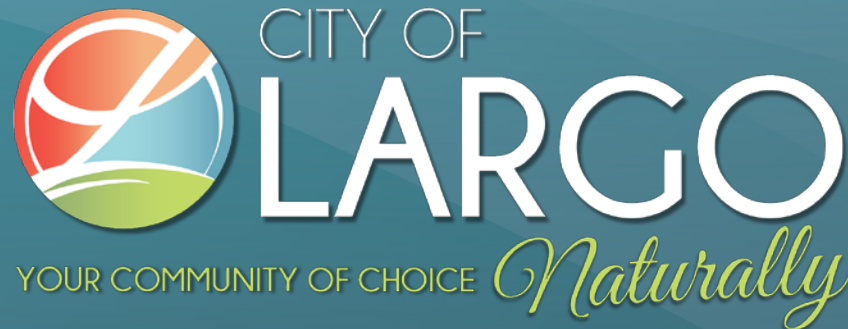


# West Bay Drive Corridor Downtown Improvements Project

August 21, 2019



# Downtown Revitalization Efforts

Guiding  
Community  
plans and policy  
documents



West Bay Drive  
Redevelopment  
Plan (2009)



Downtown  
Multimodal  
Plan (2010)



Strategic Plan  
(2017)

# Downtown Revitalization Efforts



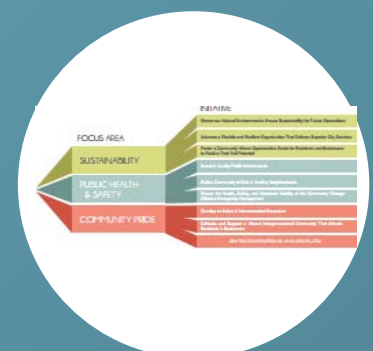
## West Bay Drive Redevelopment Plan (2009)

- Community conversations began in 2007
- Residents & businesses supported walkable, mixed use, downtown
- Prioritized transit and neighborhood safety



## Downtown Multimodal Plan (2010)

- The public desired neighborhood safety and connectivity.
- Desire for pedestrian and bike connections to Downtown Largo destinations.

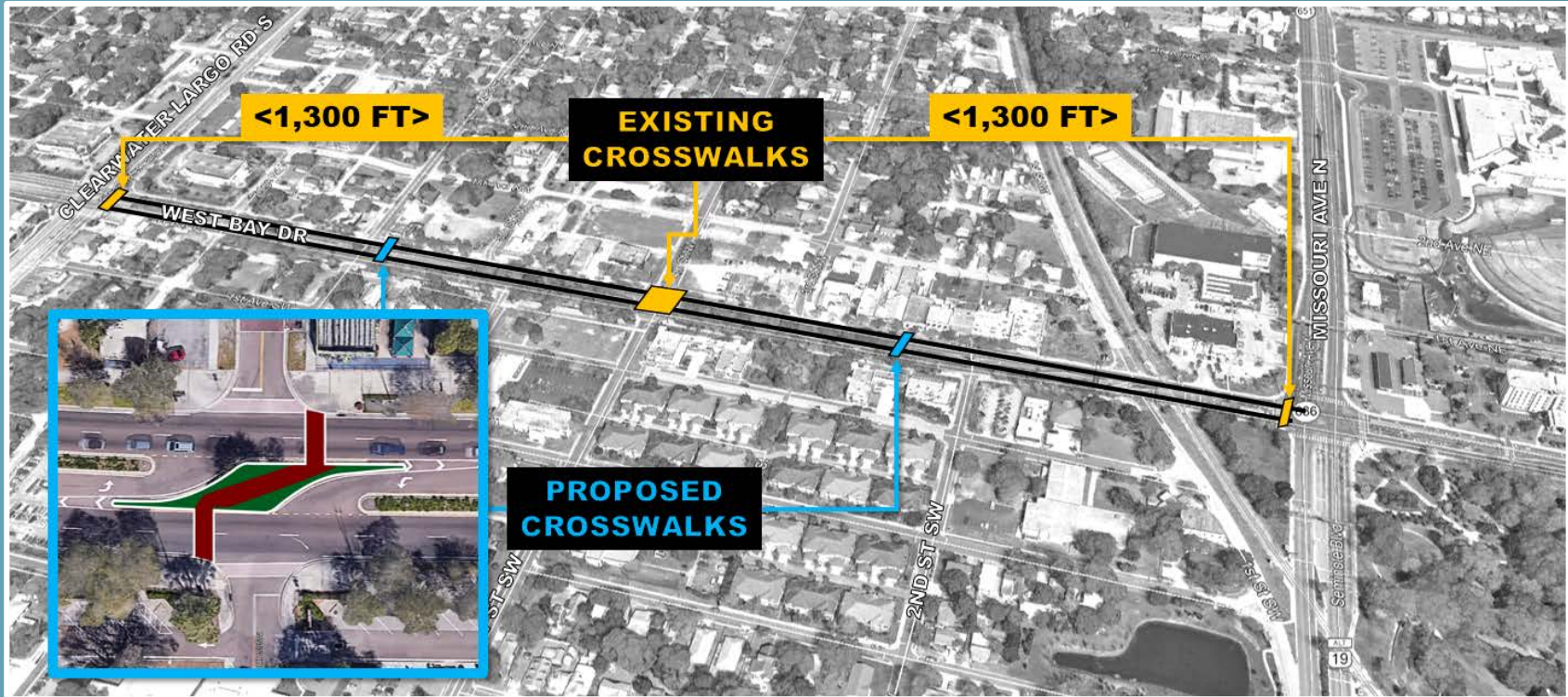


## Strategic Plan (2017)

- Community values surveys revealed a desire for an active, dynamic downtown to complement surrounding amenities.



# Concurrent Downtown Improvement Projects



## West Bay Drive Corridor Improvements



West Bay Drive Trailhead



West Bay Lofts

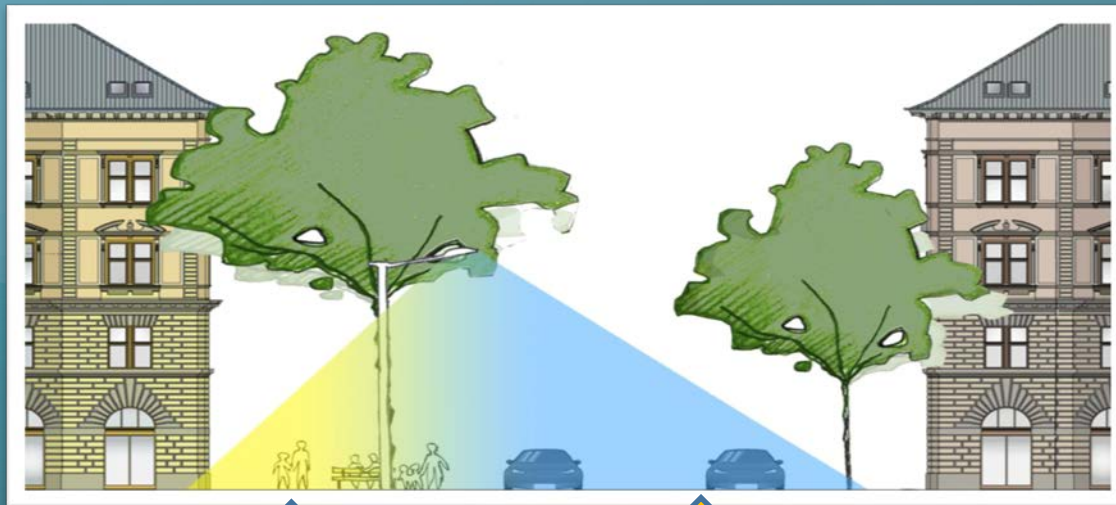


Downtown Plaza

# New Lighting Features

The new, modern poles will have a dual emphasis on providing light for pedestrians *and* roadways. The new features include:

- Electrical outlets for holiday lighting
- LED lighting
- Banner masts
- Capability for 5G telecommunications infrastructure



**Warmer Light  
to Sidewalk**

**Cooler Light  
to Roadway**



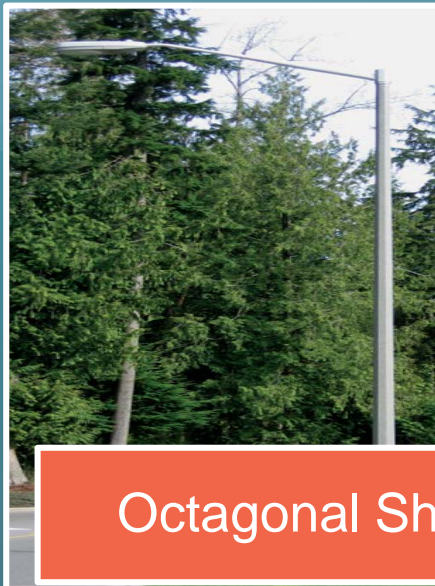
# New Lighting Features



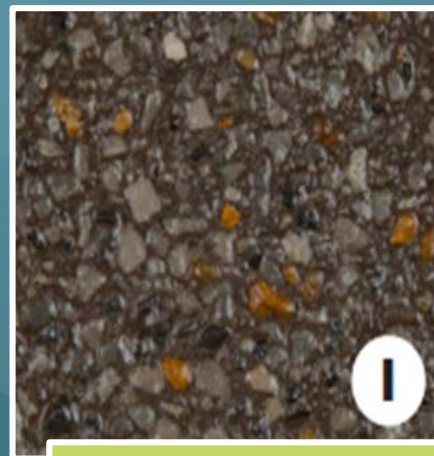
Existing 30 ft Poles



New 18 ft Poles



Octagonal Shape



Neutral Color

# New Mid-block Crossings

- Two new locations to safely cross West Bay Drive
  - West of 2<sup>nd</sup> Street
  - West of 5<sup>th</sup> Street
- Pedestrian-activated flashing beacons
- High-visibility crosswalks



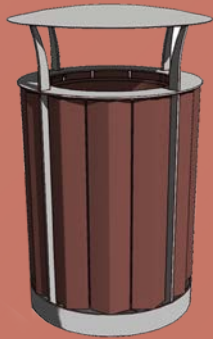
# New and Improved Sidewalks



- New sidewalks will minimize cracking
  - Brick strips will be removed from the sidewalk
  - Curb ramps will be aligned
- 
- Crosswalks will be adjusted and rebuilt with brick
  - A bulb-out style curb extension will be installed at 1<sup>st</sup> St SW



# Updated Street Furniture



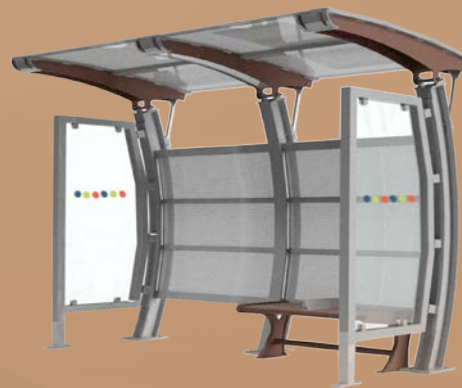
**Waste Receptacles**



**Benches**



**Bicycle Racks**



**Bus Shelters**

# Construction: What to Expect



- Estimated start: October 7, 2019
  - Total Construction length: 10 months
  - Most work will occur during business hours of 8am-5pm
- 
- West Bay Drive will remain open during construction.
  - Sidewalk access to businesses at all times\*

*\*Nelson Construction will coordinate with your business on the day of the quick-set concrete pour in front of your business. Access must be limited for approximately 2 hours while concrete cures.*

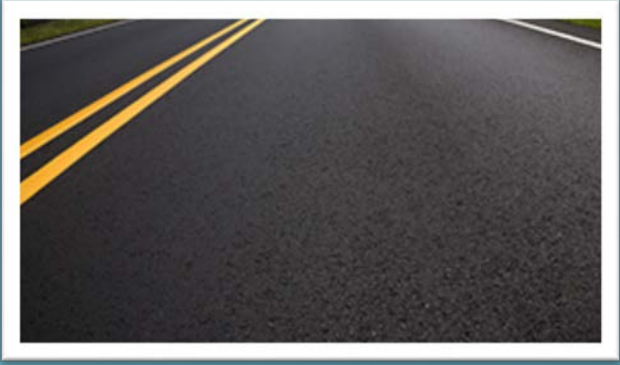
# Construction: What to Expect

- Approximately 40 businesses will see improvement work in front of their property.
- Public parking lots will continue to remain open and on-street parking will also be available.
- City anticipates no impact to mail delivery.





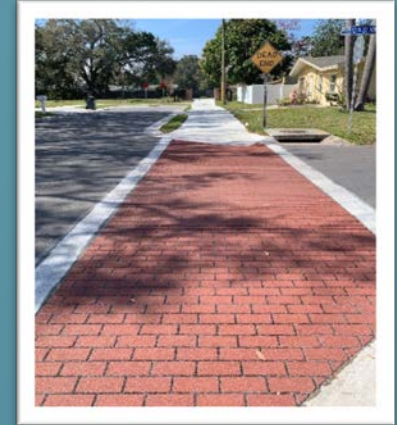
# Construction: What to Expect



- **Mill & resurface:**  
**2 weeks**
- Some work will occur outside normal business hours.

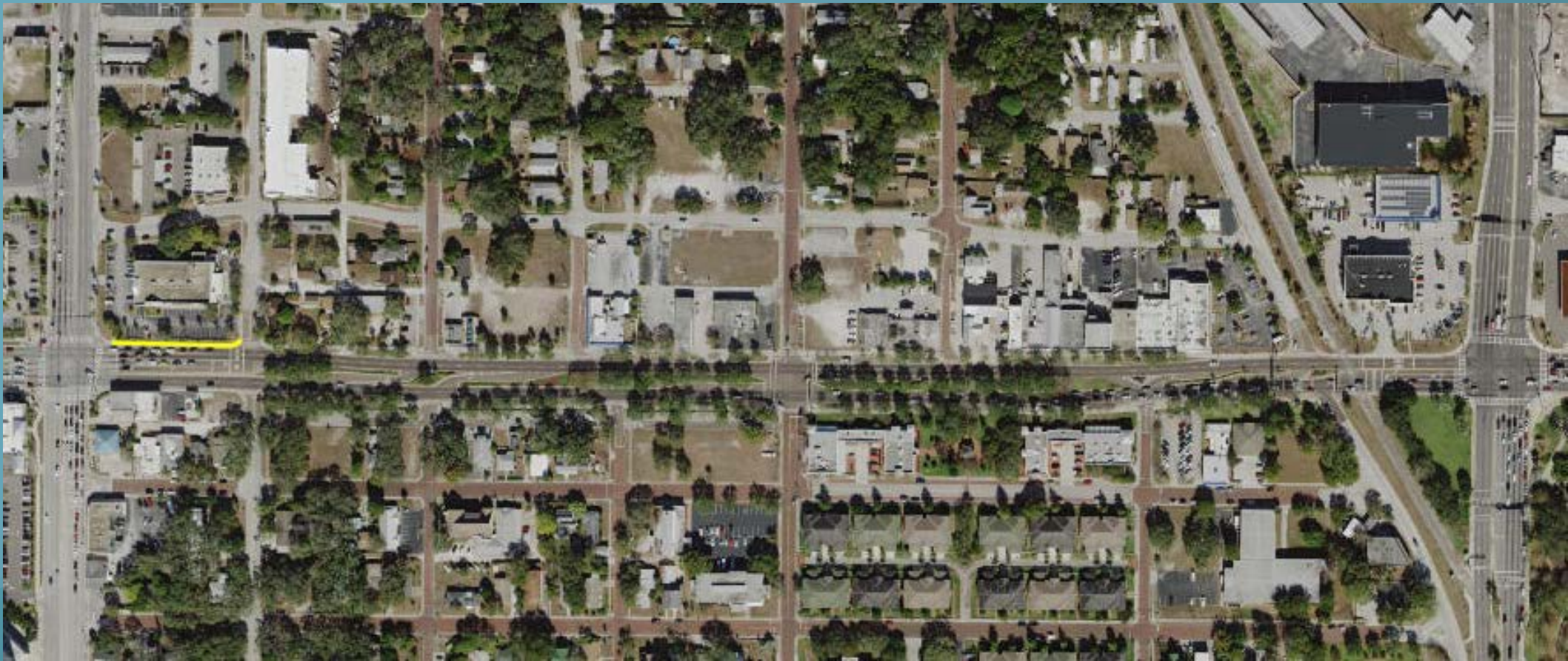


**Sidewalk work:**  
**10 months**  
Segments of the sidewalk will be closed incrementally.



**Side streets**  
closed **1-2 weeks at a time**  
to install ribbon curb and brick crosswalks.

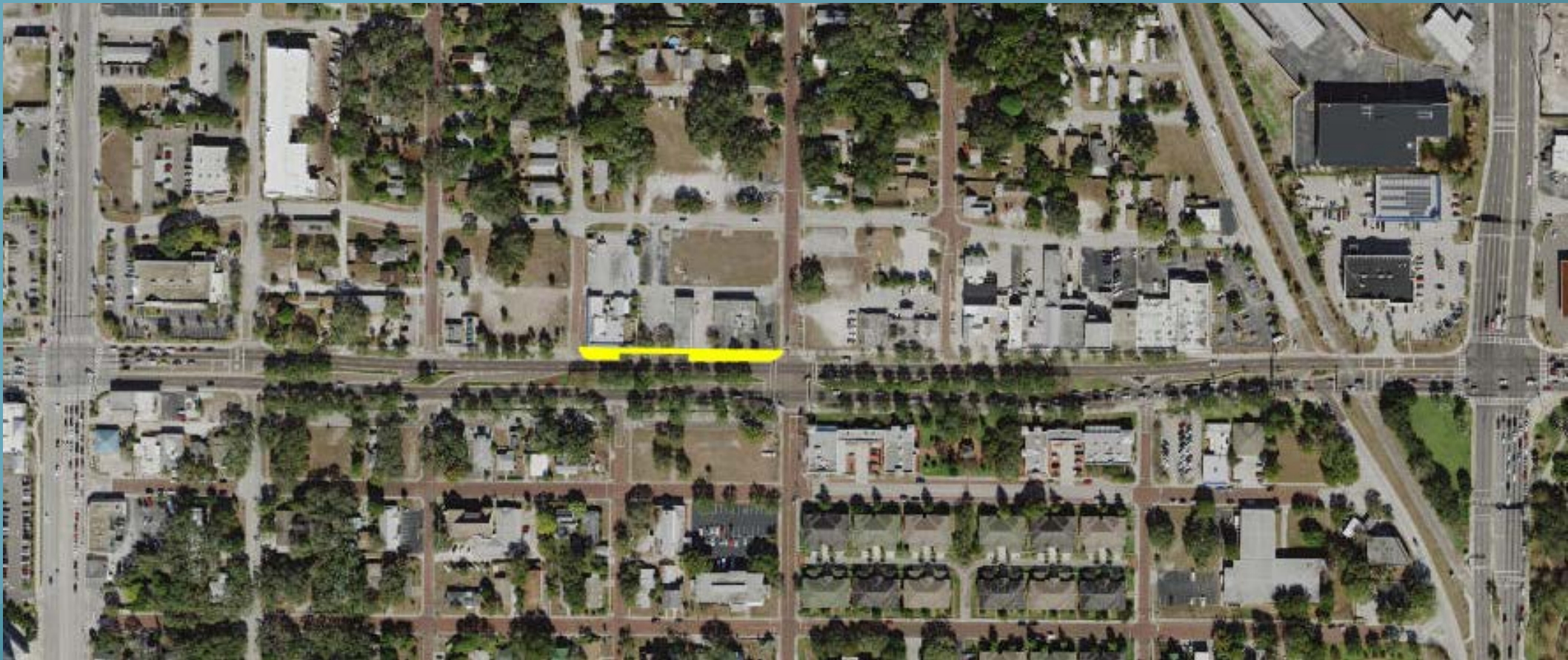
# Sidewalk: Estimated 50 weeks



**CONCEPTUAL SEQUENCE FOR DEMONSTRATION PURPOSES ONLY  
ACTUAL EXTENTS AND SEQUENCE MAY BE DIFFERENT**



# Sidewalk: Estimated 50 weeks



**CONCEPTUAL SEQUENCE FOR DEMONSTRATION PURPOSES ONLY  
ACTUAL EXTENTS AND SEQUENCE MAY BE DIFFERENT**



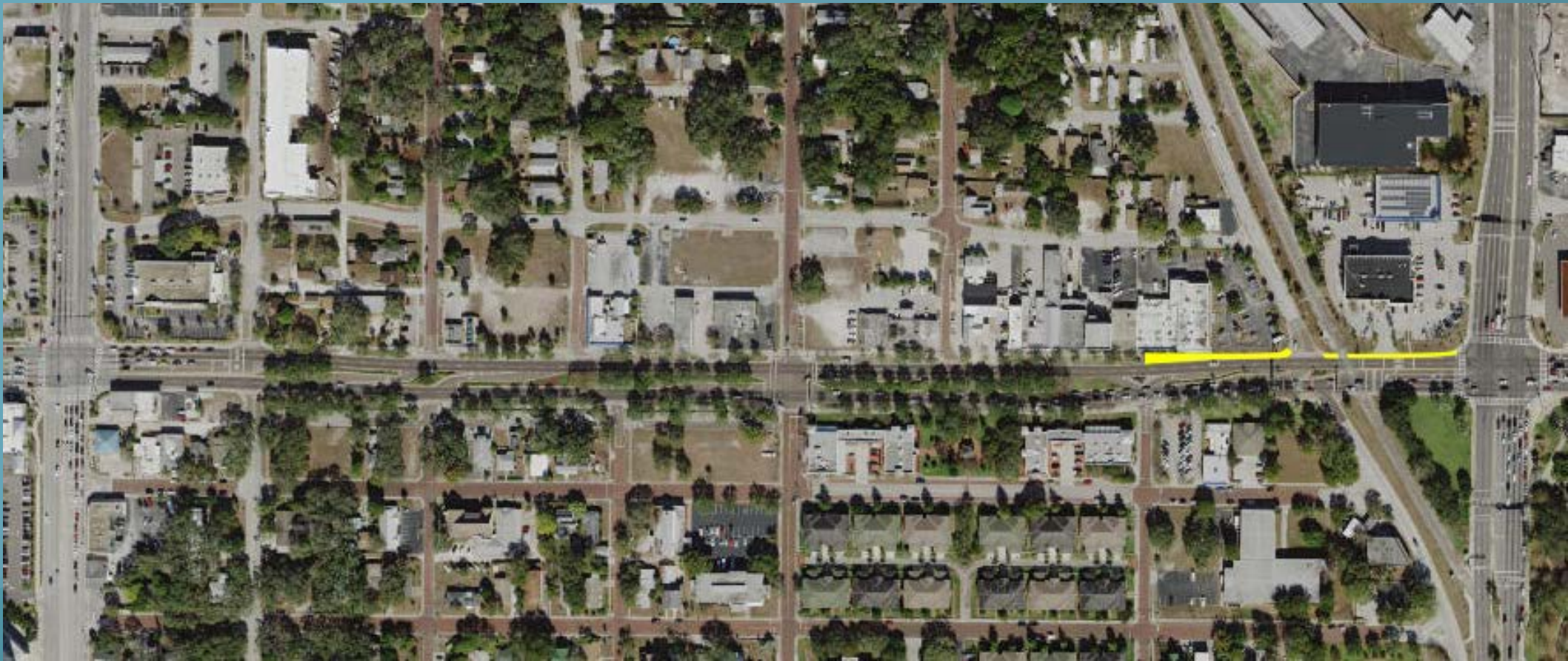
# Sidewalk: Estimated 50 weeks



**CONCEPTUAL SEQUENCE FOR DEMONSTRATION PURPOSES ONLY  
ACTUAL EXTENTS AND SEQUENCE MAY BE DIFFERENT**



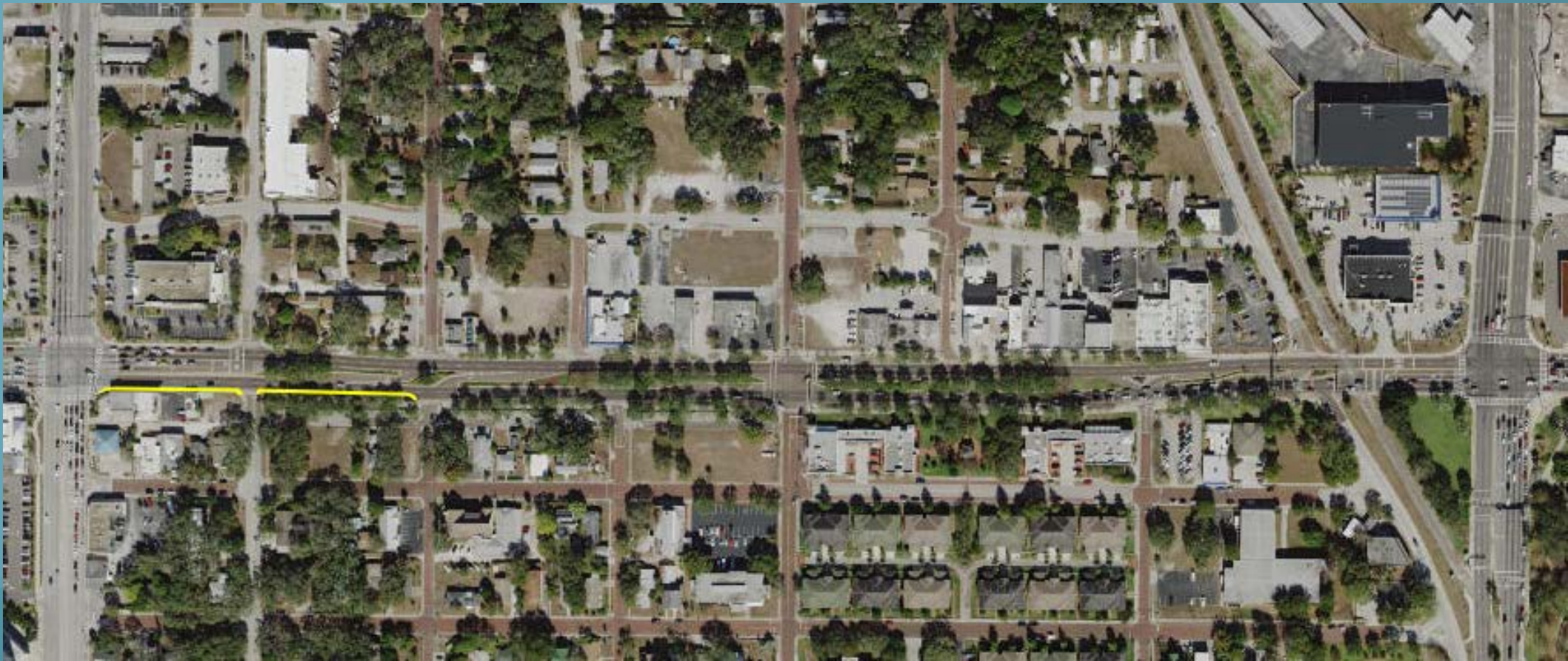
# Sidewalk: Estimated 50 weeks



**CONCEPTUAL SEQUENCE FOR DEMONSTRATION PURPOSES ONLY  
ACTUAL EXTENTS AND SEQUENCE MAY BE DIFFERENT**



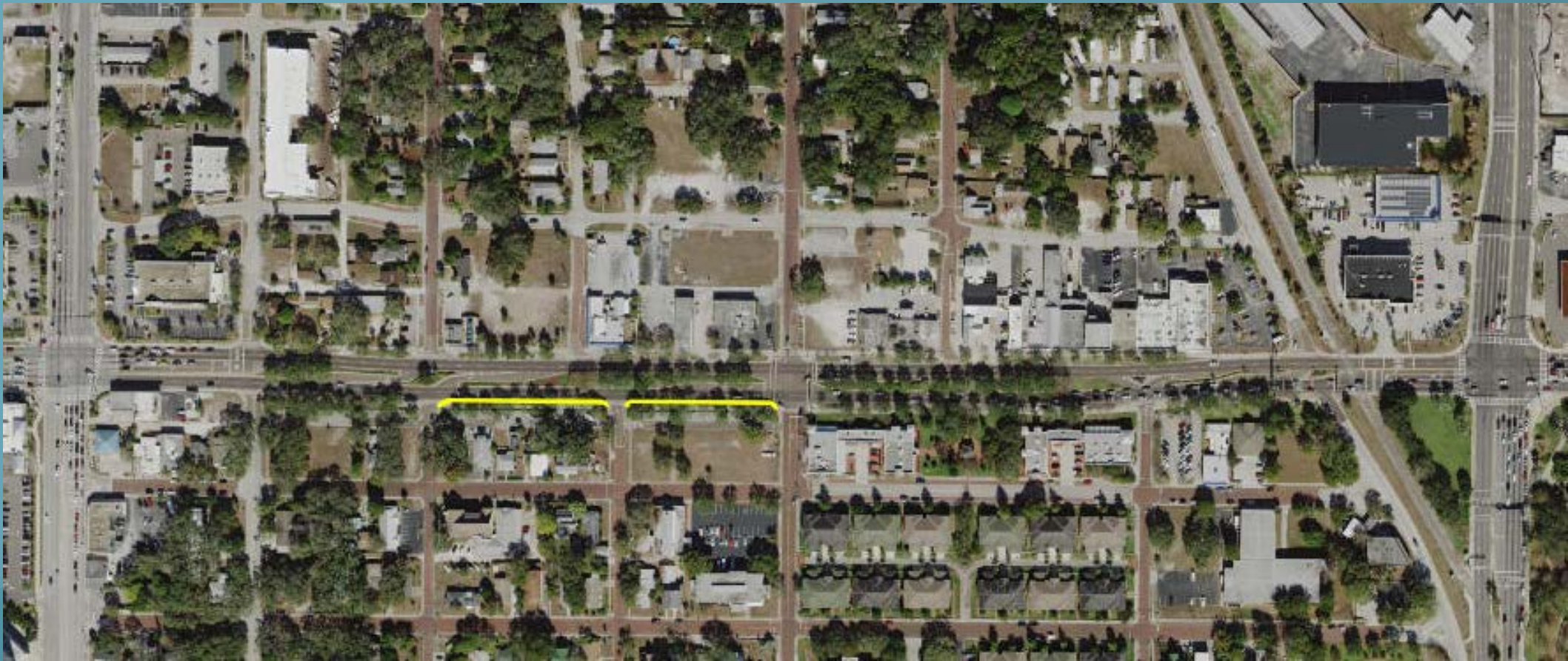
# Sidewalk: Estimated 50 weeks



**CONCEPTUAL SEQUENCE FOR DEMONSTRATION PURPOSES ONLY  
ACTUAL EXTENTS AND SEQUENCE MAY BE DIFFERENT**



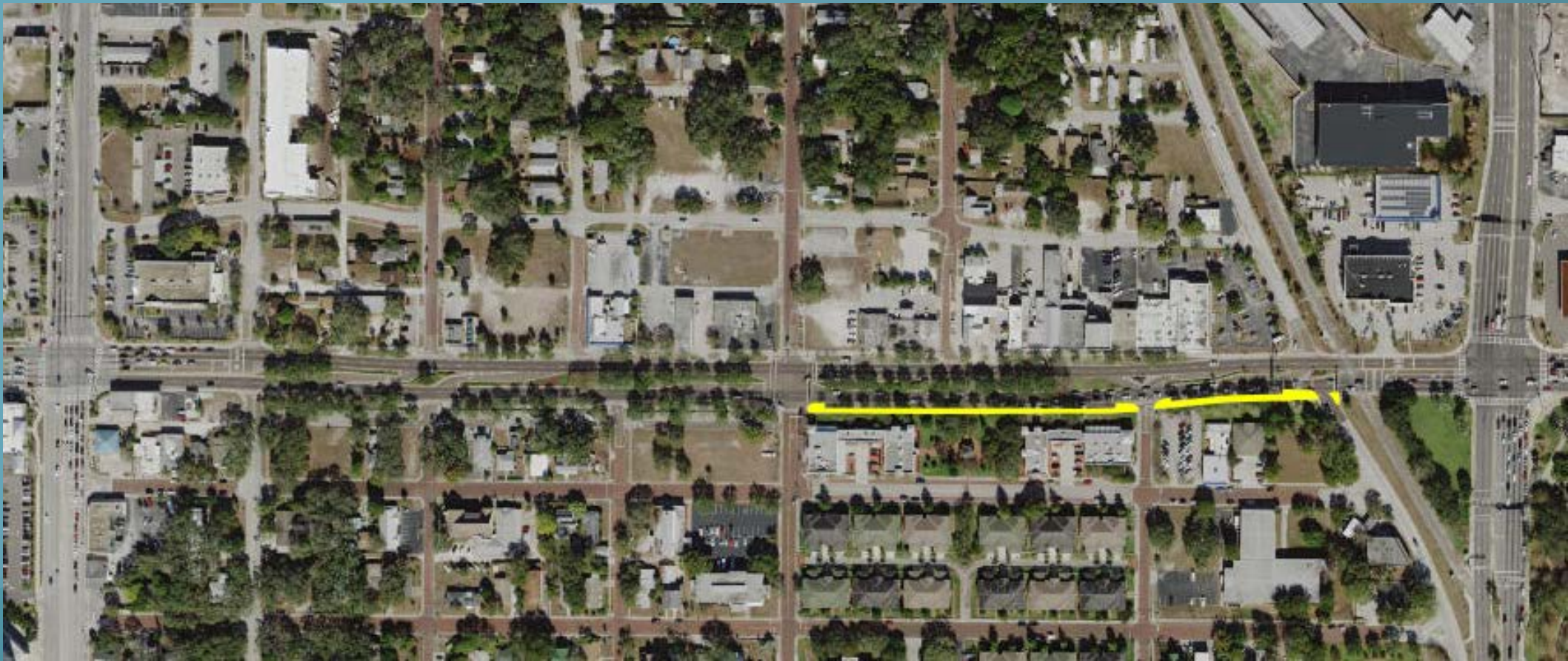
# Sidewalk: Estimated 50 weeks



**CONCEPTUAL SEQUENCE FOR DEMONSTRATION PURPOSES ONLY  
ACTUAL EXTENTS AND SEQUENCE MAY BE DIFFERENT**



# Sidewalk: Estimated 50 weeks



**CONCEPTUAL SEQUENCE FOR DEMONSTRATION PURPOSES ONLY  
ACTUAL EXTENTS AND SEQUENCE MAY BE DIFFERENT**



# Mill & Resurface: Estimated 2 weeks



CONCEPTUAL SEQUENCE FOR DEMONSTRATION PURPOSES ONLY



# Mill & Resurface: Estimated 2 weeks

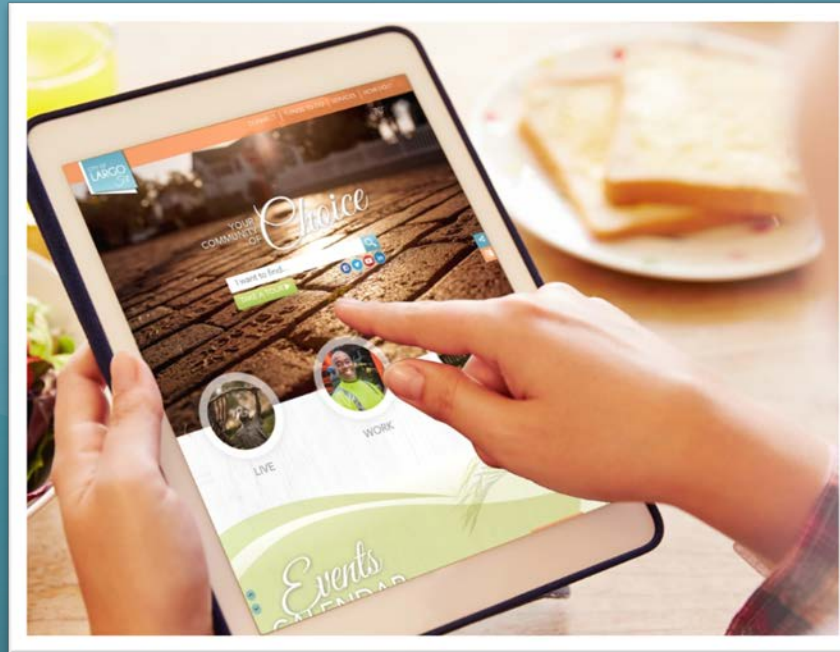


CONCEPTUAL SEQUENCE FOR DEMONSTRATION PURPOSES ONLY

# Connect

Need updates on West Bay Drive Corridor  
Improvements?

Visit *[Largo.com/projects](http://Largo.com/projects)*





# Contacts

Barry Westmark,  
Design Project Manager  
(727) 587-6713, ext. 4433  
[bwestmar@largo.com](mailto:bwestmar@largo.com)

Brian Highnote,  
Construction Manager  
(727) 587-6713, ext. 4402  
[bhighnot@largo.com](mailto:bhighnot@largo.com)

Tim Nievinski  
David Nelson Construction Company  
(727) 200-0033  
[tnievinski@nelson-construction.com](mailto:tnievinski@nelson-construction.com)



Have questions?

Visit our information stations to review the project plans and have your questions answered by one of our representatives.