



elementary school: Bantam, Connecticut

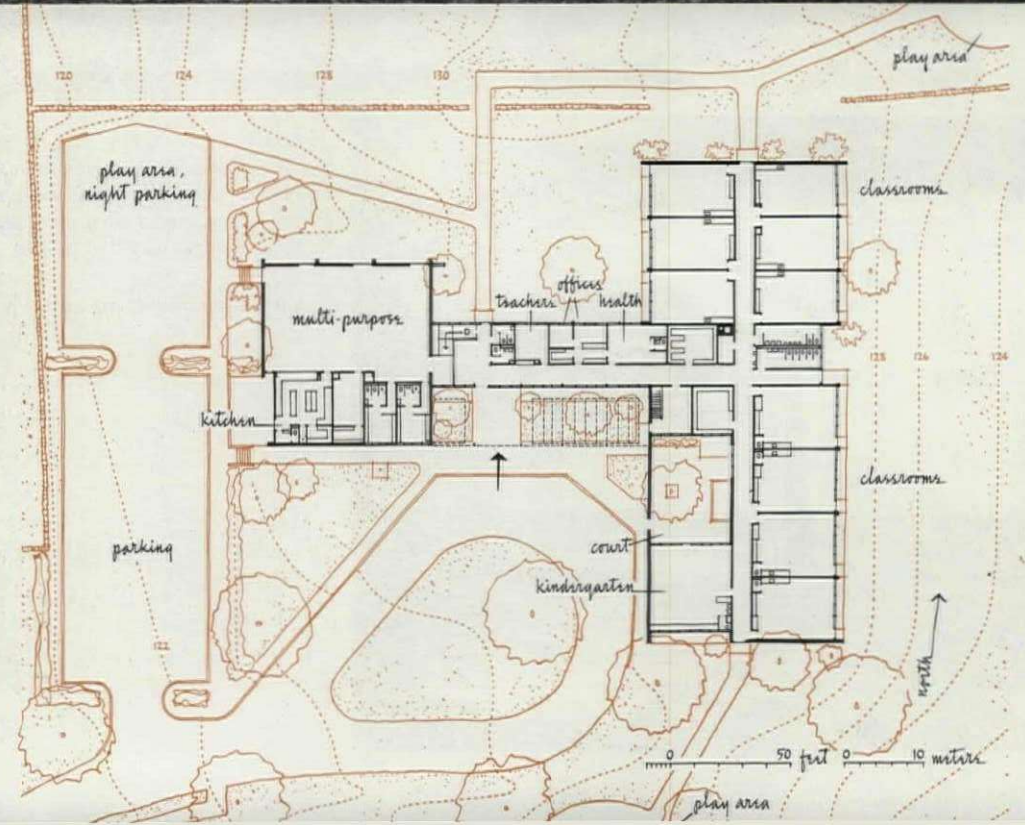
Economy was the watchword in the design of this rural school containing ten primary classrooms, a kindergarten, and a multipurpose room. Basic scheme for the plan consists of two major elements—classroom wing and common-use area — joined by a narrow neck in which the lobby, offices, and health room are located.

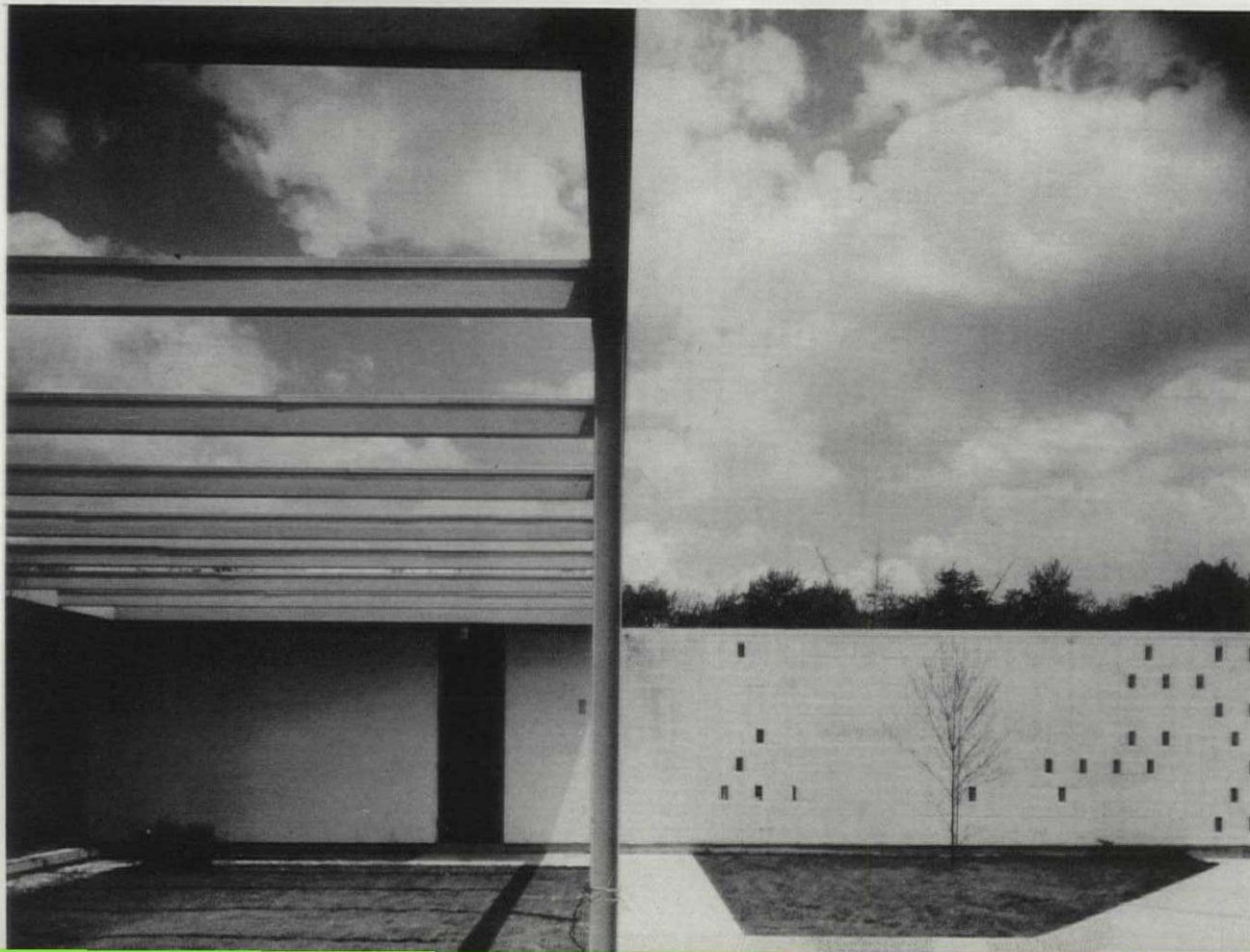
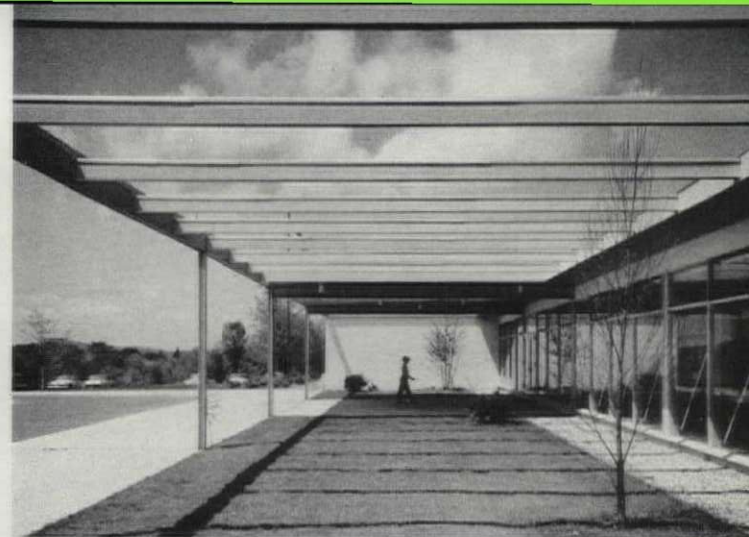
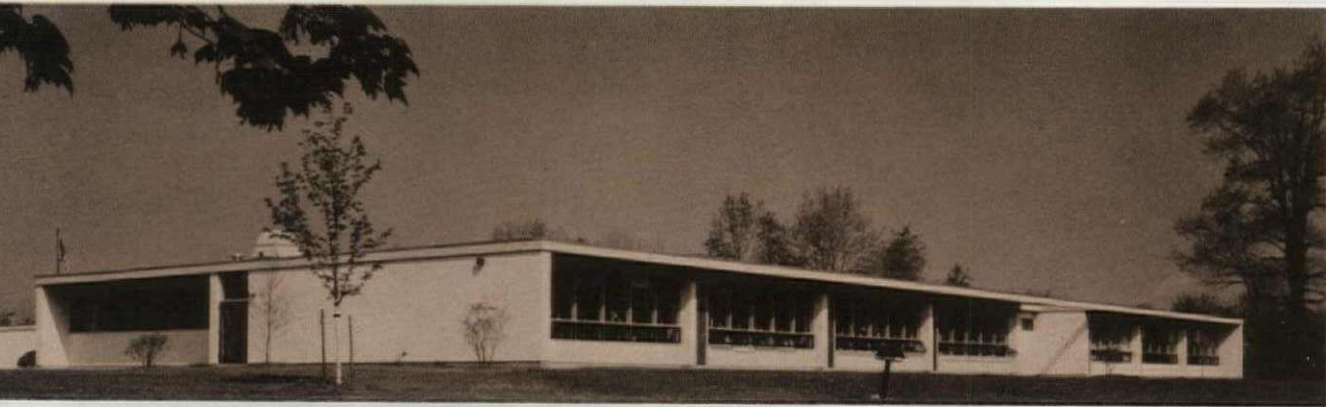
A fundamental ingredient in structural economy was adoption of a one-story scheme, which was considered most practical for children of elementary-school age in any event. This allowed the optimum relationship between classrooms and outdoors; and organization of rooms with their short dimensions adjacent to the corridor further cut construction costs.

The structure is of lightweight concrete-

block bearing walls with laminated-wood girders and beams supporting the roof. Flooring is mainly asphalt tile, though maple with gymnasium finish is used in the multipurpose room. Interior block walls are unpainted and exposed. Laminated beams have a natural finish. Color accents occur in soffits painted bright vermilion and in classroom bulletin boards that are variously blue, red, or yellow.

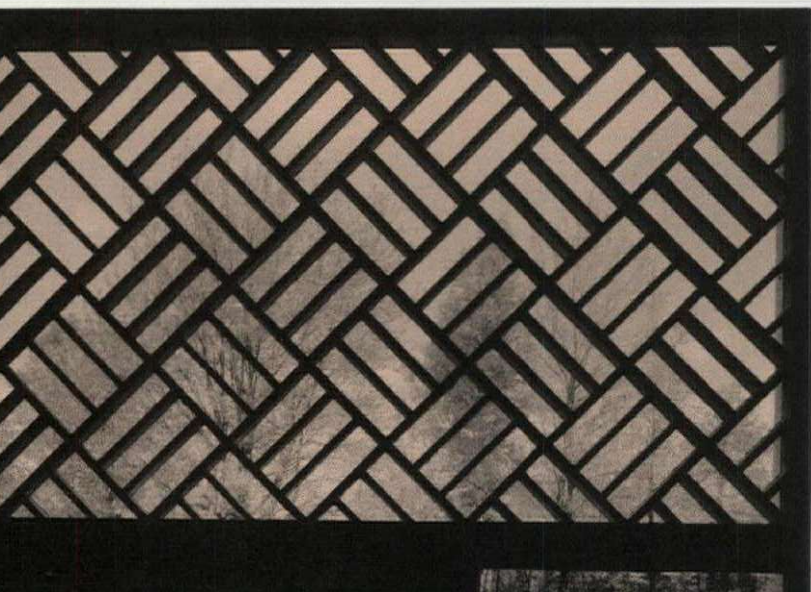
Fluorescent lighting is used throughout. An oil-fired, hot-air system, using under-floor ducts and registers near outside walls, heats the building. Structural Engineers, General Engineering Associates; Mechanical Engineers, Fred S. Dubin & Associates; General Contractor, Bonvicini Building Company, Inc.





architects associated | Marcel Breuer and O'Connor & Kilham
design associate | Herbert Beckhard
job captain | Richard deRham
landscape architect | Bryan J. Lynch

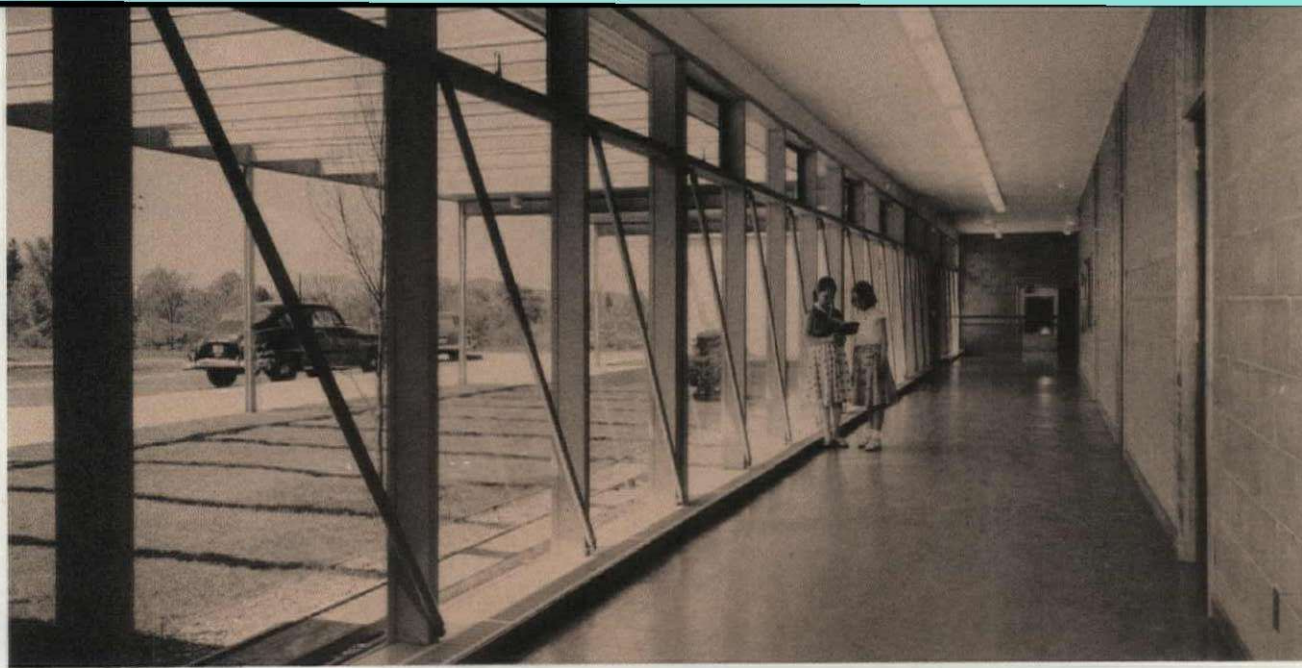
elementary school: Bantam, Connecticut



From each of the classrooms (above), a door opens to the outside. Sash, combining fixed panels and pivoting units, are of wood. For acoustical control, ceilings are finished in random-perforated cane-fiber tile. Artificial lighting is from 8-ft, surface-mounted fluorescent fixtures.

Sliding wood doors can open the multipurpose room (left) to the outdoors. Sky glare is tempered by a decorative wood screen. Dome-reflector incandescent units provide artificial lighting. Flooring is maple.

Photos: Ben Schnall



The glazed corridor (right), leading back from the main entrance doors to the classroom wing, faces south and is bordered by a trellised and landscaped forecourt. Light fixtures: single-line, continuous fluorescent units.

The kindergarten (below right) has an adjoining walled and landscaped play yard (below) that more than doubles usable space.

