

## Island Park Master Plan

Public Input Meeting #2 Summary

6pm-8pm

Fargo Park District – Robert D. Johnson Recreation Center

4/26/2022

### Design Workshop Meeting Summary

A Public Input Meeting and Open House was facilitated on April 26, 2022 at the Robert D. Johnson Recreation (RDJ) Center in Fargo, ND. Members of the design team of AGL Landscape Architects were present at the RDJ Center Gymnasium where design concepts, diagrams, and sketch illustrations were presented for public input and feedback.

The design team provided a presentation to inform attendees of the following items being studied during the master planning process for Island Park:

- Project Overview and Schedule
- Reasons for Preparing a Master Plan for Island Park
- Goals for the Project
- Summary of Top Comments – MindMixer
- Summary of Comments – Workshop and Public Input Meeting #1
- Review Spatial Relationship Diagrams – Options 1 & 2



The two (2) layout options were presented to the attendees with the following main park elements described as follows:

### Spatial Relationship Diagram – Option 1

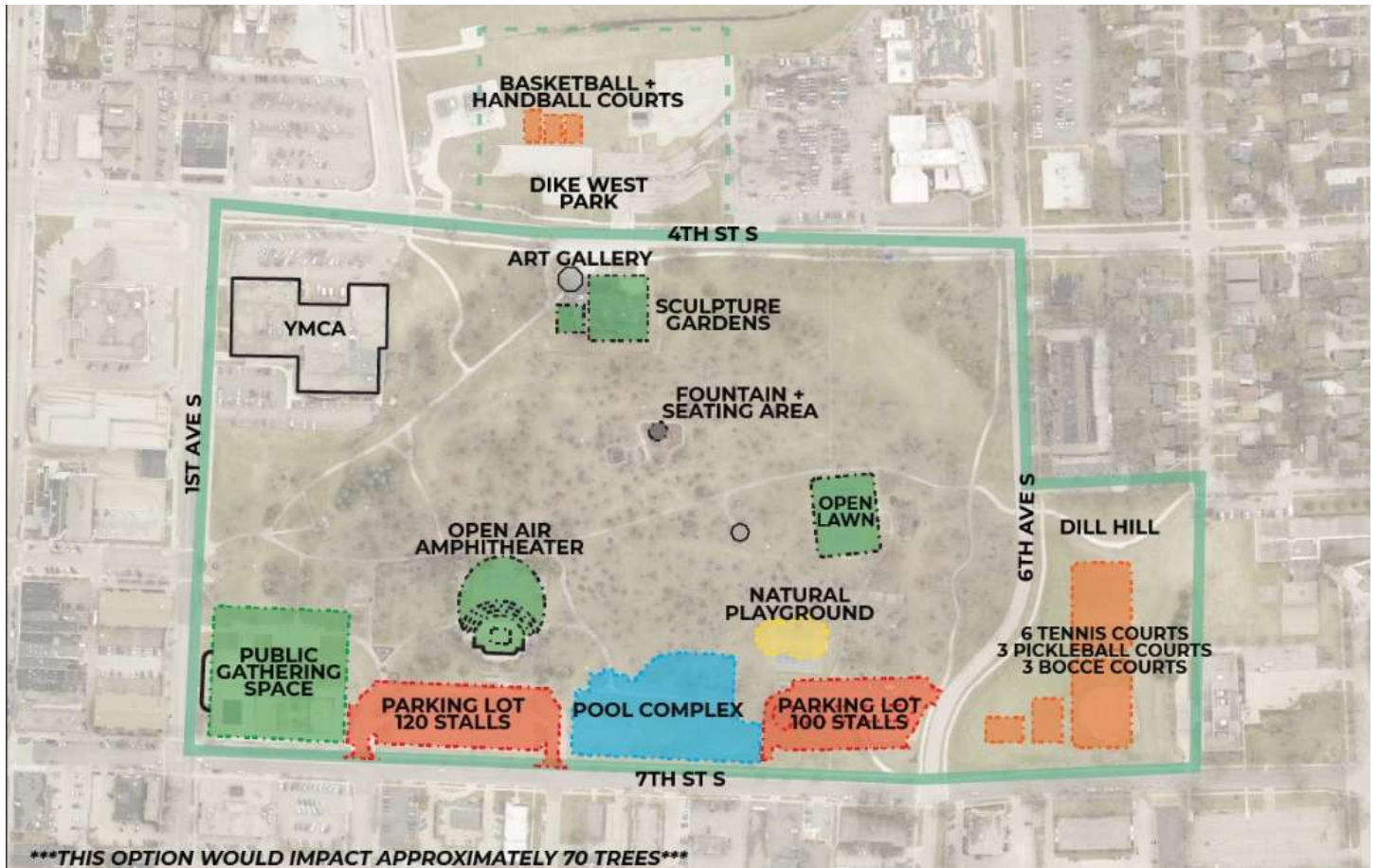


Figure 1 - Spatial Relationship Diagram - Option 1

#### **Gathering Space:**

Includes an approximate 1.5 Acre space for major events at Island Park, like Midwest Kid Fest, Island Park Show, FM Pride, Sanford's Roger Maris Summer Night, Concerts, Block Parties, Food Vendors, and Farmer's Markets. This space would be a blend of hard surface at the edges of the space where vendors and event vehicles can park without impacting trees and root systems further inside the park. The remainder of the space would be lawn and landscape space that allows flexible recreation use for passive events like yoga, fitness classes, or other group activities and gatherings.

#### **120 Stall Parking Lot:**

Includes a reconstruction of the existing parking lot to achieve approximately 120 stalls and will mainly serve the pool facility during peak summer hours. During the remainder of year, this parking lot will serve the entire park space as it does currently.



### **Open Air Amphitheater at Scherling Complex Site**

The existing Scherling Complex concrete grandstand and rooms below could be removed and the existing wall façade of the grandstand could be preserved and enhanced to serve as the backdrop for an open-air amphitheater and stage in a bowl-type configuration where spectators would face west and performers on stage would face east. A performance stage of approximately 30'x40' would be located on the east side of the remaining grandstand wall facade and performers would face east toward the audience. An approximate permanent ticketed seating arrangement of 450 seats would be placed along the lower level adjacent to the stage and approximately 500 moveable or lawn chair seats could be placed at the upper lawn space of the amphitheater. The potential renovation concept of the grandstand should be further coordinated with guidance and input from the Fargo Historic Preservation Commission.

### **Pool Complex:**

Includes a 50M pool, leisure pool with drop slides, play structure, spectator bleacher seating, 4-season bathhouse facility with restrooms and concessions, water slide complex, and lazy river. The building facility in this concept is situated at the center of the outline area to serve the remainder of the park, nature play area, and amphitheater space for tickets, concessions, and restroom use during performances.

### **Heritage Tree Preservation and Infill Area:**

Island Park is special because of the extensive tree canopy that has existed for generations. This area should be preserved, enhanced, and infilled with appropriate species that will perpetuate and improve the quality of tree canopy that exists today. Examples best suited for parks and public spaces include large deciduous and disease resistant species like Oaks, Elms, Black Walnut, Kentucky Coffeetree, Sugar Maple, Honeylocust and others with an upright high shade canopy. Longevity of growth rate should be prioritized in these areas.

### **Natural Play Area:**

Nature play is when children are provided with the opportunity to engage in unstructured play activities in outdoor settings where natural elements feature, such as logs, stumps, rocks and water, as opposed to conventional manufactured play equipment with plastic and other prefabricated or manufactured products.

### **100 Stall Parking Lot:**

Includes a reconstruction of the existing parking lot to a one-way loop configuration with a center island to preserve trees in the middle of the existing parking lot. Total parking achieved is approximately 100 stalls including accessible parking spaces.

### **Tennis and Pickleball Complex at Dill Hill**

Includes 6 tennis courts, 3 pickleball courts, and 3 bocce courts in the open space and skinned infield area at Dill Hill

### **Pedestrian Underpass at 6<sup>th</sup> Ave. to Dill Hill**

A pedestrian underpass under 6<sup>th</sup> Ave. would provide a safe pedestrian connection to Dill Hill and the new tennis court complex for access to and from the parking lot and restroom facilities at the pool complex. This underpass also connects the neighborhoods and schools to the south to Island Park for increased safety for pedestrians and bicyclists.





### **Open Lawn**

Includes converting existing tennis courts in this area to an open lawn or garden space that could serve as a quiet space within the park, or as a smaller open space for weddings or other small gatherings in the park.

### **Bandstand / Gazebo Seating Area:**

Includes a paved space with improved accessible walkway for seating of small events like weddings, small concerts, or performances.

### **Fountain and Seating Area:**

The area presently occupied by the existing playground would be converted into a seating area and fountain to offer the element and sound of falling water within Island Park. This location is ideal because of its central walkable location and open clearing of trees, allowing warmth of sunshine and quiet solitude within the park.

### **Indoor Art Gallery Space**

Includes preservation and reuse of the Katherine Kilbourne Burgum Pavilion added in 2011 and converted to a public indoor art space with changing exhibits throughout the year /seasons.

### **Sculpture Garden:**

The space presently occupied by the former FMCT building wing would be converted to an outdoor public sculpture garden and accessible to all park users. Historic sculptures located throughout the park would be relocated to this area and space is available for additional exhibits that may be permanent or temporary installations. This could also be an ideal space for a winter sculpture garden that could include special lighting and offer protection from the wind from the trees and topography in this area.

### **Pedestrian Underpass at 4th St.**

A pedestrian underpass under 4<sup>th</sup> St. would provide a safe pedestrian connection to Dike West as well as the riverfront trail system. Major events and programming at Island Park like the swimming pool would be connected to the greater community through access to the trail system and further encourage biking and walking to Island Park.

### **Relocate Basketball and Handball to Dike West**

In an effort to group similar active facilities and allow further passive recreation spaces in Island Park, the existing handball and basketball courts at the Scherling Complex could be relocated to Dike West in the approximate area shown.

### **Tree Impacts Based on this Layout:**

It is estimated that the following tree quantities would need to be removed to accommodate the pool location, parking facilities, and other modifications to the park: **70 Trees**

## Spatial Relationship Diagram – Option 2

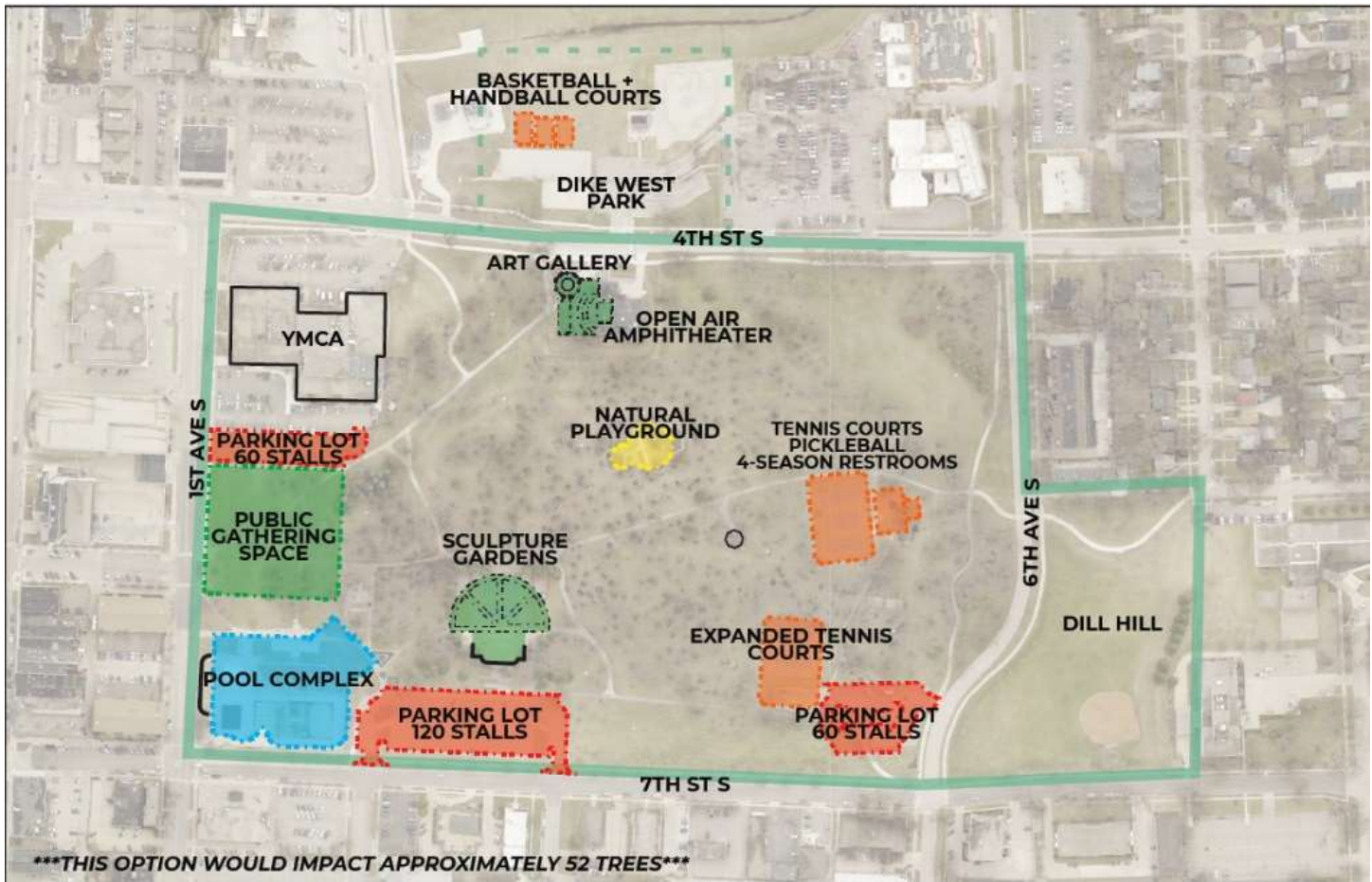


Figure 2 - Spatial Relationship Diagram - Option 2

### 60 Stall Parking Lot:

Includes a new parking lot of approximately 60 stalls, including accessible parking spaces, which serves as additional event parking for the proposed gathering space and could also serve as parking for vendors, farmer's market, and general parking for the east portion of Island Park. This parking lot when not used for park events can be shared with the YMCA upon potential shared-use agreement.

### Gathering Space:

Includes an approximate 1.5 Acre space for major events at Island Park, like Midwest Kid Fest, Island Park Show, FM Pride, Sanford's Roger Maris Summer Night, Concerts, Block Parties, Food Vendors, and Farmer's Markets. This space would be a blend of hard surface at the edges of the space where vendors and event vehicles can park without impacting trees and root systems further inside the park. The remainder of the space would be lawn and landscape space that allows flexible recreation use for passive events like yoga, fitness classes, or other public group activities and gatherings both scheduled and unscheduled.



### **Pool Complex:**

Includes a 50M pool, leisure pool with drop slides, play structure, spectator bleacher seating, 4-season bathhouse facility with restrooms and concessions, water slide complex, and lazy river. The building in this concept is situated at the southeast corner of the outline area so as to serve the gathering space and remainder of park space.

### **120 Stall Parking Lot:**

Includes a reconstruction of the existing parking lot to achieve approximately 120 stalls and will mainly serve the pool facility during peak summer hours. During the remainder of year, this parking lot will serve the entire park space as it does currently.

### **Sculpture Garden:**

The space presently occupied by the Scherling Complex Tennis Courts would be converted to a public sculpture garden and accessible to all park users. Historic sculptures located throughout the park would be relocated to this area and space is available for additional exhibits that may be permanent or temporary installations. This could also be an ideal space for a winter sculpture garden that could include special lighting and offer protection from the wind from the adjacent historic pool grandstands. This is also an ideal space to develop a "History of Island Park" or timeline of photos, postcards, and other historic imagery from Island Park.

### **Heritage Tree Preservation and Infill Area:**

Island Park is special because of the extensive tree canopy that has existed for generations. This area should be preserved, enhanced, and infilled with appropriate species that will perpetuate and improve the quality of tree canopy that exists today. Examples best suited for parks and public spaces include large deciduous and disease resistant species like Oaks, Elms, Black Walnut, Kentucky Coffeetree, Sugar Maple, Honeylocust and others with an upright high shade canopy. Longevity of growth rate should be prioritized in these areas.

### **Natural Play Area:**

Nature play is when children are provided with the opportunity to engage in unstructured play activities in outdoor settings where natural elements feature, such as logs, stumps, rocks and water, as opposed to conventional manufactured play equipment with plastic and other prefabricated or manufactured products.

### **Tennis and Pickleball Complex with Restrooms:**

Includes 3 tennis courts, 3 pickleball courts, and a new 4-season restroom facility to serve the courts as well as other park use in the south portion of Island Park including children and families using the natural play area.

### **Tennis Court Expansion:**

Includes converting existing parking to add an additional one (1) tennis court in this area and to accommodate a total of six (6) tennis courts total in Island Park to serve tournament and community use.



### **60 Stall Parking Lot:**

Includes a reconstruction of the existing parking lot to a one-way loop configuration with a center island to preserve trees in the middle of the existing parking lot. Total parking achieved is approximately 50 stalls including accessible parking spaces.

### **Bandstand / Gazebo Seating Area:**

Includes a paved space with improved accessible walkway for seating of small events like weddings, small concerts, or performances.

### **Indoor Art Gallery Space**

Includes preservation and reuse of the Katherine Kilbourne Burgum Pavilion added in 2011 and converted to a public indoor art space with changing exhibits throughout the year /seasons. Two building wings could be renovated and used to facilitate indoor classrooms and concessions for the adjacent outdoor open air amphitheater space (See #13).

### **Open Air Amphitheater at FMCT Site**

The sunken or recessed area where the FMCT building removal could be converted to an open-air amphitheater space of approximately 500 seats. A new stage of approximately 30'x40' is proposed at the southern end of the space. The recessed grade in this space and adjacent building wings create a protected environment from wind and noise from adjacent streets and park spaces. Existing heritage trees in this area provide additional comfort and shade for spectators and performers.

### **Pedestrian Underpass at 4th St.**

A pedestrian underpass under 4<sup>th</sup> St. would provide a safe pedestrian connection to Dike West as well as the riverfront trail system. Major events and programming at Island Park like the swimming pool would be connected to the greater community through access to the trail system and further encourage biking and walking to Island Park.

### **Relocate Basketball and Handball to Dike West**

In an effort to group similar active facilities and allow further passive recreation spaces in Island Park, the existing handball and basketball courts at the Scherling Complex could be relocated to Dike West in the approximate area shown.

### **Tree Impacts Based on this Layout:**

It is estimated that the following tree quantities would need to be removed to accommodate the pool location, parking facilities, and other modifications to the park: **52 Trees**



Following the presentation, the public was invited to review the concept options for more information and to solicit feedback on a variety of topics. The following pages summarize the input received at each of the displays. There were two (2) identical displays of boards at 30"x42" showing options 1 and 2 for general layout of major programmatic elements within Island Park. The attendees of the public meeting were asked to place a green sticker dot on the relationship diagram that they felt best represents the most ideal layout of the main program elements of the park.

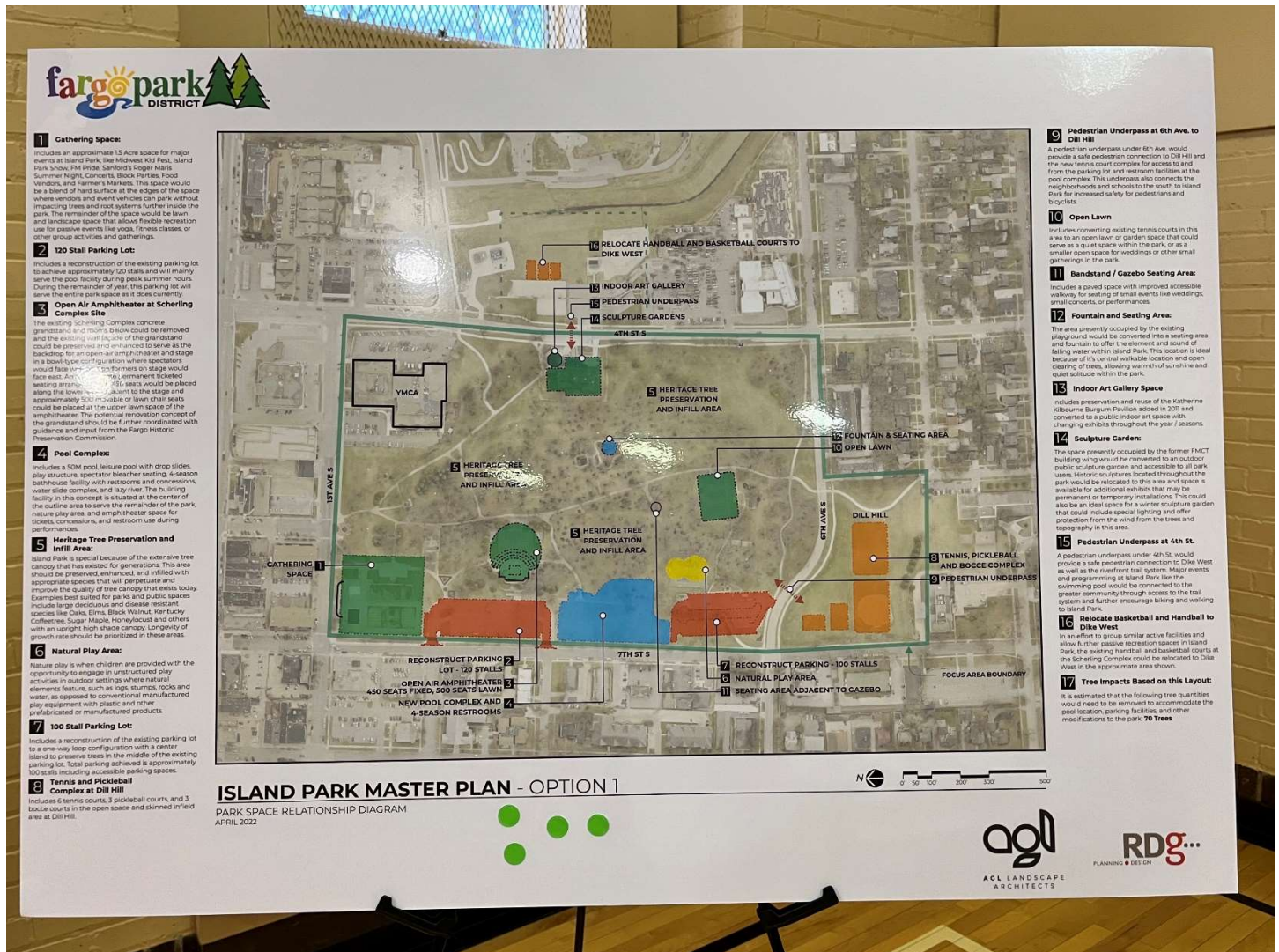


Figure 3 - Option 1 Board Display, Right Side of Gym – 4 Green Stickers



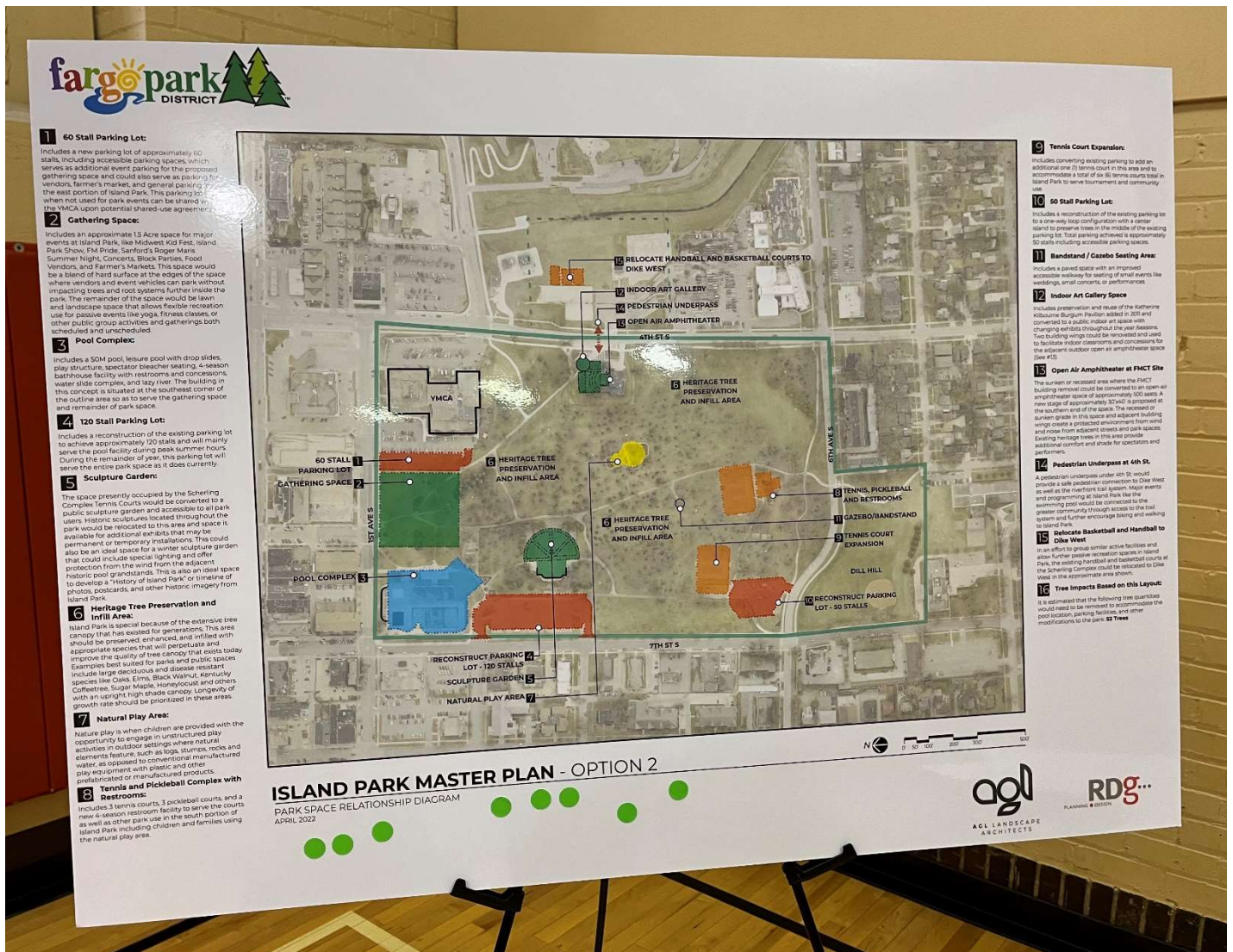


Figure 4 - Option 2 Board Display, Right Side of Gym – 8 Green Stickers









# 1 60 Stall Parking Lot:

Includes a new parking lot of approximately 60 stalls, including accessible parking spaces, which serves as additional event parking for the proposed gathering space and could also serve as parking for vendors, farmer's market, and general parking for when not used for park events can be shared with the YMCA upon potential transfer of use to the west.

## 2 Gathering Space:

Includes an approximate 1.5 Acre space for major events at Island Park, like Midwest Kiz Fest, Island Park Show, PM Ride, Sanborn's Roger Madsen Summer Night, Concerts, Block Parties, Food Vendors, and Farmer's Market. This space could be a blend of hard surface at the edge where vendors and event vehicles are parked, impacting trees and root systems, and landscape space that allows for use for passive events like yoga, fitness, and other public group activities and gatherings scheduled and unscheduled.

## 3 Pool Complex:

Includes a 50M pool, leisure pool with drop slides, play structure, spectator bleacher seating, 4-season bathroom facility with restrooms and concessions, water slide complex, and lazy river. The building in this concept is situated at the southeast corner of the outline area so as to serve the gathering space and remainder of park space.

## 4 120 Stall Parking Lot:

Includes a reconstruction of the existing parking lot to achieve approximately 120 stalls and will mainly serve the pool facility during peak summer hours. During the remainder of year this parking lot will serve the entire park space as it does currently.

## 5 Sculpture Garden:

The space presently occupied by the Scherling Complex Tennis Courts would be converted to a public sculpture garden and accessible to all park users. Historic sculptures located throughout the park would be relocated to this area and space is available for additional exhibits that may be permanent or temporary installations. This could include a dedicated space for a winter sculpture garden and could include special lighting and offer protection from the wind from the adjacent historic pool grandstands. This is also an ideal space to develop a history of Island Park or timeline of photos, postcards, and other historic imagery from Island Park.

## 6 Heritage Tree Preservation and Infill Area:

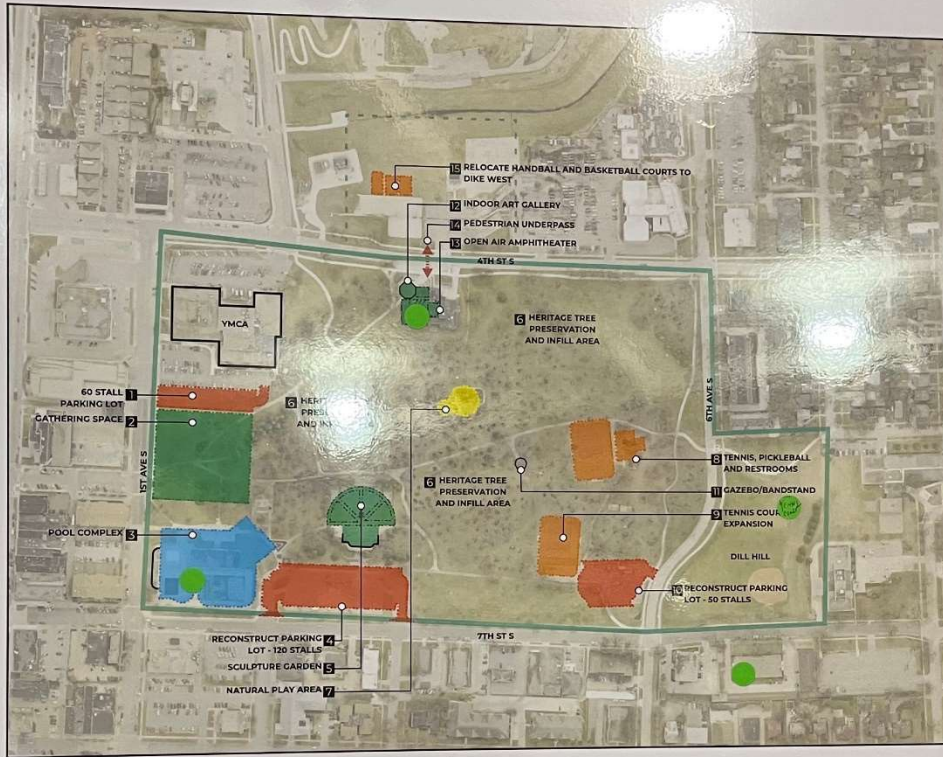
Island Park is special because of the extensive tree canopy that has existed for generations. This area should be preserved, enhanced, and infilled with appropriate species that will perpetuate and improve the quality of tree canopy that exists today. Examples best suited for parks and public spaces include large deciduous and disease resistant species like Oaks, Elms, Black Walnut, Kentucky Coffeetree, Sugar Maple, Honeylocust and others with an upright high shade canopy. Longevity of growth rate should be prioritized in these areas.

## 7 Natural Play Area:

Nature play is when children are provided with the opportunity to engage in unstructured play activities in outdoor settings where natural elements feature, such as logs, stumps, rocks and water, as opposed to conventional manufactured play equipment with plastic and other prefabricated or manufactured products.

## 8 Tennis and Pickleball Complex with Restrooms:

Includes 3 tennis courts, 3 pickleball courts, and a new 4-season restroom facility to serve the courts as well as other park use in the south portion of Island Park including children and families using the natural play area.



## 9 Tennis Court Expansion:

Includes converting existing parking to add an additional new 11 tennis court in the area and to accommodate a total of six (6) tennis courts total in Island Park to serve tournament and community use.

## 10 50 Stall Parking Lot:

Includes a reconstruction of the existing parking lot to a newway ramp configuration with a center island to preserve trees in the middle of the existing parking lot. Total parking achieved is approximately 50 stalls including accessible parking spaces.

## 11 Bandstand / Gazebo Seating Area:

Includes a paved space with an improved accessible walkway for seating of small events like weddings, small concerts, or performances.

## 12 Indoor Art Gallery Space:

Includes preservation and reuse of the existing existing Burgum Pavilion added in 2011 and converted to a public indoor art space with changing exhibits throughout the year seasons. Two building wings could be renovated and used to facilitate robot classrooms and concessions for the adjacent outdoor open air amphitheater space (see #3).

## 13 Open Air Amphitheater at FMCT Site:

The sunken or recessed area where the FMCT building removal could be converted to an open-air amphitheater space of approximately 500 seats. A new stage of approximately 30x40 is proposed in the southern end of the space. The recessed or sunken grade in this space and adjacent building wings create a protected environment from wind and noise from adjacent streets and park spaces. Existing heritage trees in this area provide additional comfort and shade for spectators and performers.

## 14 Pedestrian Underpass at 4th St:

A pedestrian underpass under 4th St. would provide a safe pedestrian connector to Dike West as well as the new trail system. Major events and programming at Island Park like the swimming pool would be connected to the greater community through access to the trail system and further encourage biking and walking around park.

## 15 Relocate Basketball and Handball to Dike West:

In an effort to group similar active facilities and allow further passive recreation spaces in Island Park, the existing handball and basketball courts at the Scherling Complex could be relocated to Dike West in the approximate area shown.

## 16 Tree Impacts Based on this Layout:

It is estimated that the following tree quantities would need to be removed to accommodate the pool location, parking facilities, and other modifications to the park. 52 Trees.

### ISLAND PARK MASTER PLAN - OPTION 2

PARK SPACE RELATIONSHIP DIAGRAM  
APRIL 2022



Figure 6 - Option 2 Board Display, Left Side of Gym – 9 Green Stickers





### **Summary of Verbal Public Comments Received:**

Natural Play – true unstructured natural play vs. natural play *looking* elements – playground features built of natural materials and earthtone colors.

Parking – several comments about no more added parking. Develop an agreement with neighboring landowners for shared use. Consider IP/Bell Bank Ramp, Prairie, School District Etc.

Memorials – FPD needs to develop a policy around how to manage future proposals for memorials within park spaces. The individual tree plantings no longer should be allowed and those that exist should be able to be decorated.

Trails / skate park – The skate community would like to keep the Scherling complex granite benches for future use in another proposed park. They are working with Fargo Parks to design and build another complex similar in magnitude to the Dike West park.

### **Tabletop Written Comments: ( as written, no corrections)**

- ❖ Don't move pool. Save trees. Plant oaks and spruce. No more parking!!!
- ❖ Stationary workout equipment. Better tennis bleachers and tables near tennis courts.
- ❖ Build the pool. Leave the rest of the park as is.
- ❖ No more parking spaces. Ones there are not utilized now.
- ❖ Respect the history of the park and trees.
- ❖ Hi, I am a lifelong (65 year) Fargo citizen. In the 1930s my father as a child collected coins to pay for concrete to build original pool (Scherling). I have also used Island Park my whole life. Considering it started in the 1800s please keep historic preservation important. Upon removal of spruce, consider Scotch pine for winter beauty. The idea of nature place space is ideal. The beautiful design of an underpass is nice. Why a sculpture garden? And please no modern art sculpture! Fountains are difficult, you know to consider maintenance. – Terrie Hart Dahl P.S. Amphitheater nice idea
- ❖ I like the gather space at the end of Broadway.
- ❖ I like the fountain at the middle of the park – replacing playground at center.
- ❖ Would love to see breakdown of trees being removed
- ❖ No waterslide at the pool please.
- ❖ Yes to natural playground, sculpture garden, walkway under 4<sup>th</sup>, garden/meadows, public bathrooms
- ❖ Save trees and don't move pool
- ❖ Save trees, do not move pool, plant oaks & black hills spruce, no more parking
- ❖ Trash cans need to be wind and squirrel proofed
- ❖ Keep memorial plaques and headstones out of the park
- ❖ More art in the park! Meh...art galleries
- ❖ I don't think expanding the Y lot is the best parking option.
- ❖ I feel underpasses would add safety issues where currently there are none.
- ❖ I like move tennis courts to Dill Hill.
- ❖ I think elements of both options would be best.
- ❖ No shade trees in Dill Hill or Dike West for tennis courts, basketball, etc. Could use water for kids at skate park.
- ❖ Do not remove any trees. Parking has not been an issue except for special activities such as Art in the Park.
- ❖ Seems like the busiest and noisiest activities are moving to the residential side of the park.



- ❖ Natural playground
- ❖ Basketball court in shaded area gets much more use than the full-size courts in Dike West...cuz shade.

**Summary of Sticker Dot Votes (Preferred Option)**

Option 1 – Pool in Central Location.....**11 Votes**

Option 2 – Pool Replaced in Existing Location.....**17 Votes**

*\* Not All Attendees Chose to Vote by Sticker Dot*

**End of Meeting Summary**

Attachments: Sign-In Sheet(s), PDF Copy of Slide Deck