

# **Rio Grande National Forest Planning Process**

## **A Look at the Road Ahead**



Thank you for taking this journey with us

Thank you for taking this journey with us

**Why is the Rio Grande seeking your participation?**

Forest planning regulations require every National Forest to:

"...engage the public early and throughout the planning process in an open and transparent way, providing opportunities for meaningful public participation in inform all stages of planning."

**Why should you care?**

- Interest in future Rio Grande management
- Desire for meaningful involvement in the process

# Rio Grande National Forest Planning Process

## A Look at the Road Ahead

## *Why should you care?*

- Interest in future Rio Grande management
- Desire for meaningful involvement in the process





# *Why is the Rio Grande seeking your participation?*

Your unique perspectives and ideas are valuable to everyone involved in the forest planning process.

# *Why is the Rio Grande seeking your participation?*

Forest planning regulations require every National Forest to:

"...**engage the public** early and throughout the planning process **in an open and transparent way**, providing opportunities for **meaningful public participation** to inform all stages of planning."

# *How will your participation be useful to the planning process?*

- Help **determine the scope** of the forest planning process
- Provide the Forest with **new information** to consider
- Clarify the **needs, values, and interests** of citizens in the San Luis Valley, now and into the future



# *How will you stay informed?*

We will let you know when meetings will be held, what topics will be addressed, and how you can stay involved.

<http://riograndeplanning.mindmixer.com>

Visit our site to check out interactive features and frequent updates!

# *What can you expect in the next month?*

- Four public meetings to kick off the forest planning process around the San Luis Valley
- Launch of an interactive, up-to-date website with meeting information, discussion boards, and helpful resources



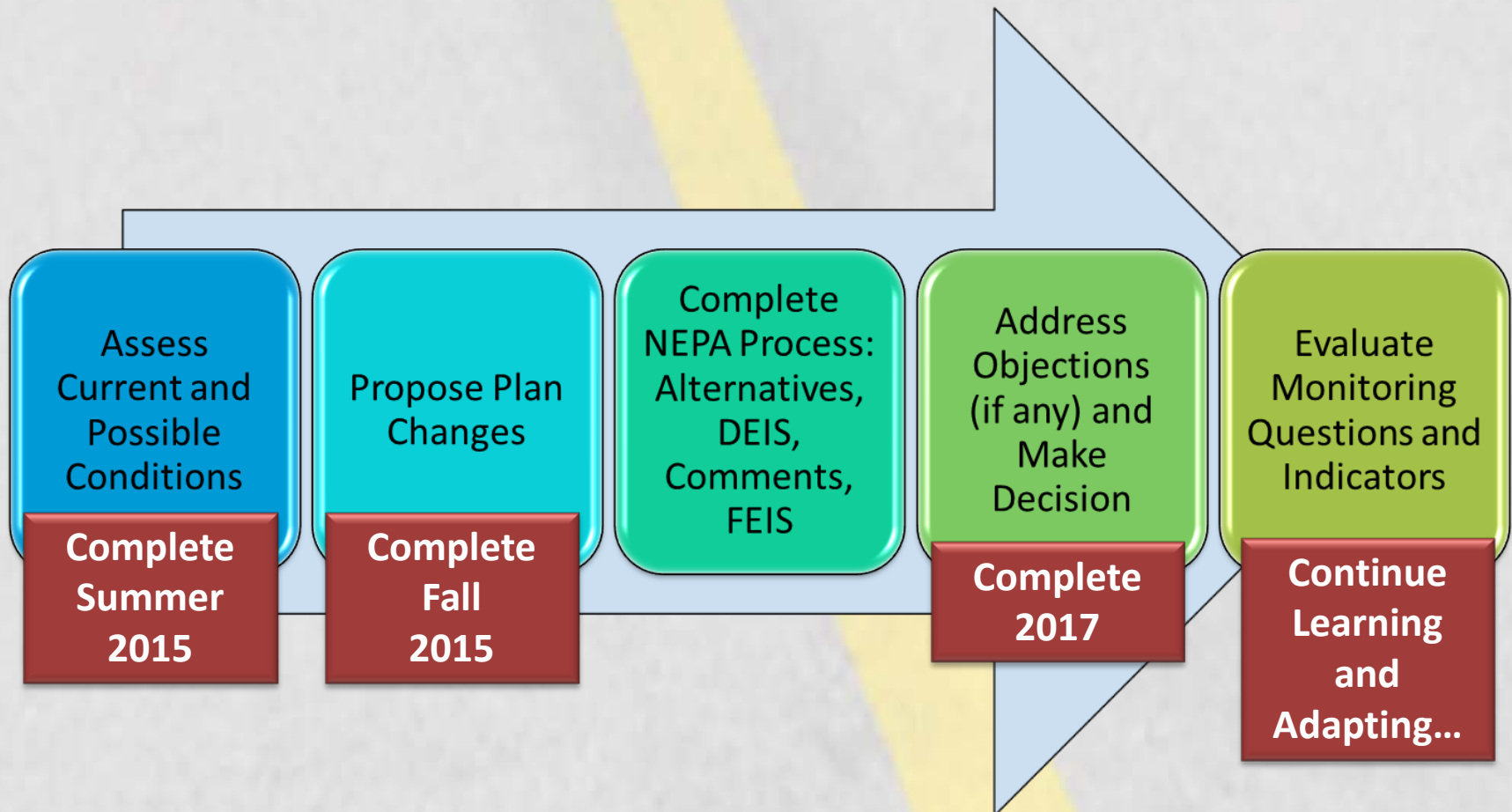
# *What can you expect over the coming year?*

- We want your help deciding how **specific geographic areas** within the Rio Grande should be managed.
- We also want to learn how you feel about specific **forest management issues**.

# *What can you expect over the coming year?*

- Additional meetings focused on these topics
- Meetings co-hosted by local organizations
- Please sign up to co-host a meeting

# *What is the overall timeline for this process?*





# *Who should you contact with questions about the Rio Grande National Forest planning process?*

**Marcus Selig**, National Forest Foundation  
(720) 437-0290 | [mseelig@nationalforests.org](mailto:mseelig@nationalforests.org)

**Mike Blakeman**, Rio Grande National Forest  
(719) 852-6212 | [mblakeman@fs.fed.us](mailto:mblakeman@fs.fed.us)

Thank you for  
taking this  
journey with us!

