

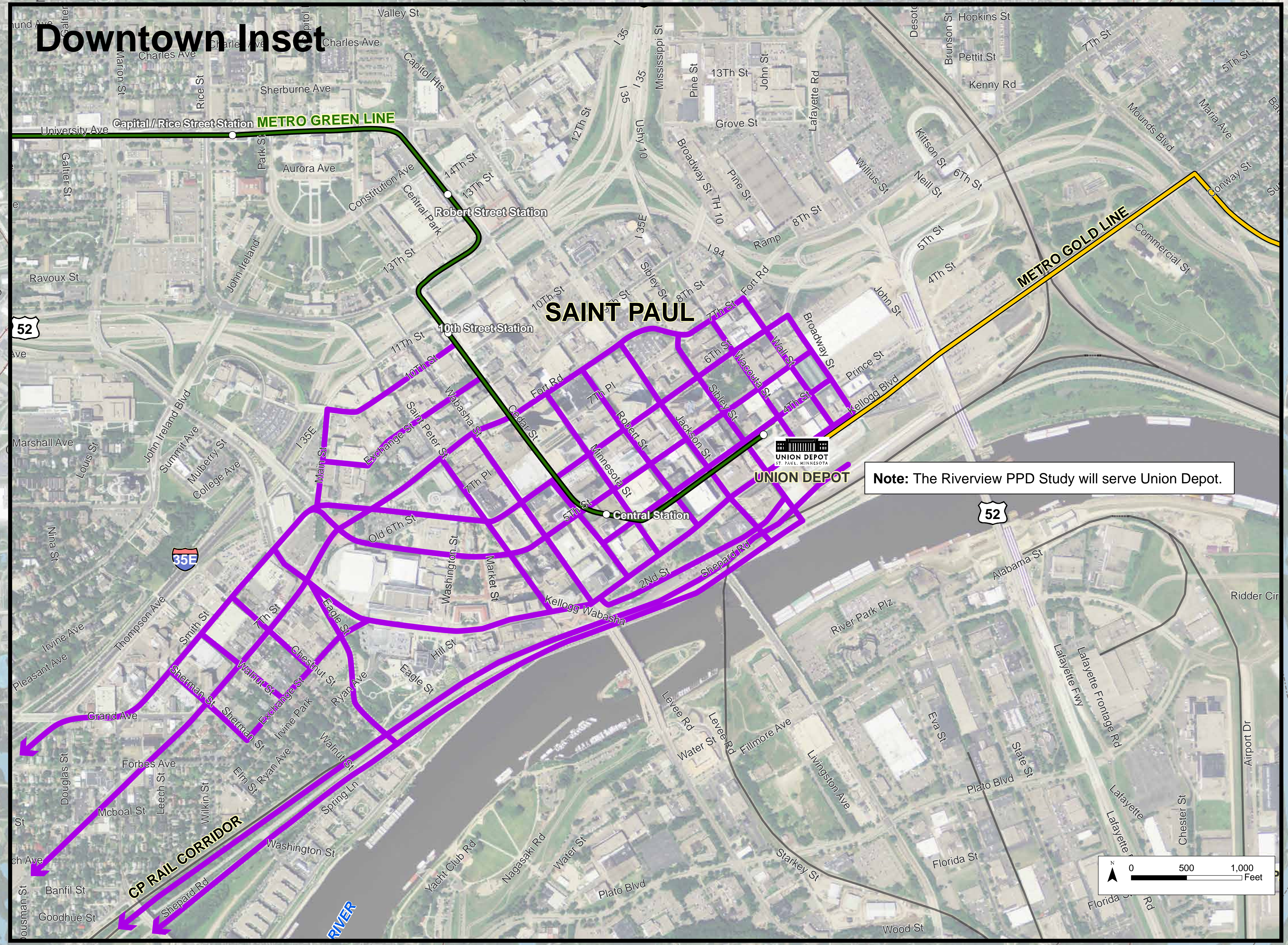
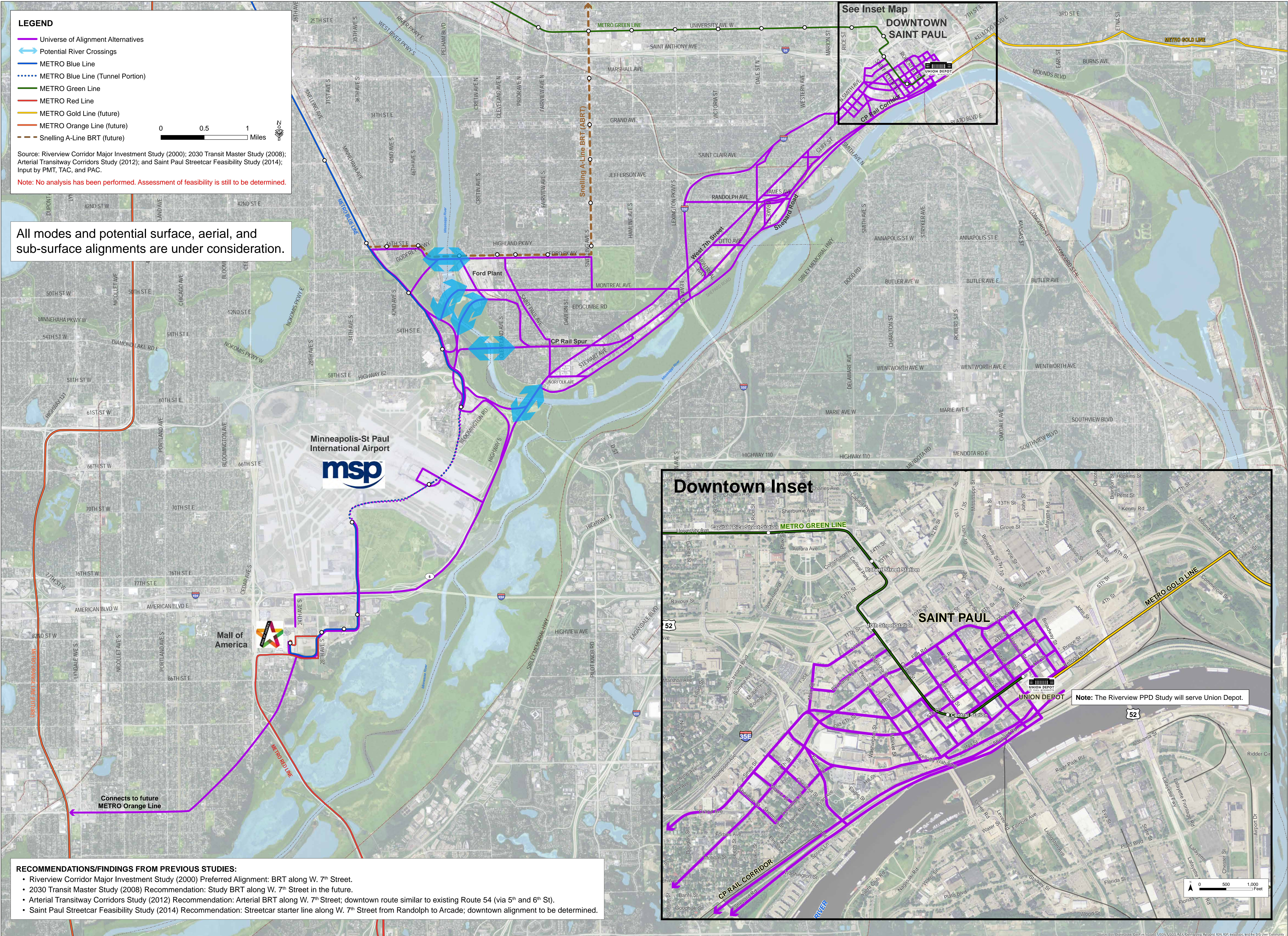
LEGEND

- Universe of Alignment Alternatives
- Potential River Crossings
- METRO Blue Line
- METRO Blue Line (Tunnel Portion)
- METRO Green Line
- METRO Red Line
- METRO Gold Line (future)
- METRO Orange Line (future)
- Snelling A-Line BRT (ABRT) (future)

Source: Riverview Corridor Major Investment Study (2000); 2030 Transit Master Study (2008); Arterial Transitway Corridors Study (2012); and Saint Paul Streetcar Feasibility Study (2014); Input by PMT, TAC, and PAC.

Note: No analysis has been performed. Assessment of feasibility is still to be determined.

All modes and potential surface, aerial, and sub-surface alignments are under consideration.



- RECOMMENDATIONS/FINDINGS FROM PREVIOUS STUDIES:**
- Riverview Corridor Major Investment Study (2000) Preferred Alignment: BRT along W. 7th Street.
 - 2030 Transit Master Study (2008) Recommendation: Study BRT along W. 7th Street in the future.
 - Arterial Transitway Corridors Study (2012) Recommendation: Arterial BRT along W. 7th Street; downtown route similar to existing Route 54 (via 5th and 6th St).
 - Saint Paul Streetcar Feasibility Study (2014) Recommendation: Streetcar starter line along W. 7th Street from Randolph to Arcade; downtown alignment to be determined.

