

City of Rockford NEW MULTI-MODAL STATION

Community Engagement Meeting #2

November 20, 2014

LEGATARCHITECTS



AGENDA

Introductions

Purpose of This Meeting / Questionnaires

Project Schedule

Survey Results – Public Engagement Meeting #1

Project Parameters

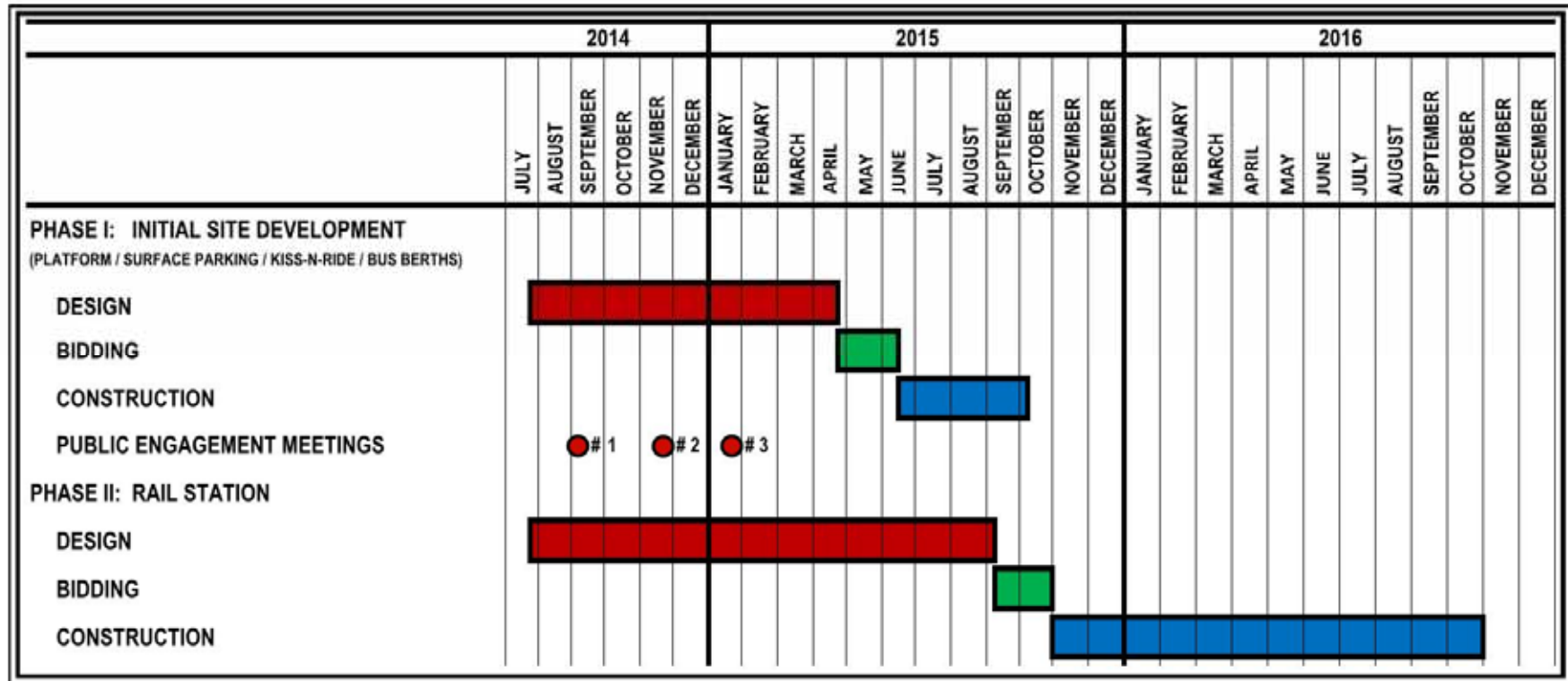
Collaborative Design Session

Design Concepts

Questions and Answers / Public Survey Form

Next Steps

PROJECT SCHEDULE

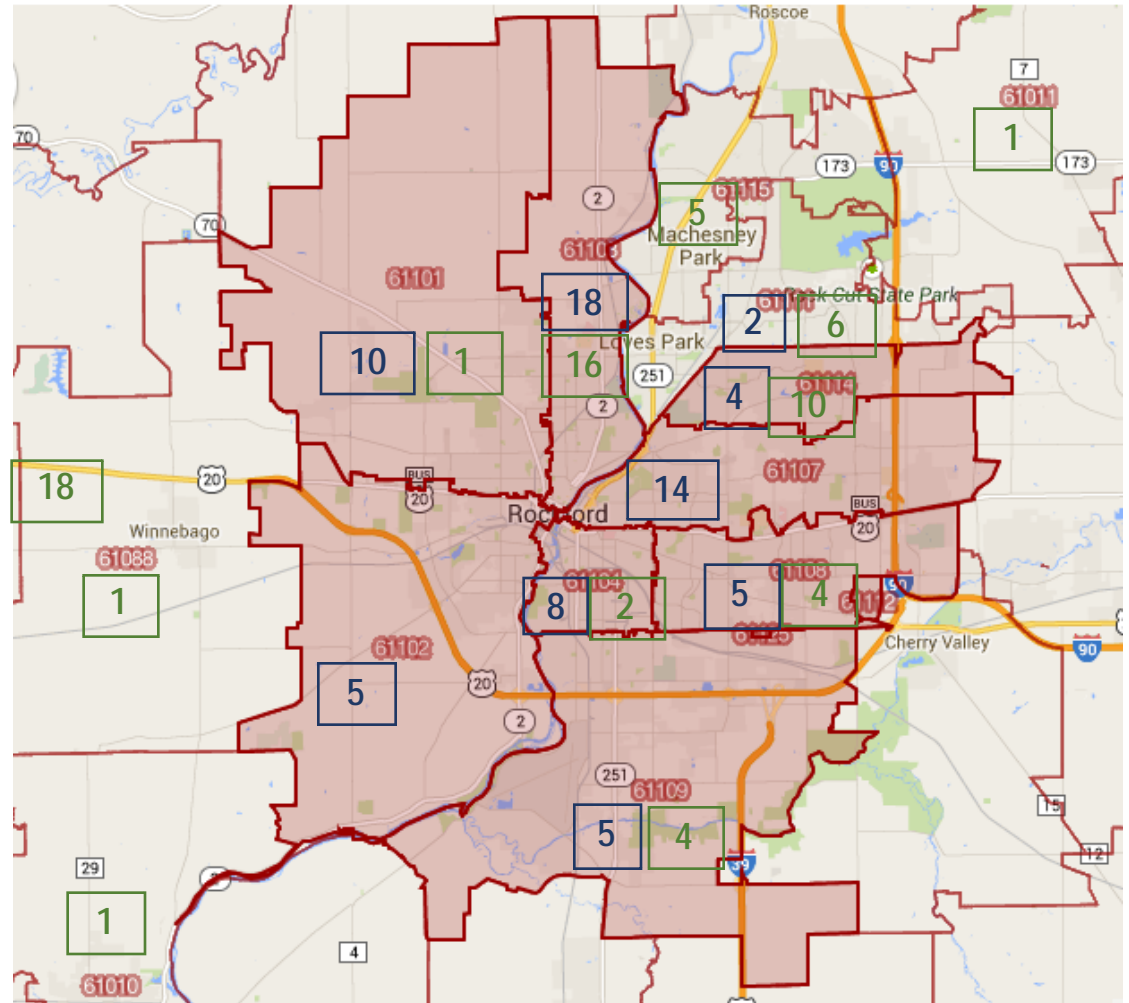


SURVEY RESULTS



Community Participation

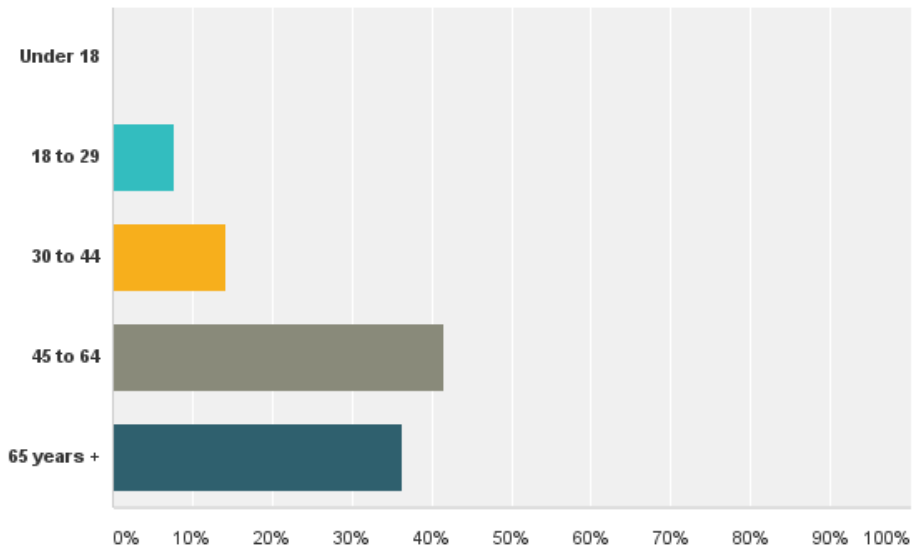
- 79 completed surveys from Input Session
- 94 Surveys completed online
- Participants from throughout Rockford area



Age of Participants

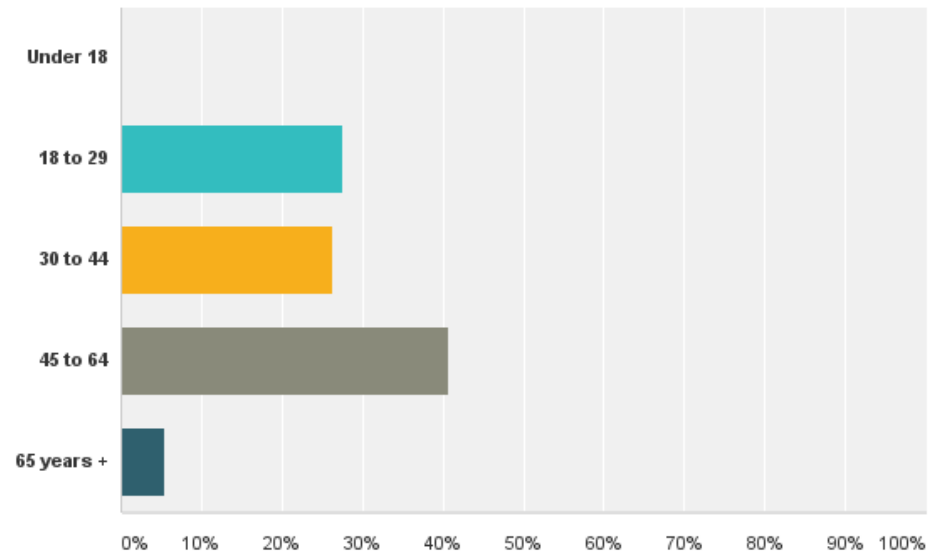
Input Session

Answered: 77 Skipped: 2



Online

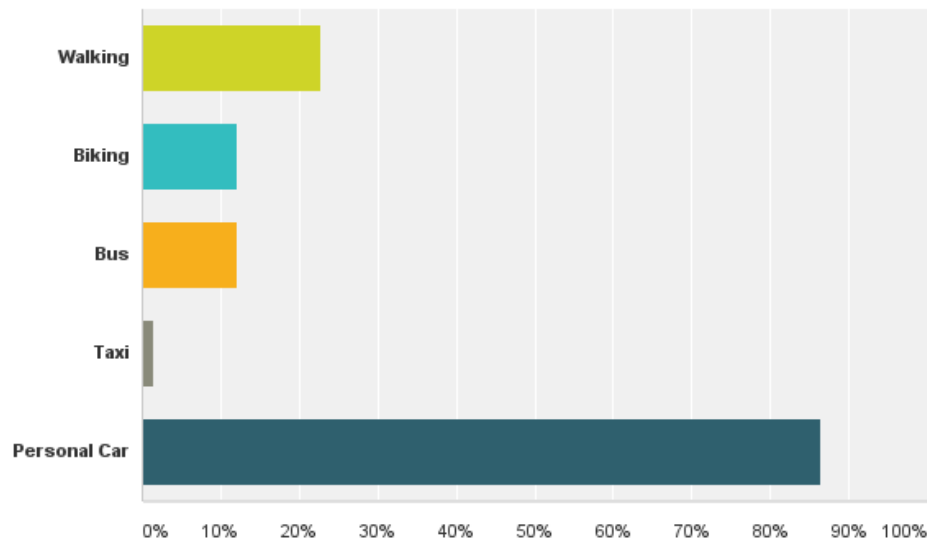
Answered: 91 Skipped: 3



Access to Station

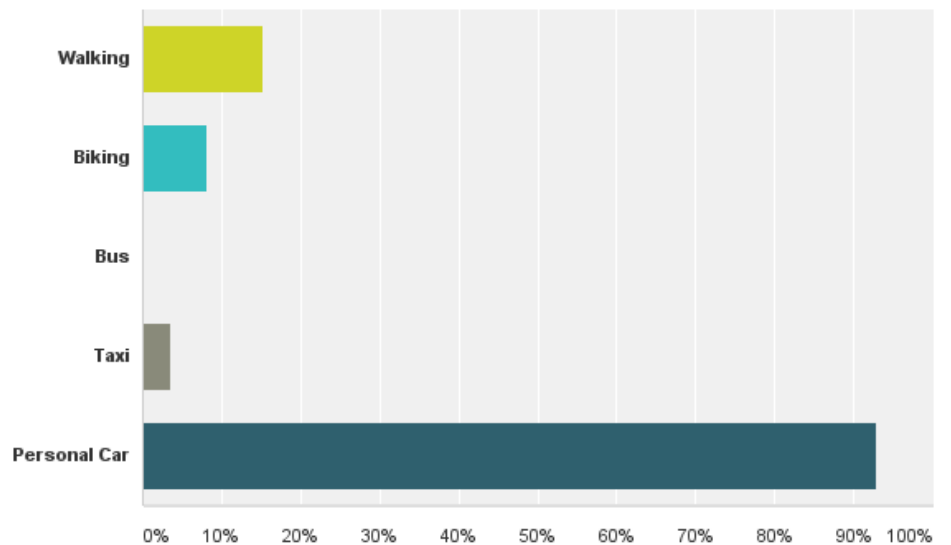
Input Session

Answered: 66 Skipped: 13



Online

Answered: 85 Skipped: 9



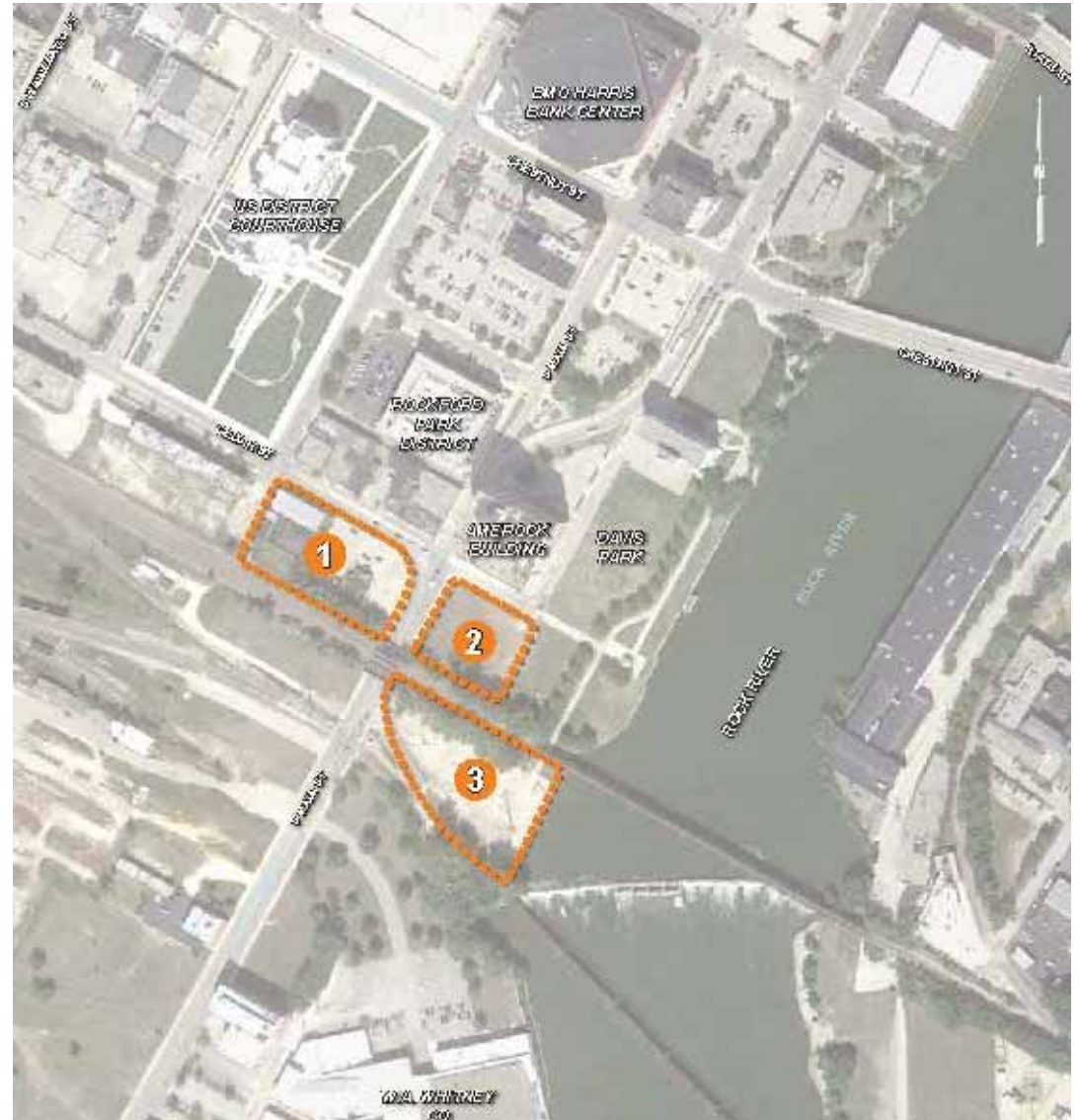
Preferred Location

Input Session

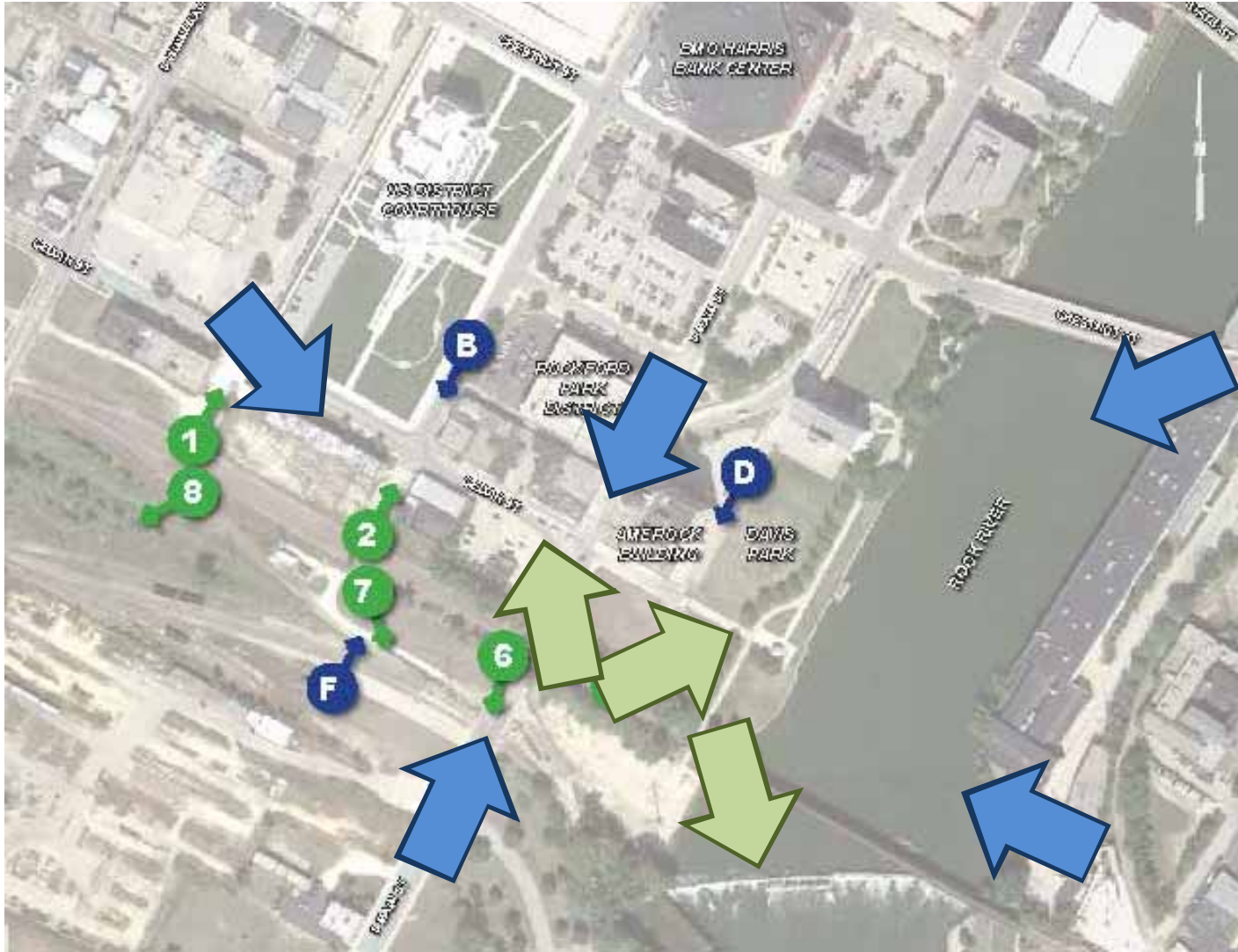
- | | | |
|----|----------|-------|
| 1. | 25 votes | 52.1% |
| 2. | 19 votes | 39.6% |
| 3. | 4 votes | 8.3% |

Online

- | | | |
|----|----------|-------|
| 1. | 34 votes | 43.6% |
| 2. | 16 votes | 20.5% |
| 3. | 28 votes | 35.9% |



Key Views



Preferred Station Character



LEGATARCHITECTS

sustainability performance design

Least Preferred Station Character



Suggested Amenities

- General Amenities

- Public restroom
- Information area/kiosk
- Wireless internet access
- Docking/charging stations
- Outdoor public space
- Security
- CVB office/presence

- Food/Shopping

- Snack bar
- Newspaper/media stand
- Shop with locally produced agriculture
- Dry cleaner
- Kennel
- Souvenir shop (with local products)
- ATMs
- Food court
- Deli
- Wine shop/bar

- Special Amenities

- Art gallery of local artists
- Meeting space
- Banquet/wedding space
- Mini train museum – tied to Rockford history

- Access/Connectivity

- Cab stand
- Directional map aimed at pedestrians
- Bus depot – local & regional
- Transportation connections to Rockford Airport
- Access to future festival grounds
- Water taxi connection
- Watercraft rental
- Travel agency
- Car rentals
- Secure parking
- Secure bike racks (overnight/long-term storage)
- Car-share (I-GO or Zipcar) and/or bike-share (Divvy) station
- Shuttles to East State Street hotels

Key Issues

1. Parking
2. Drop-off Area
3. Architecture
4. Pedestrian Access
5. Sustainable Design
6. Landscape
7. Multi-modal Support
8. Integration of Bus Service
9. Community Feature/Gathering Space

PROJECT PARAMETERS

The background of the slide is a photograph of a river scene. In the foreground, there's a concrete walkway or bridge structure. In the middle ground, a large bridge spans the river. The background shows a line of trees and a clear sky. The entire image has a blue color overlay.

Train Station

Circulation

Toilet Rooms

Concierge Service

300 Car Parking Garage

Connectivity to the Hotel

Commercial / Retail Space

Bus Berths

Kiss n Ride

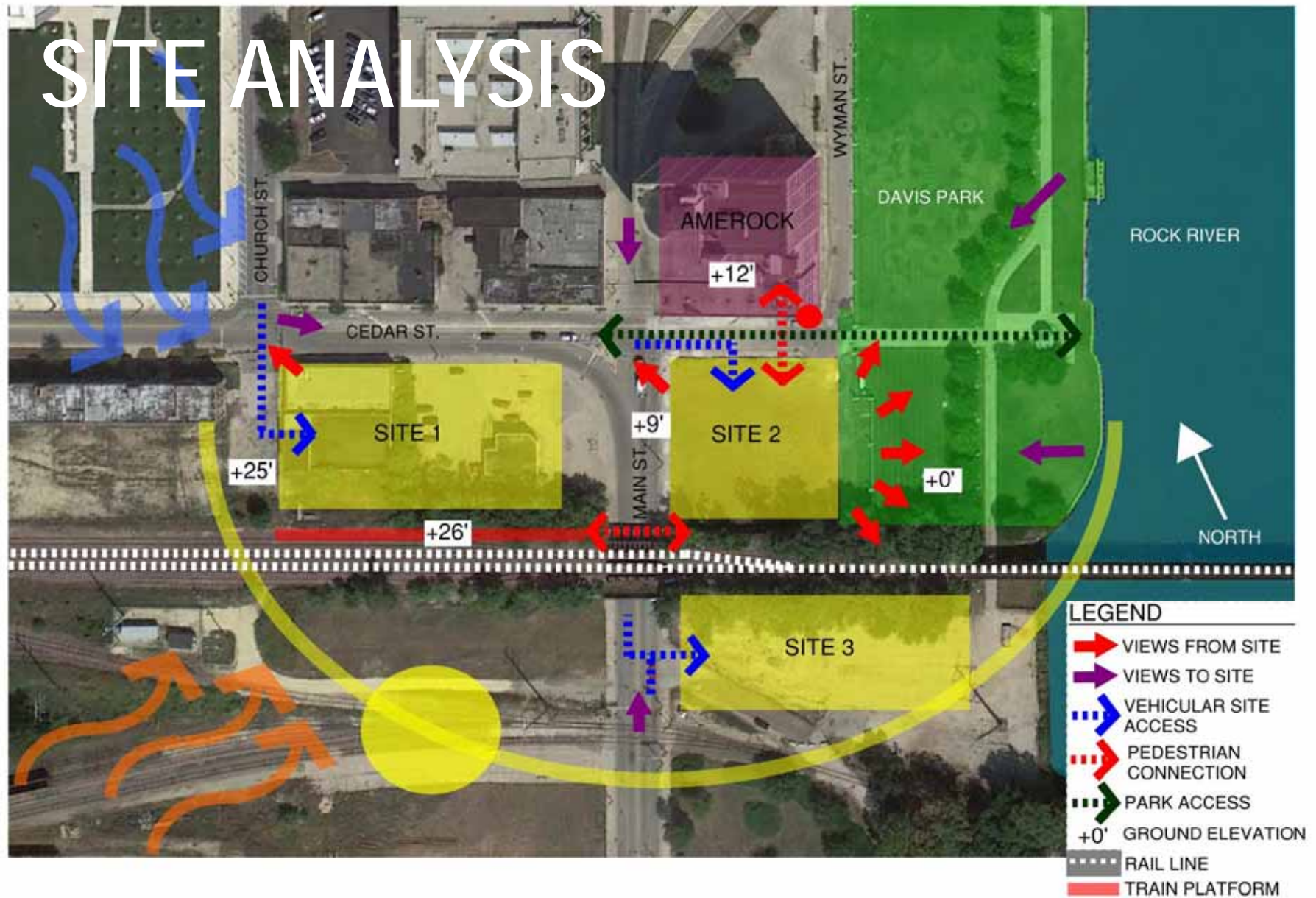
Site Amenities

SITE LOCATION

This aerial photograph shows the site location in Rock Hill, South Carolina. The site is outlined in red and is situated between the Rock River and the city center. The map includes a scale bar (1 inch = 100 feet) and a north arrow.

sustainability performance design

SITE ANALYSIS



Site Photos

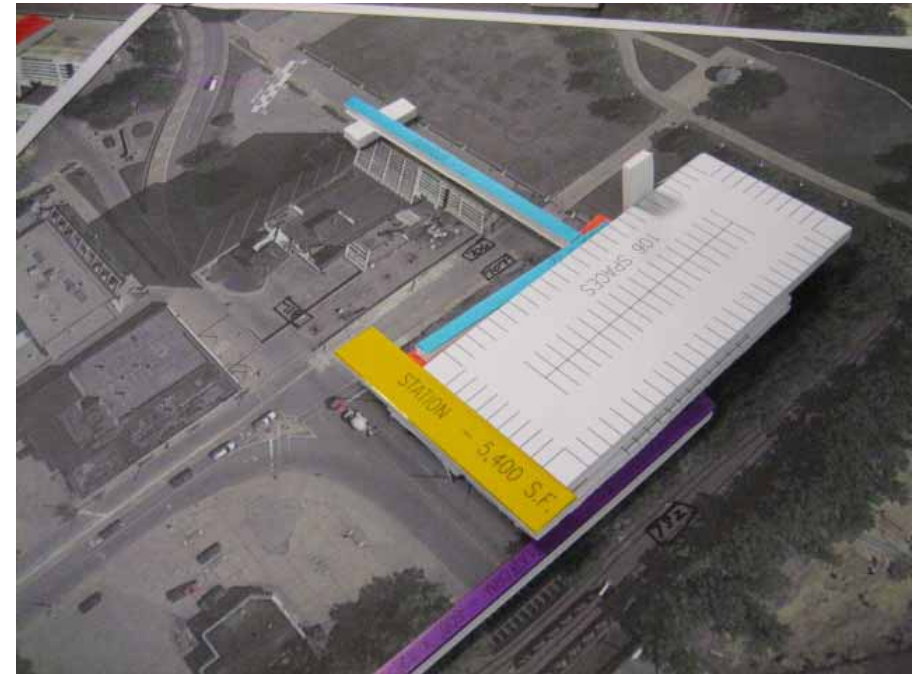




COLLABORATIVE DESIGN SESSION

LEGATARCHITECTS

sustainability performance design





DESIGN CONCEPTS

LEGATARCHITECTS

sustainability performance design

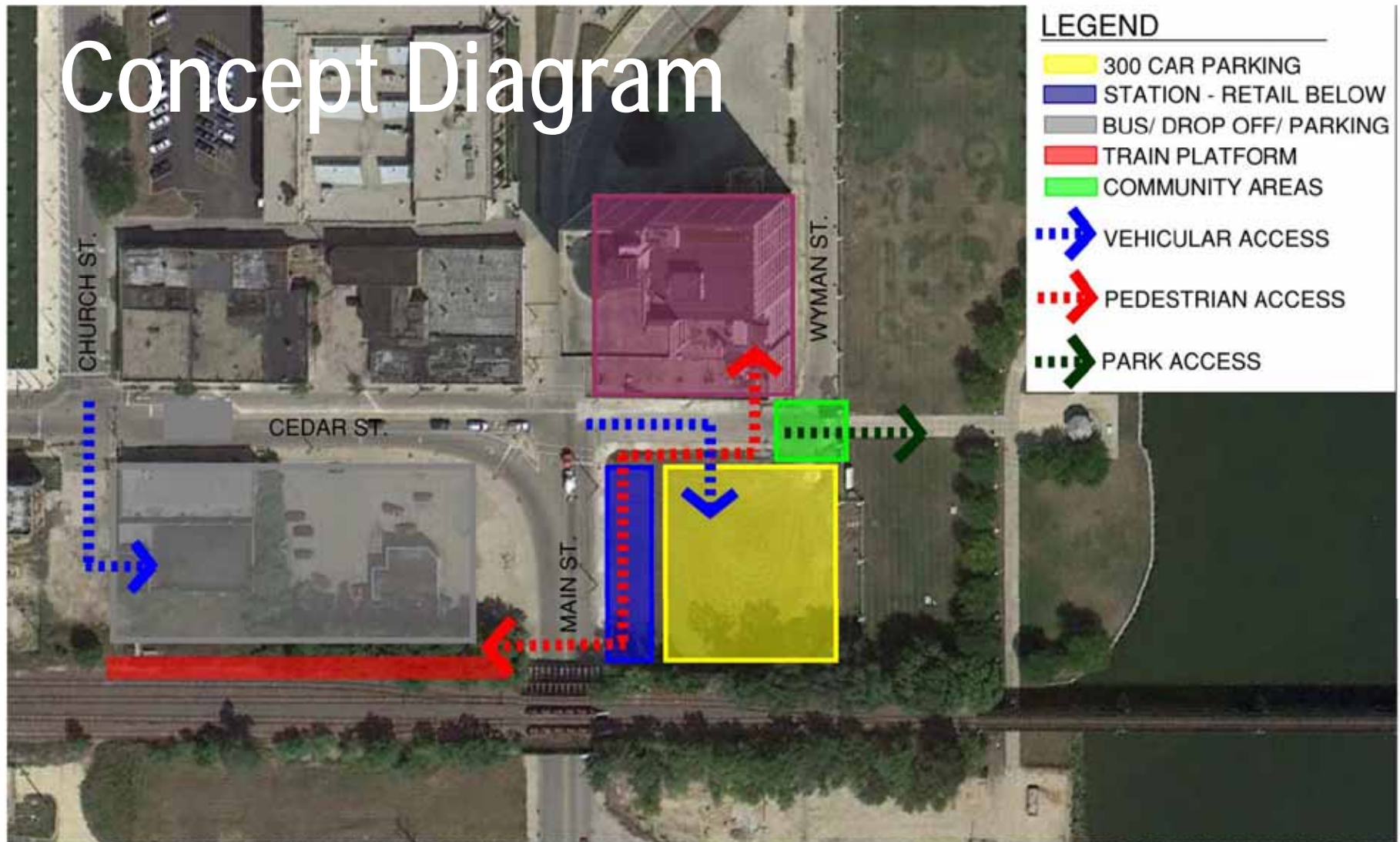
Urban Concept



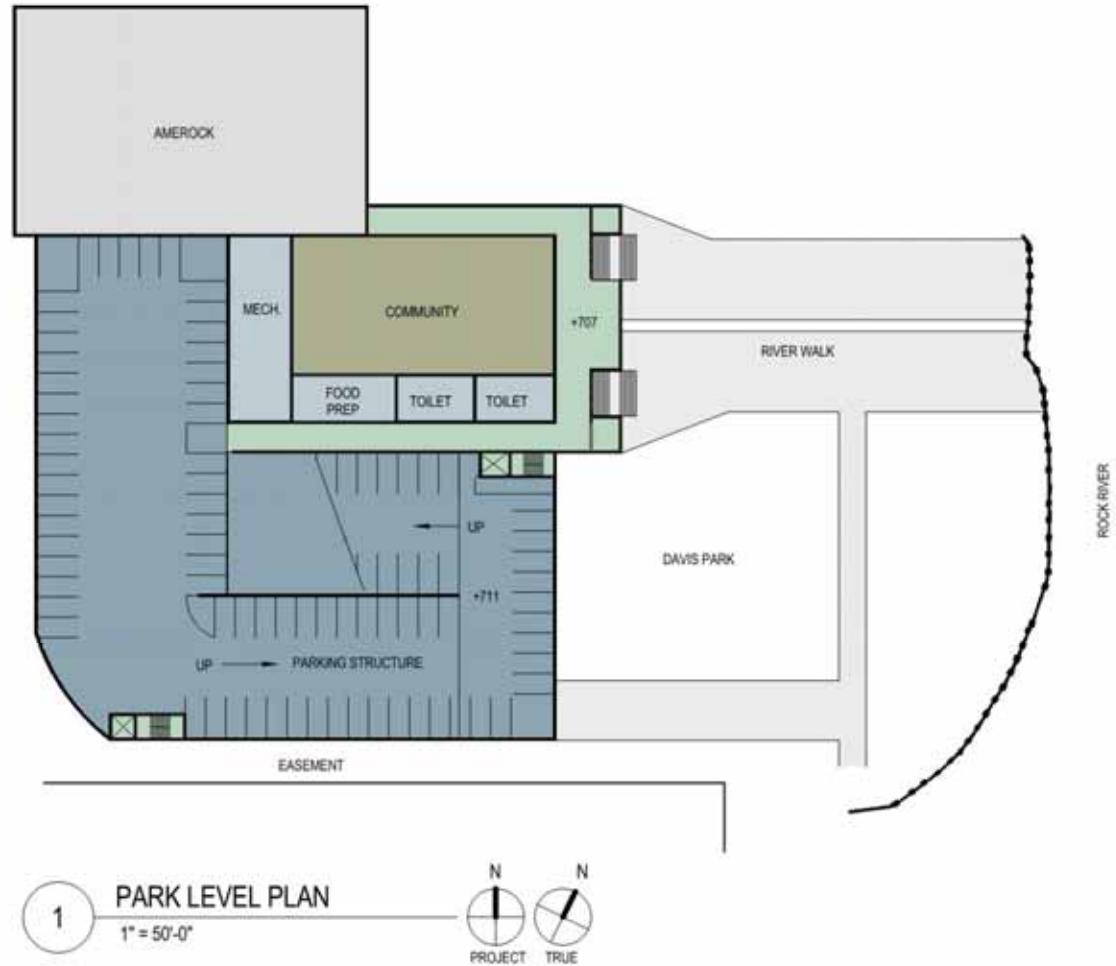
LEGATARCHITECTS

sustainability performance design

Concept Diagram

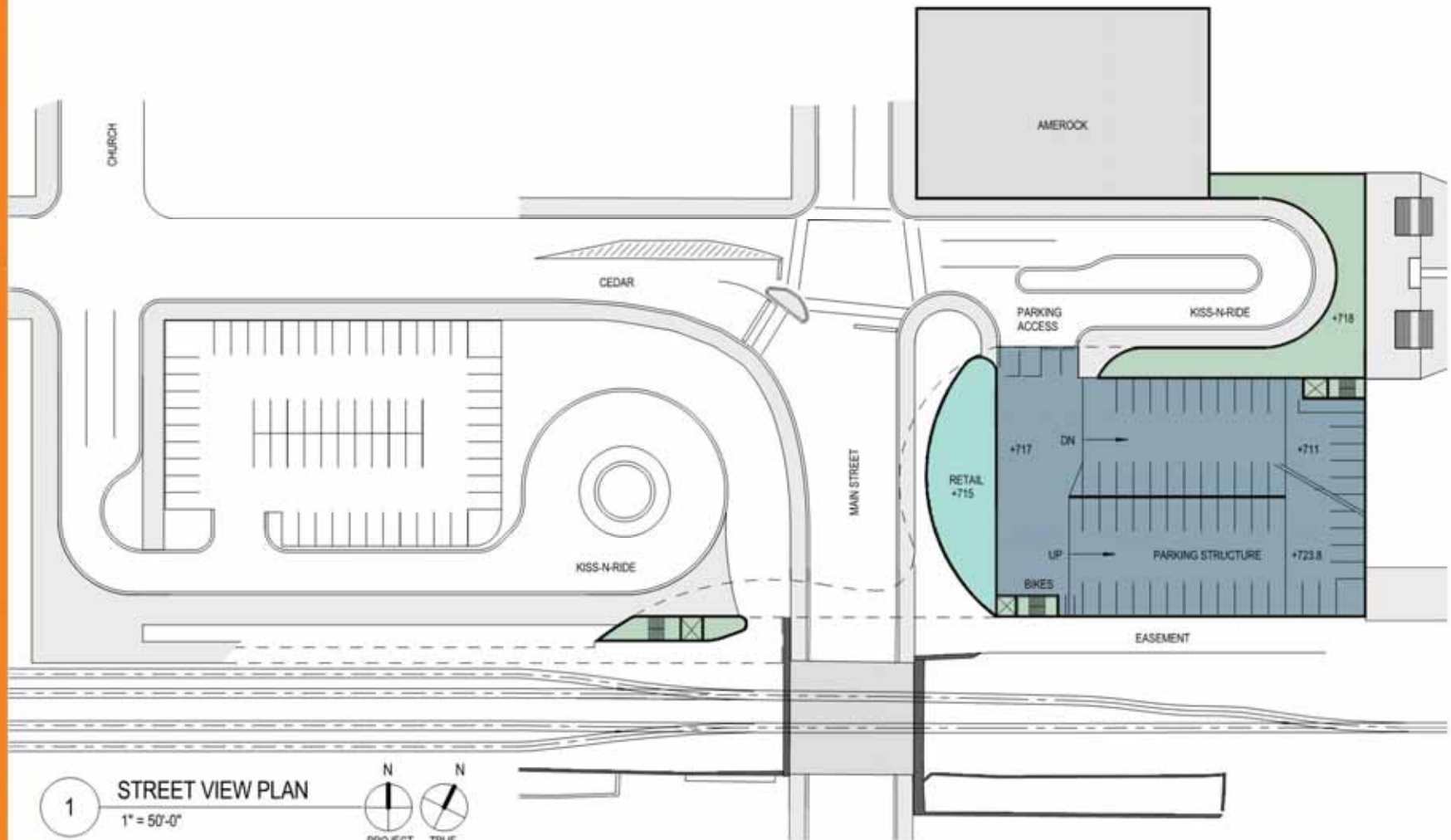


11.03.2014
Rockford, IL



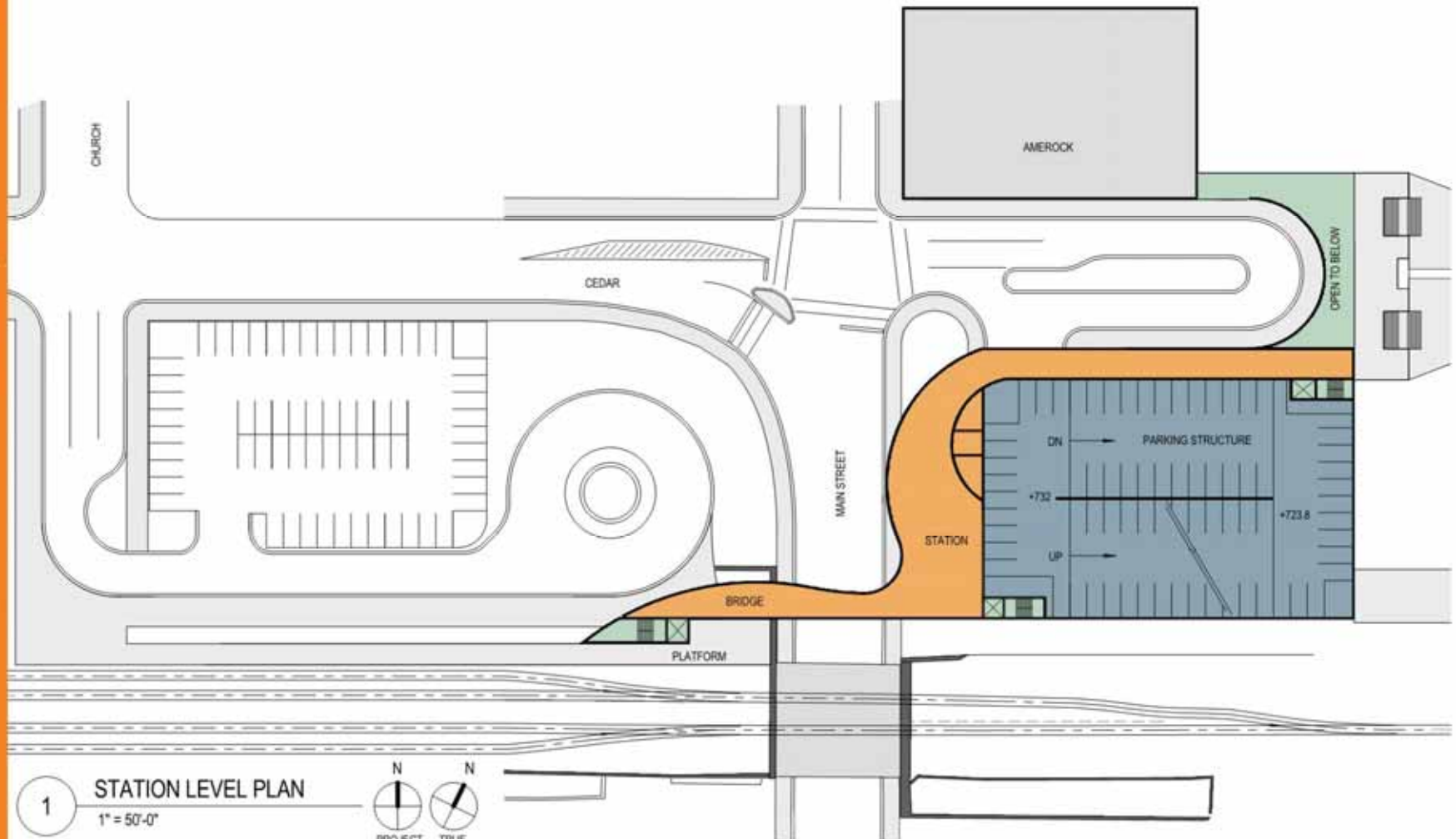
11.03.2014

Rockford, IL



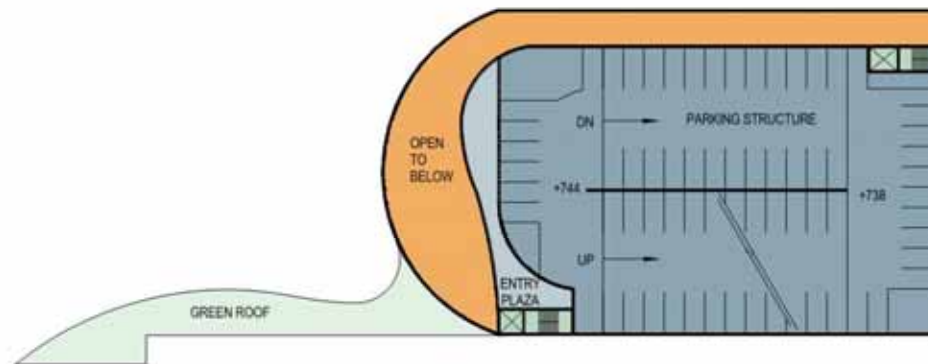
11.03.2014

Rockford, IL

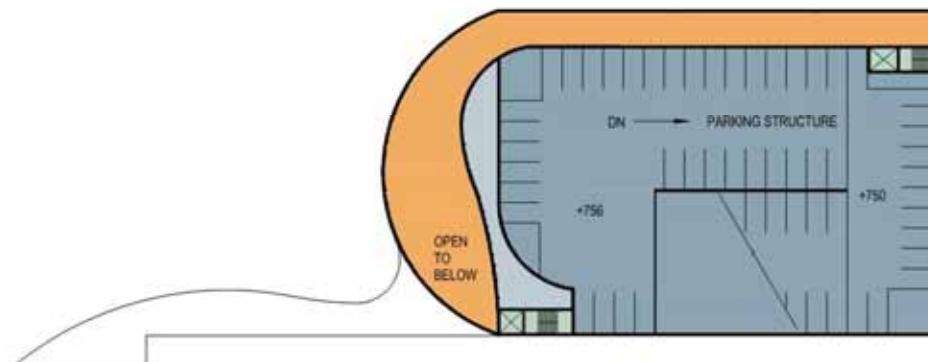
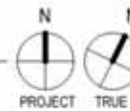


11.03.2014

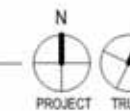
Rockford, IL

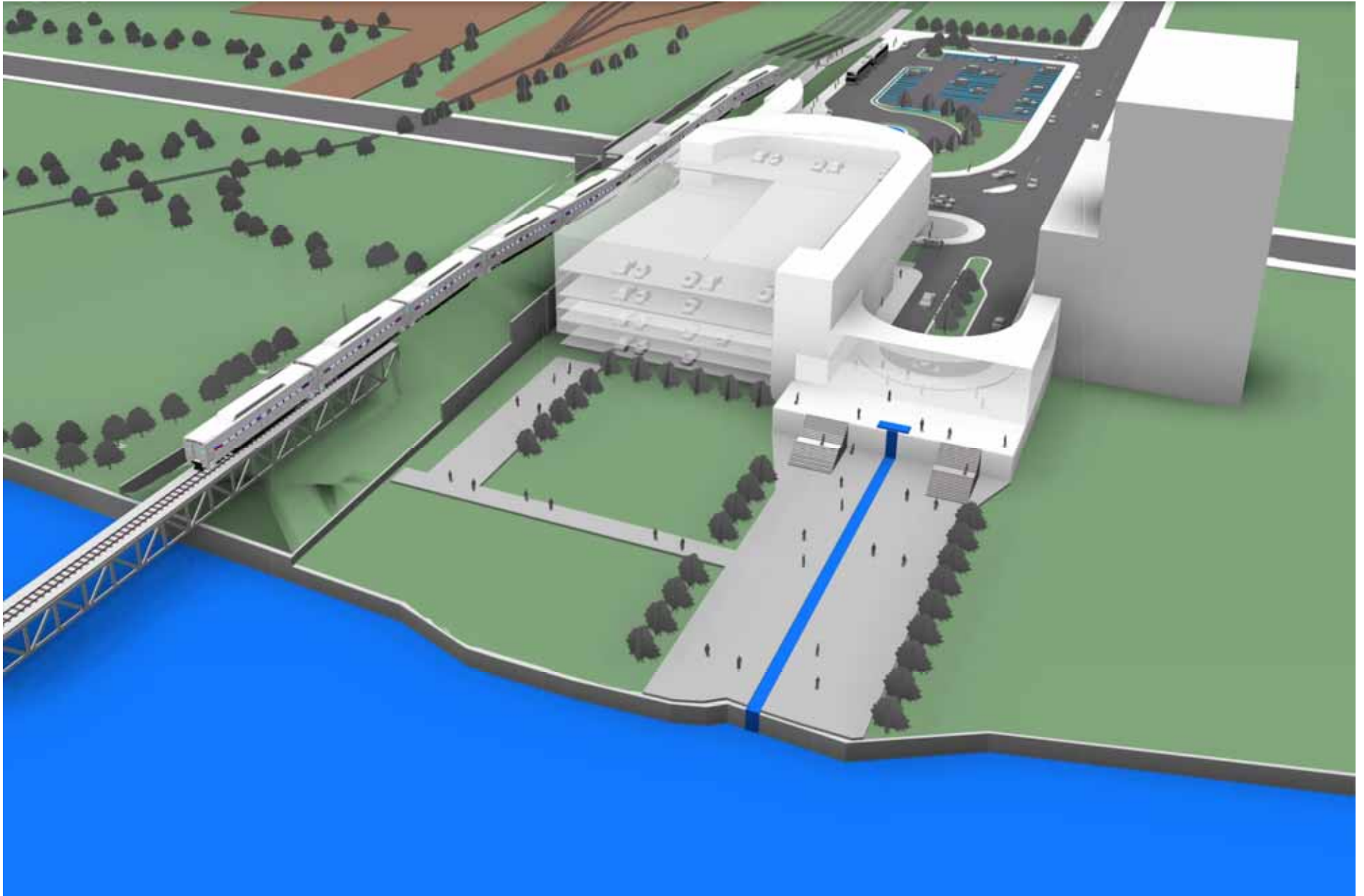


1 PARKING DECK PLAN LEVEL 4
1" = 50'-0"



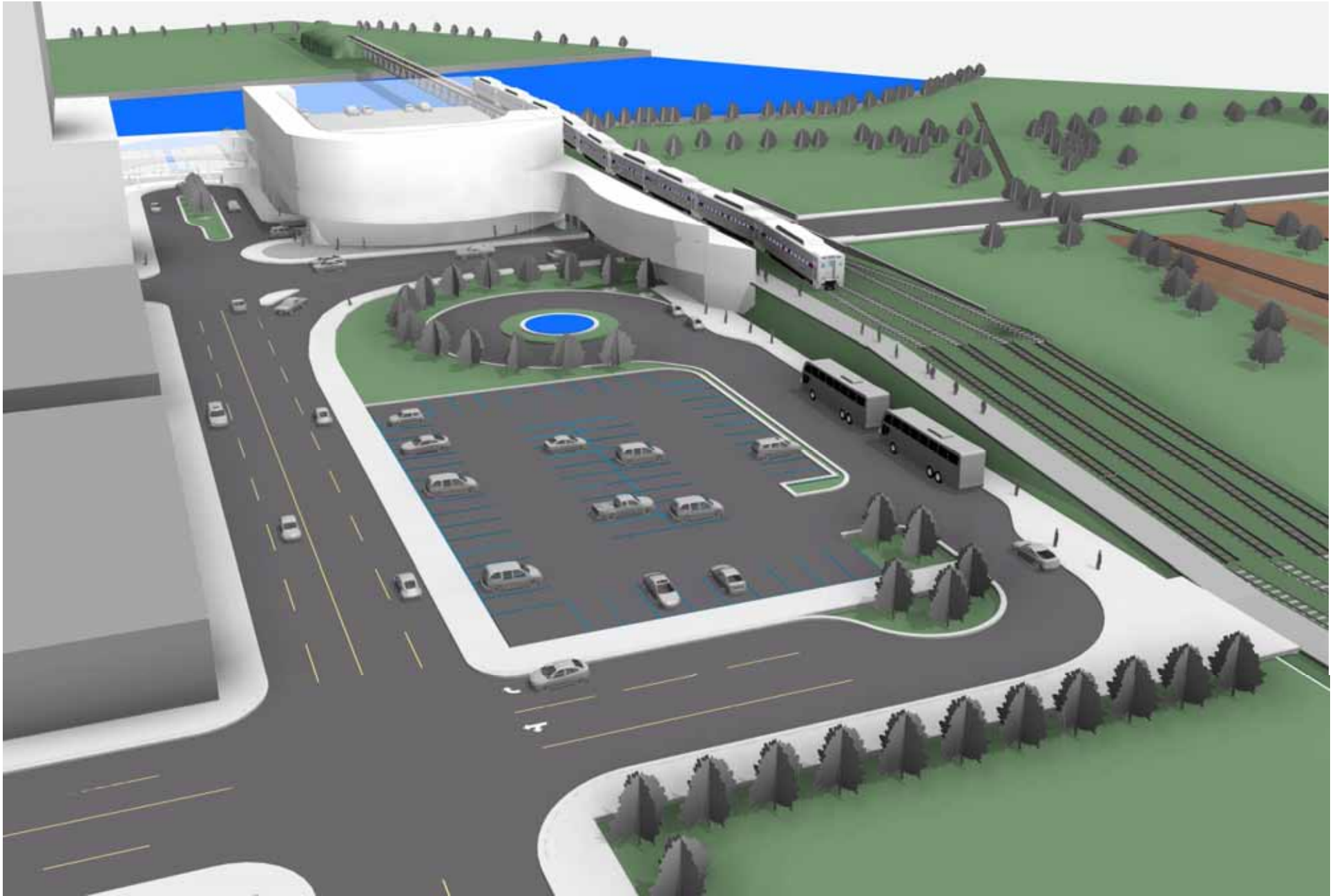
2 PARKING DECK PLAN LEVEL 5
1" = 50'-0"





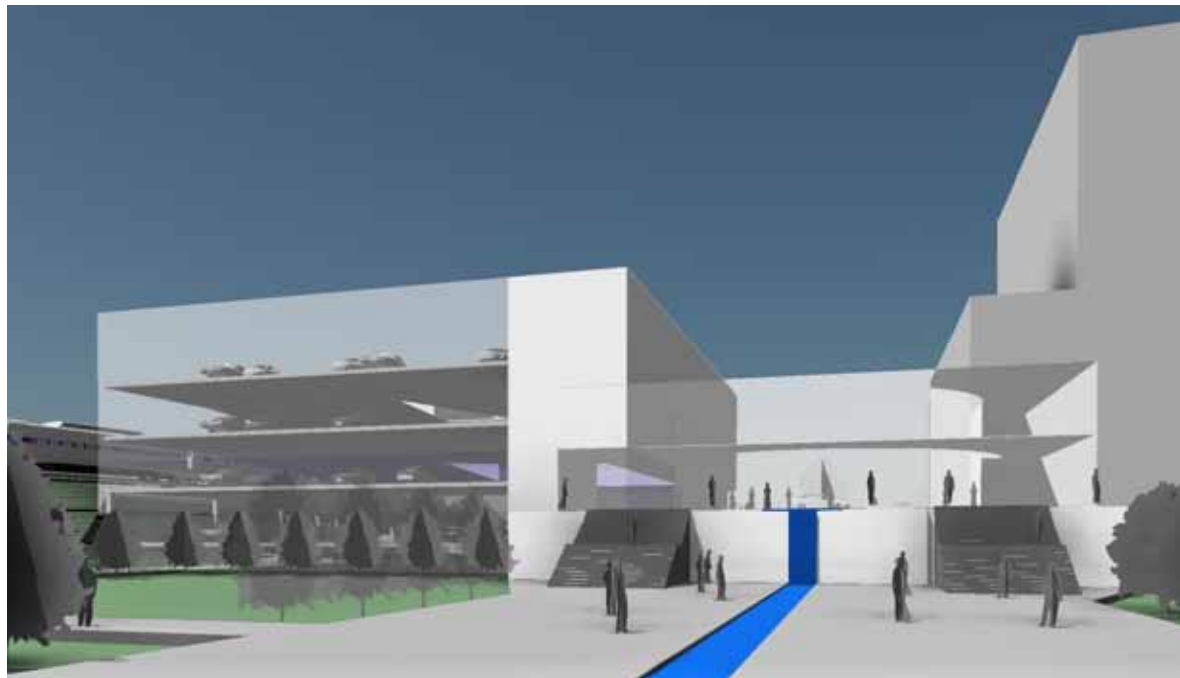
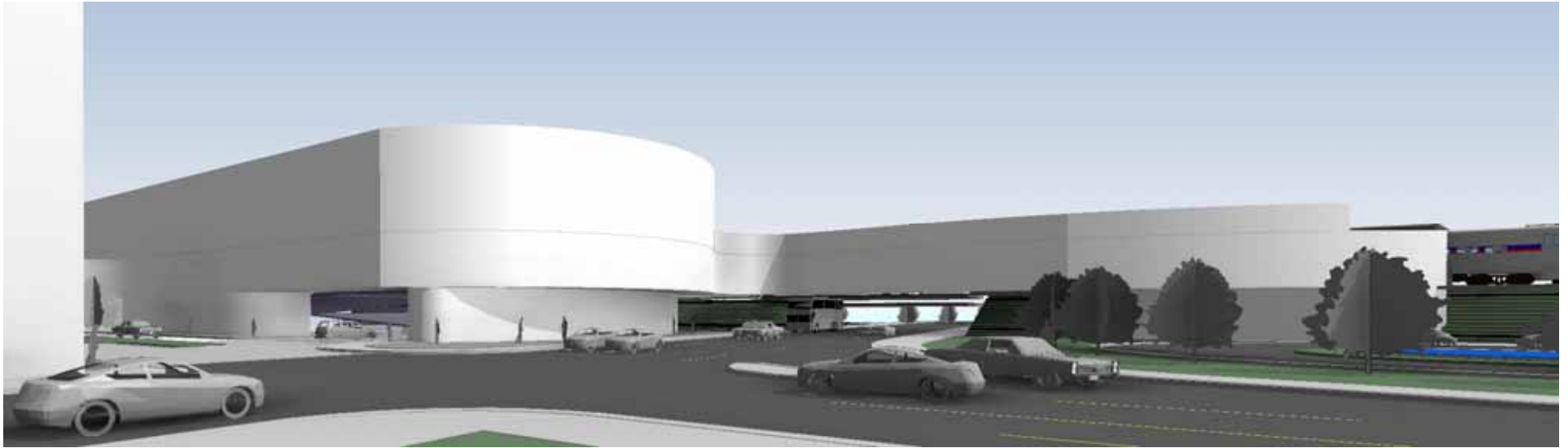
LEGATARCHITECTS

sustainability performance design



LEGATARCHITECTS

sustainability performance design



LEGATARCHITECTS

sustainability performance design

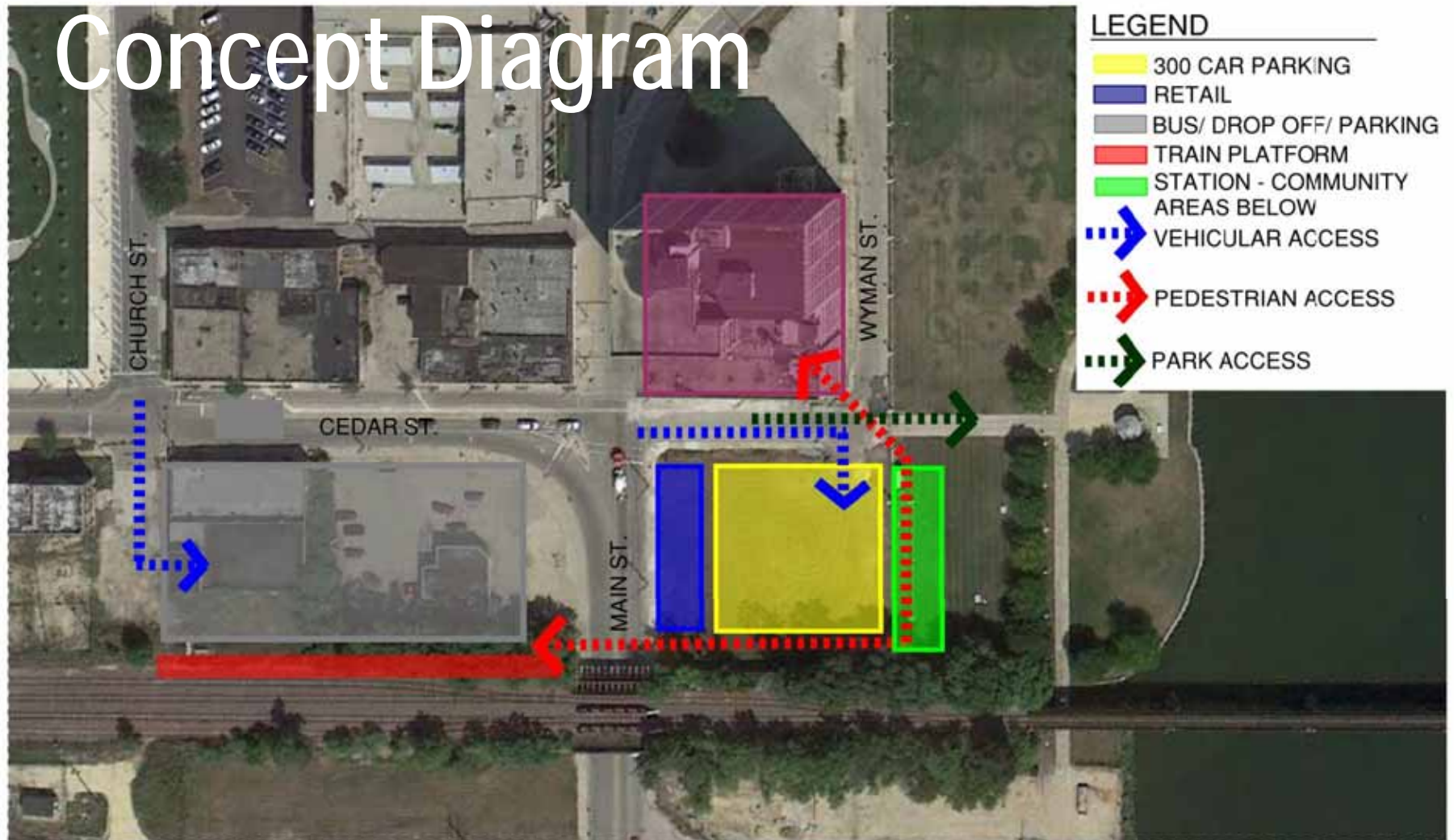


Park Concept

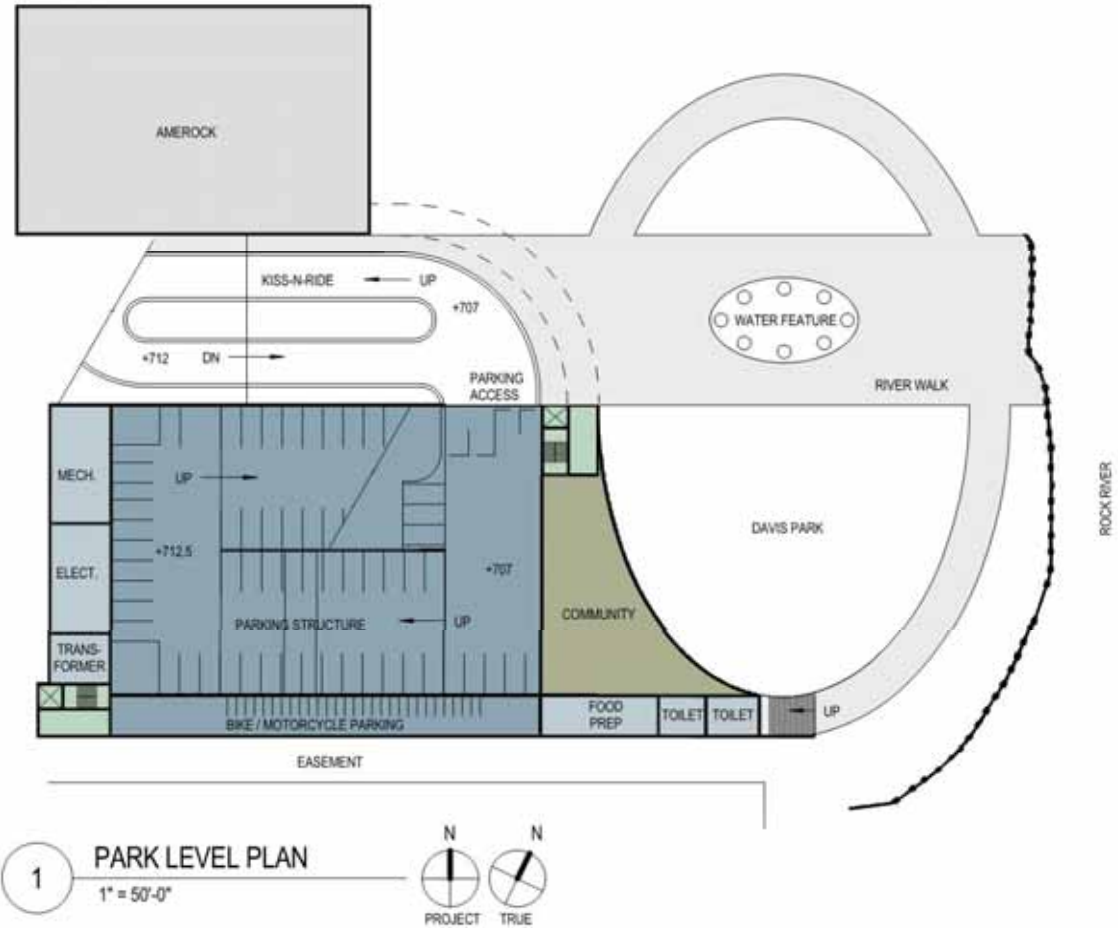
LEGATARCHITECTS

sustainability performance design

Concept Diagram

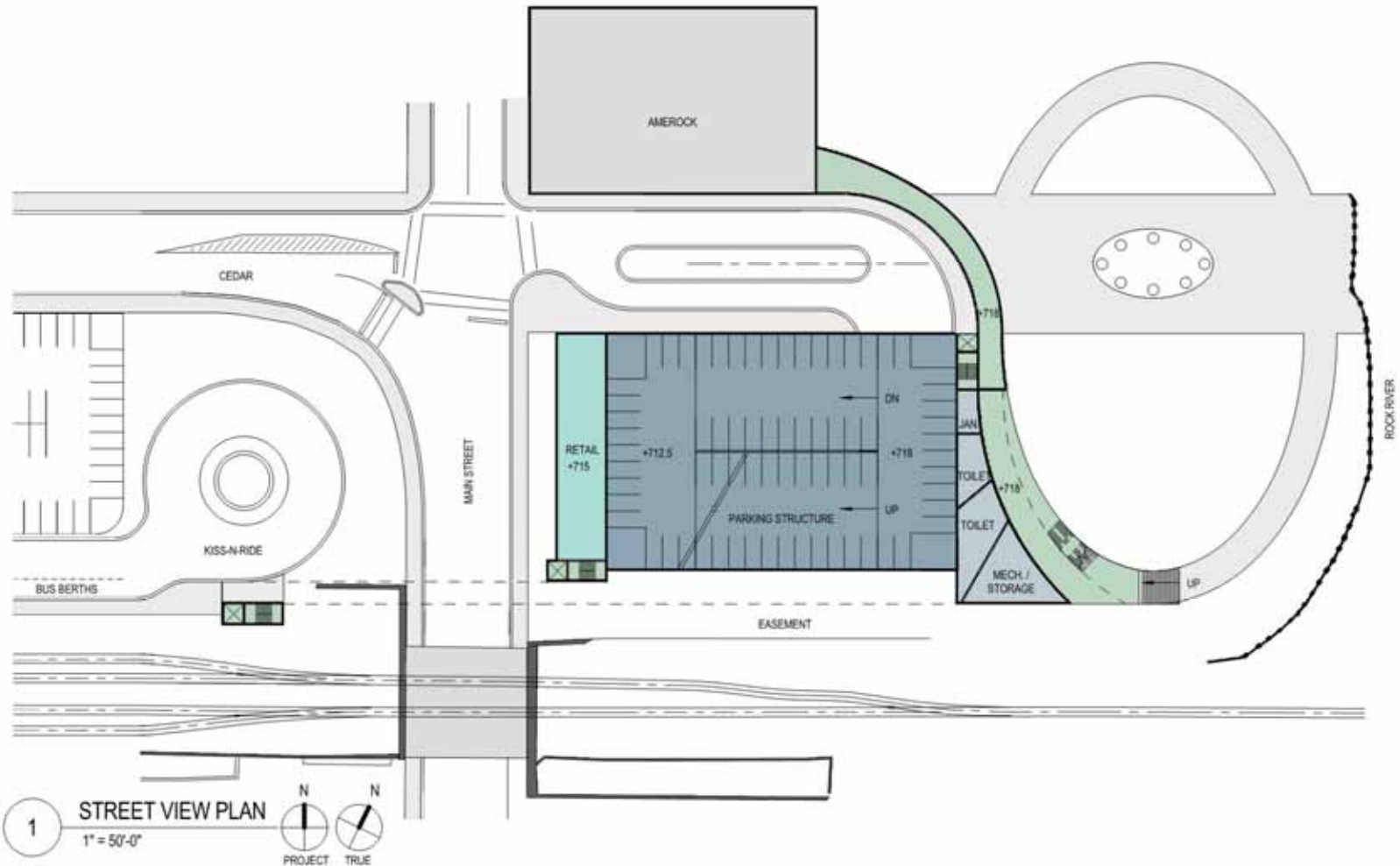


ROCKFORD REGIONAL MULTI-MODAL TRANSPORTATION CENTER

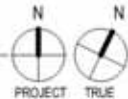


ROCKFORD REGIONAL MULTI-MODAL TRANSPORTATION CENTER

11.03.2014
Rockford, IL

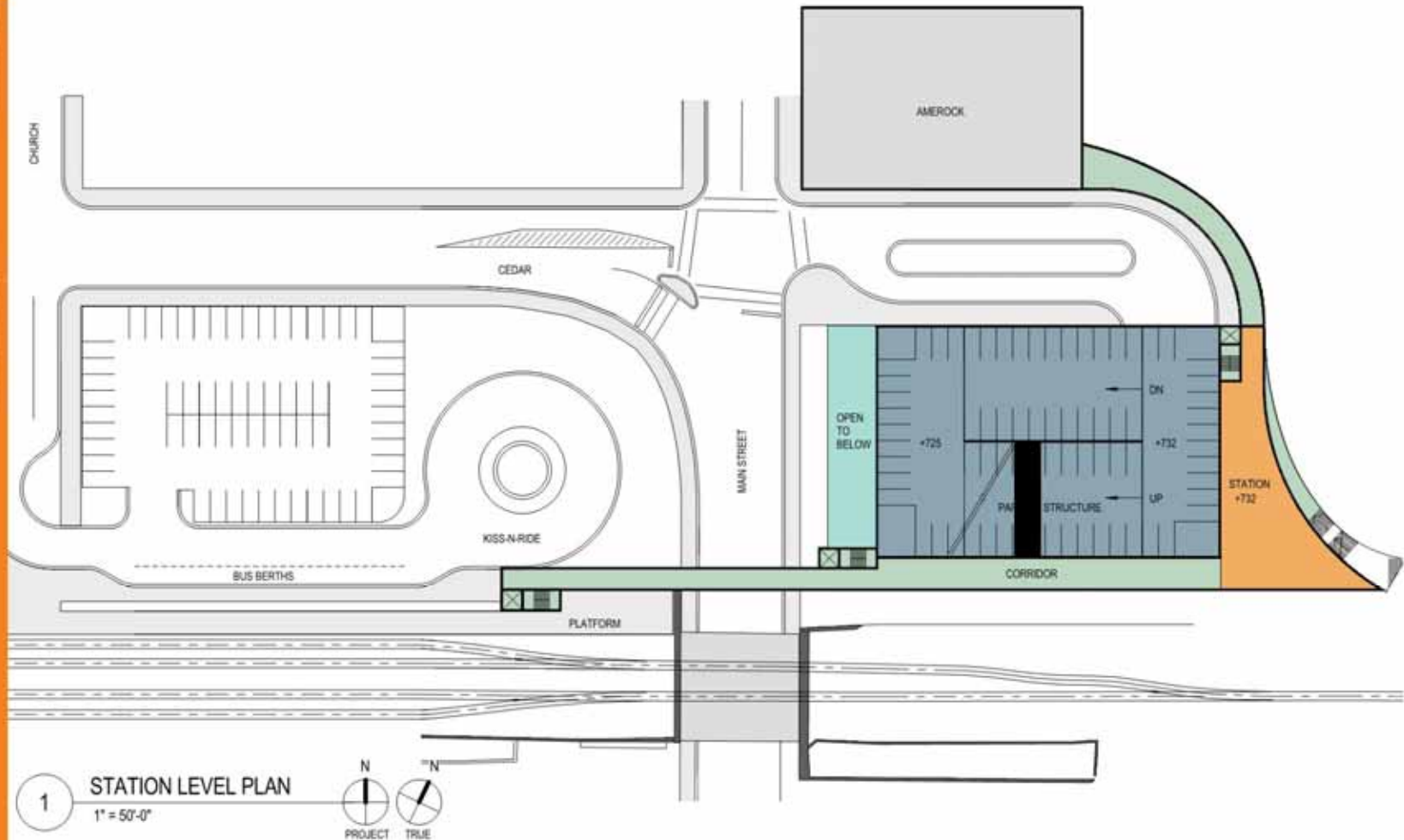


1 STREET VIEW PLAN
1" = 50'-0"



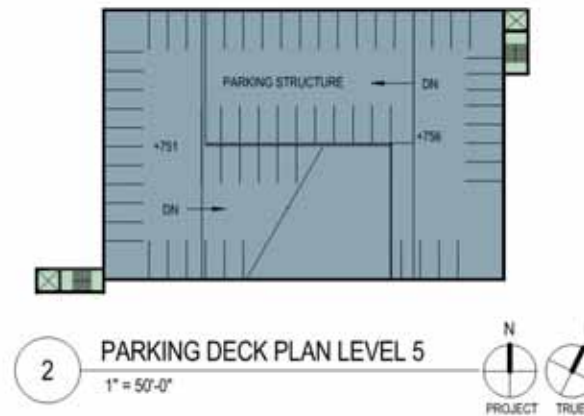
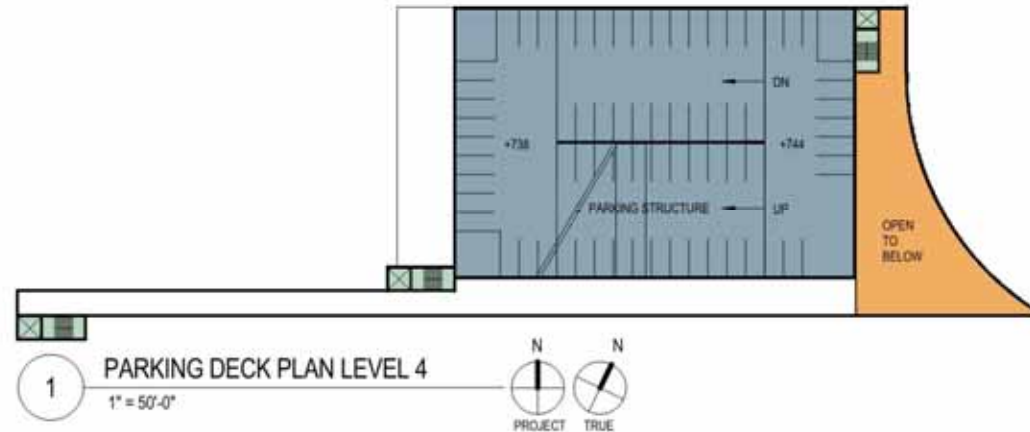
A-302 OPTION 3 - STREET LEVEL PLAN

Rockford, IL

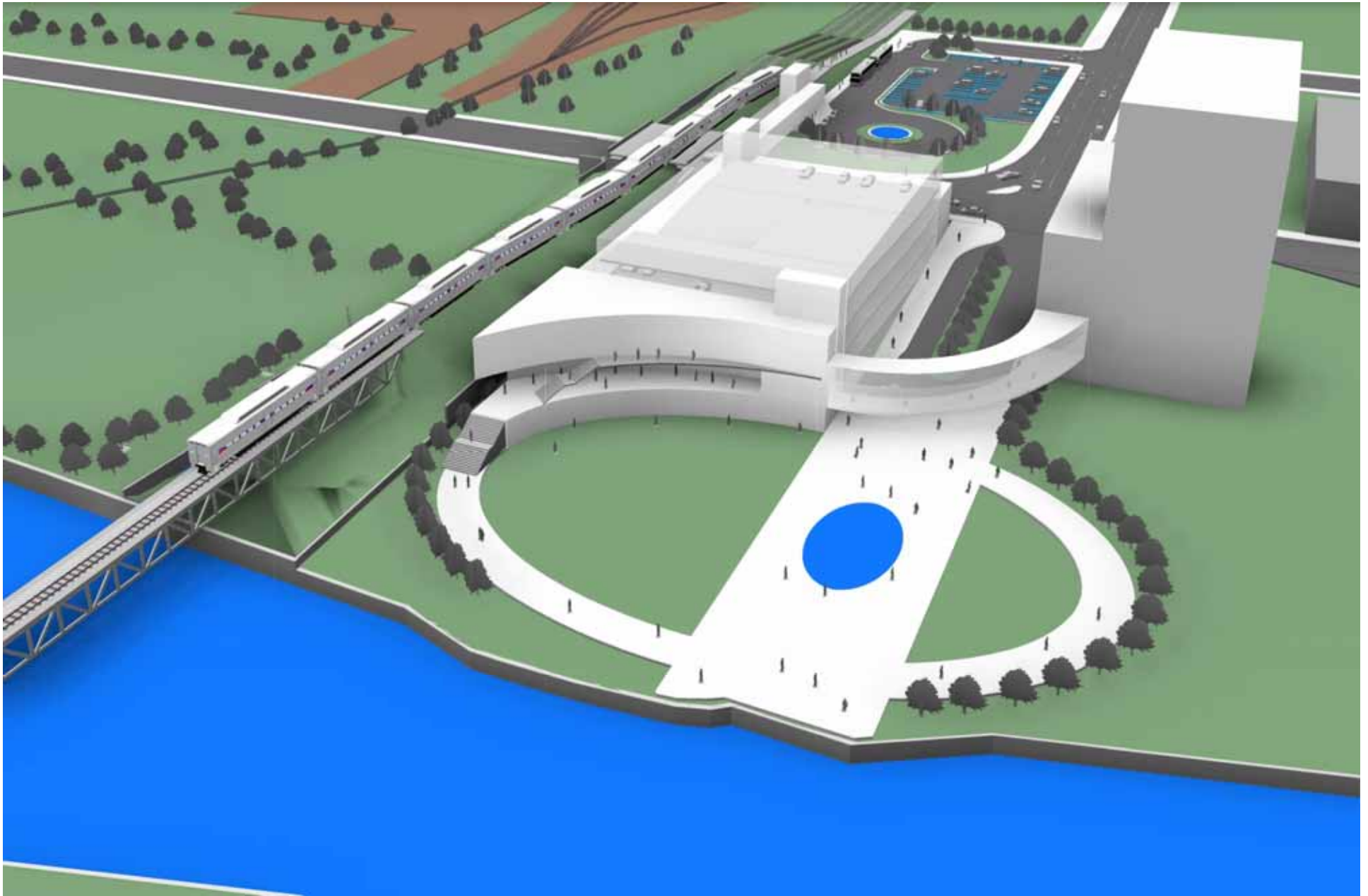


A-303 OPTION 3 - STATION LEVEL PLAN

11.03.2014
Rockford, IL



A-304 OPTION 3 - PARKING DECK PLAN



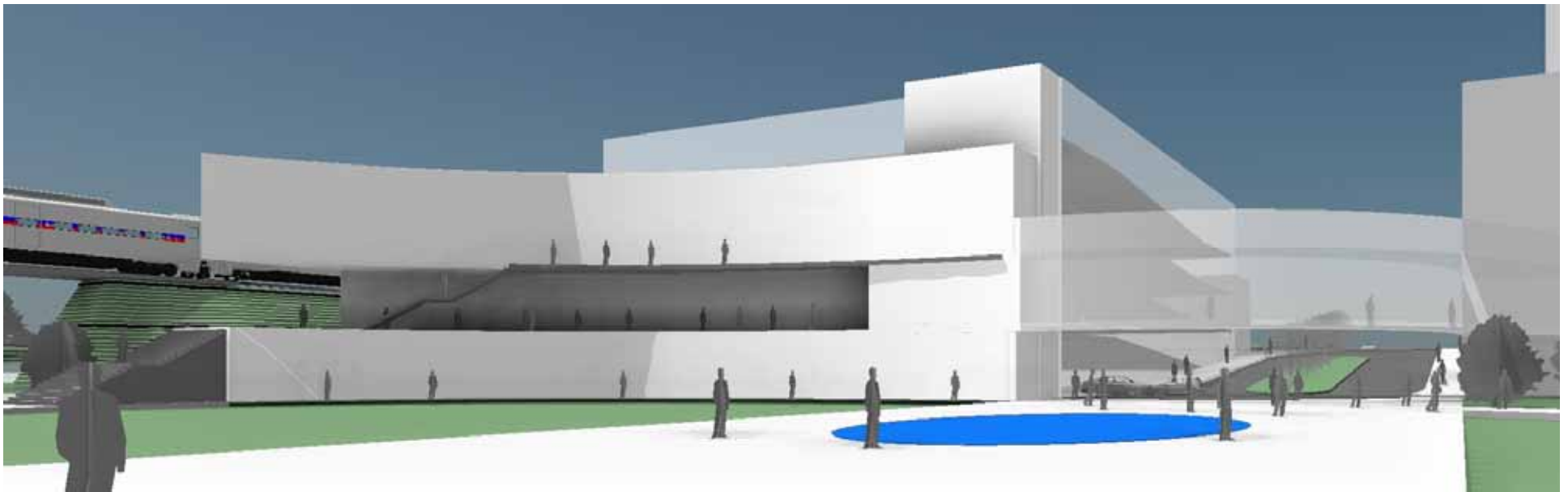
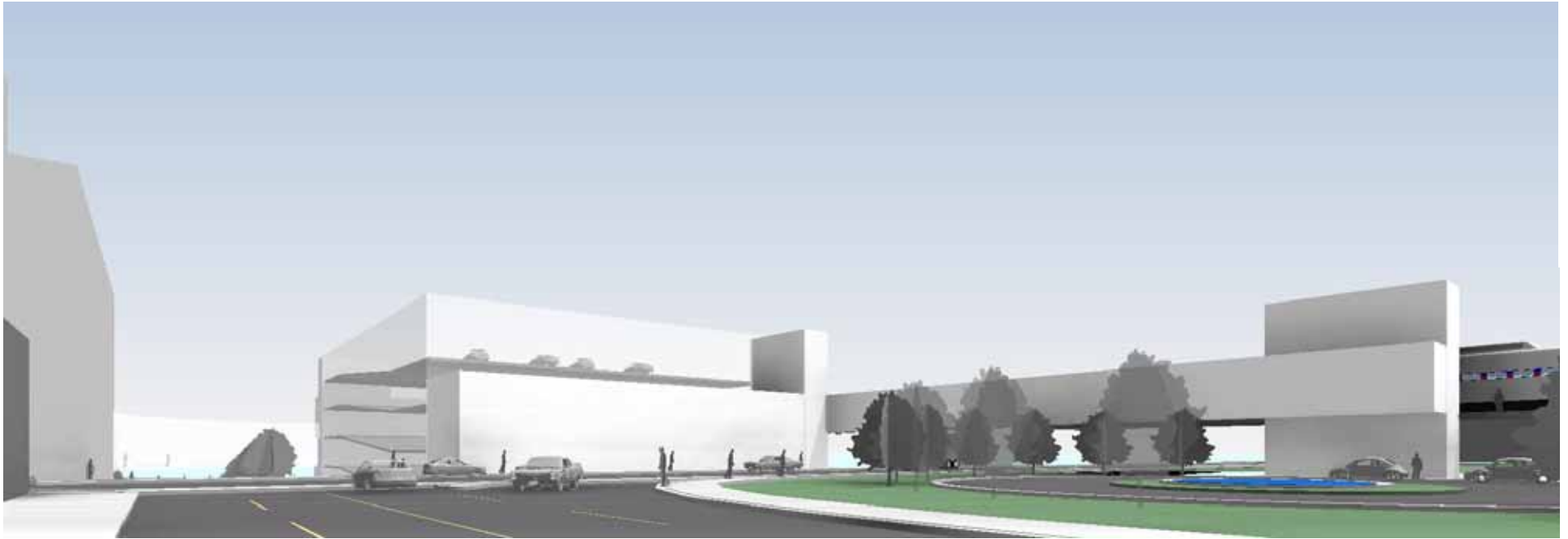
LEGATARCHITECTS

sustainability performance design



LEGATARCHITECTS

sustainability performance design



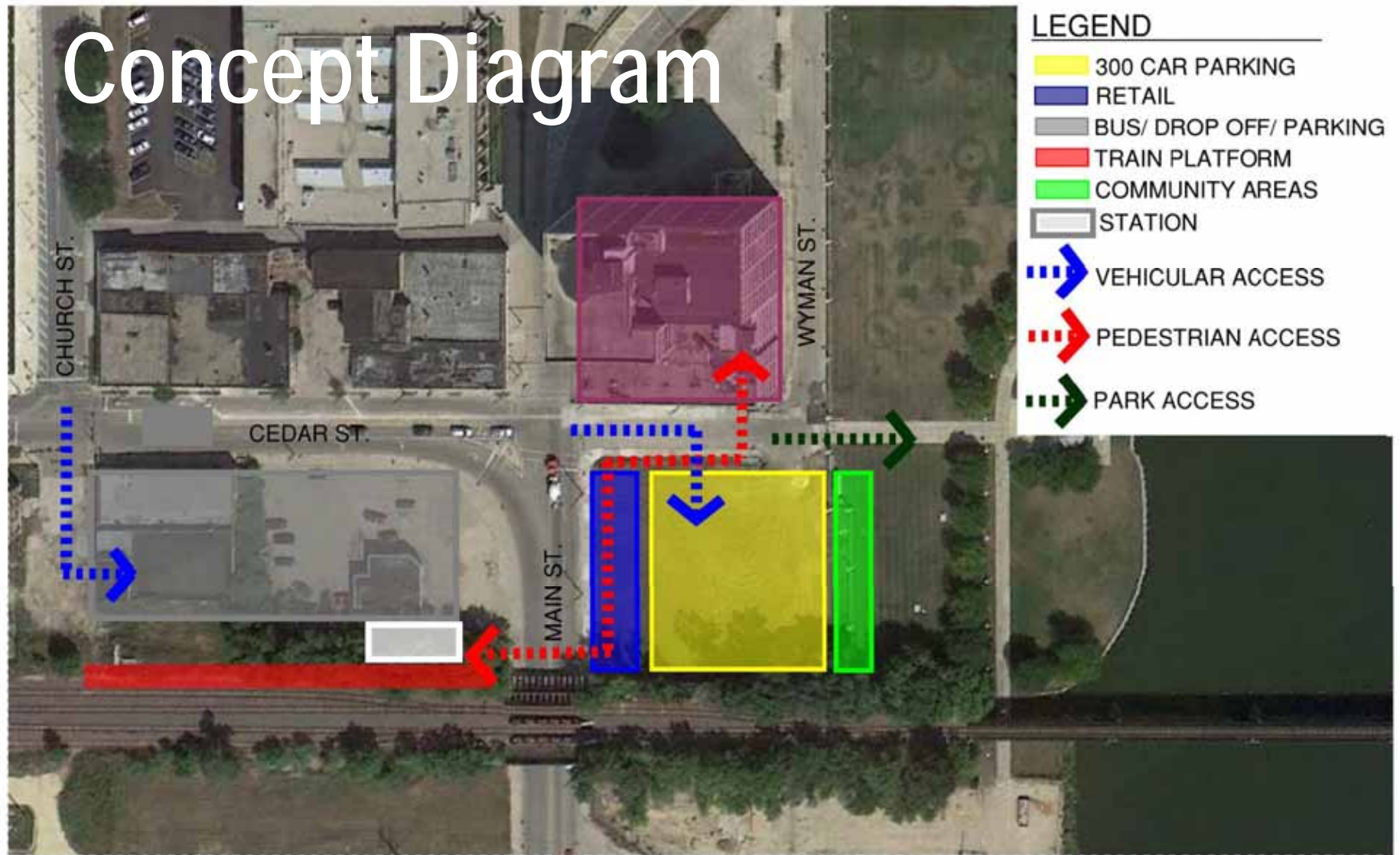
LEGATARCHITECTS

sustainability performance design

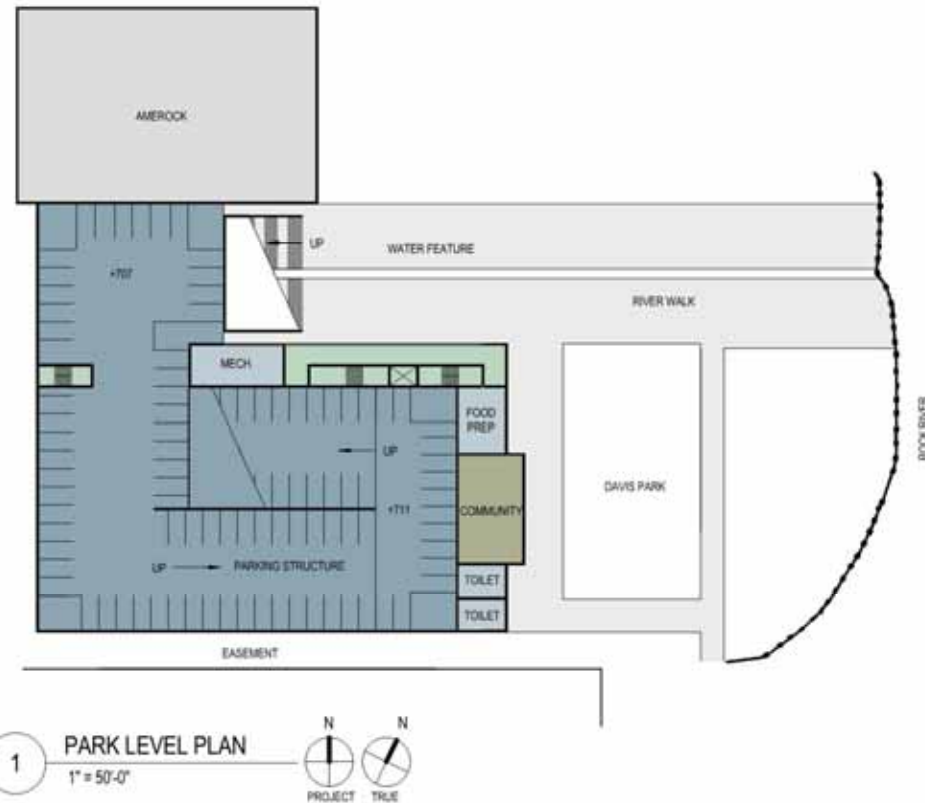
Rail Concept



Concept Diagram



11.03.2014
Rockford, IL



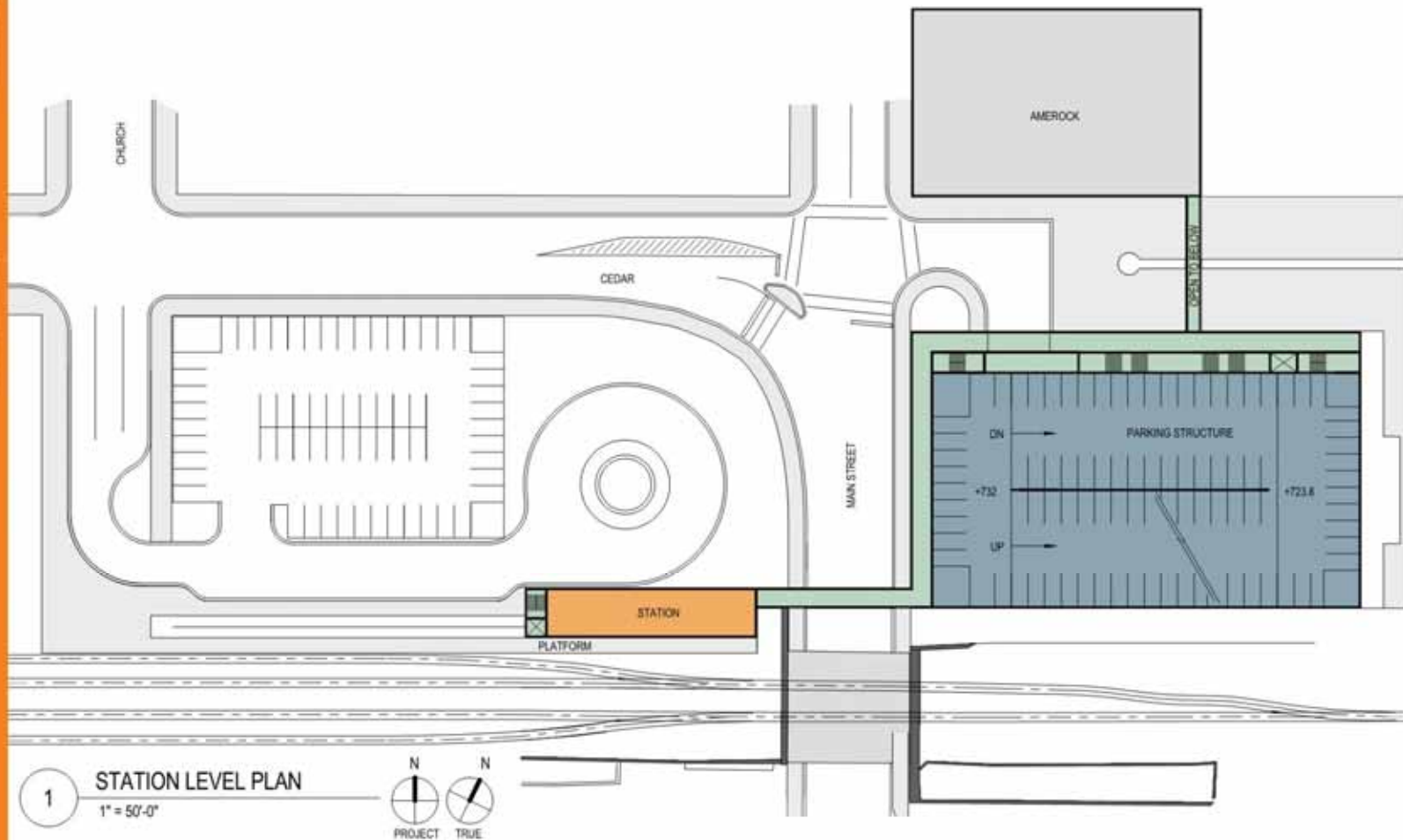
A-401 OPTION 4 - PARK LEVEL PLAN

11.03.2014
Rockford, IL



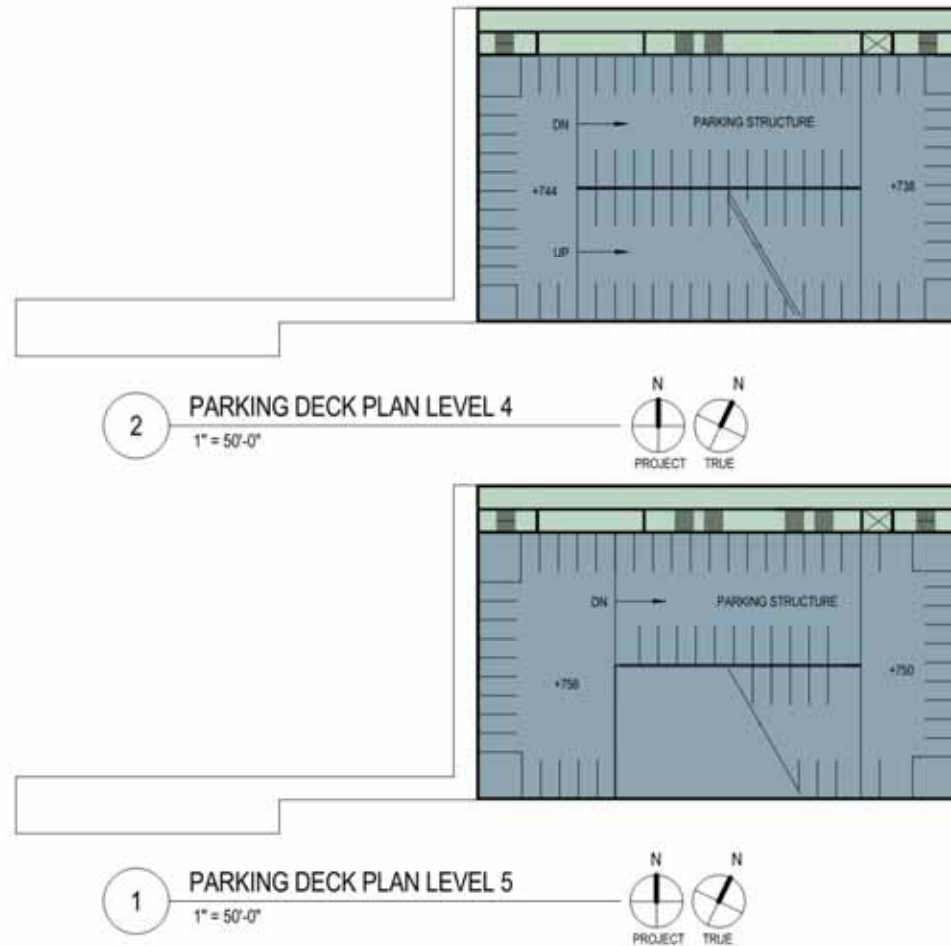
A-402 OPTION 4 - STREET LEVEL PLAN

11.03.2014
Rockford, IL

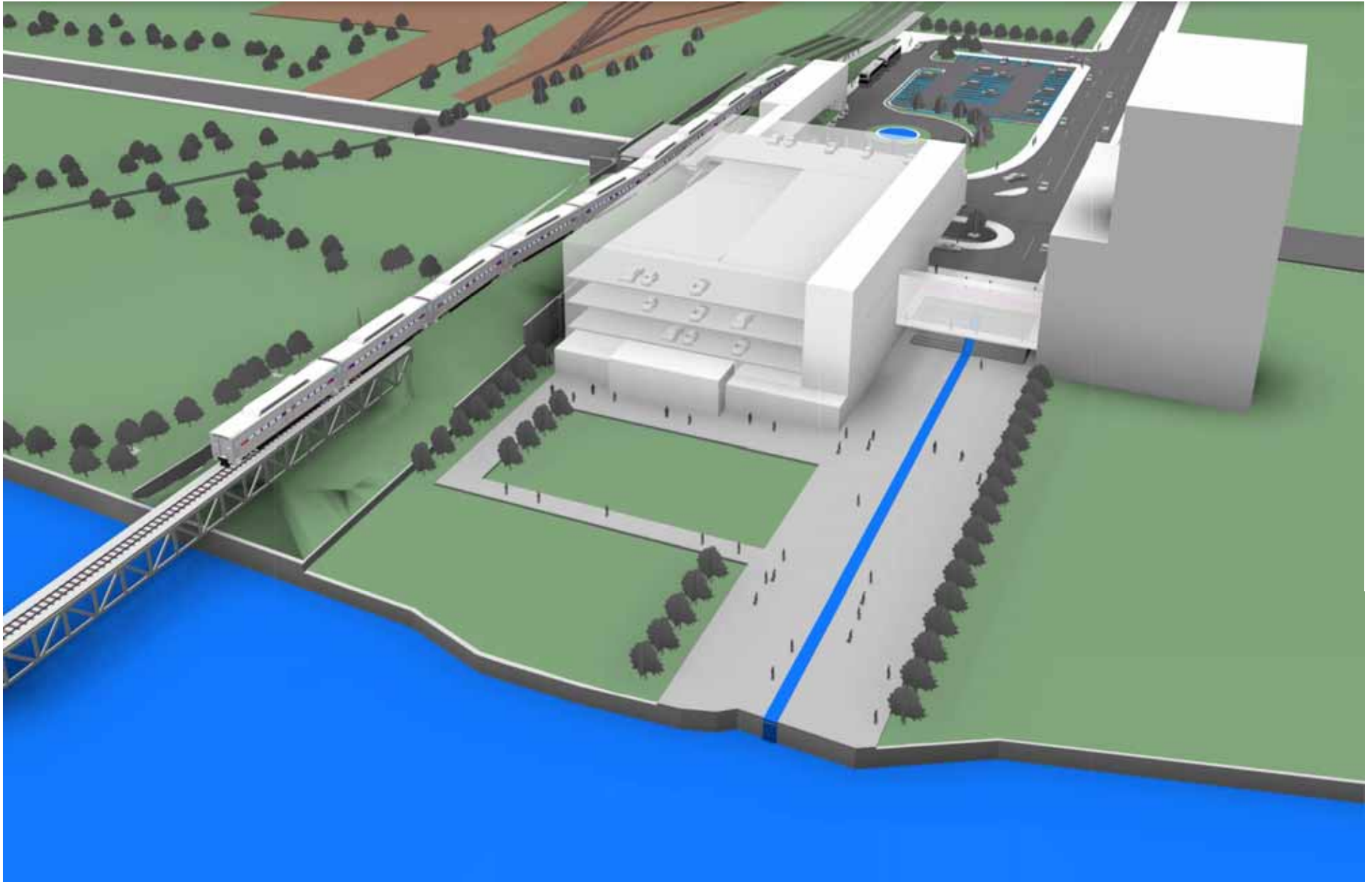


A-403 OPTION 4 - STATION LEVEL PLAN

11.03.2014
Rockford, IL



A-404 OPTION 4 - PARKING DECK PLAN



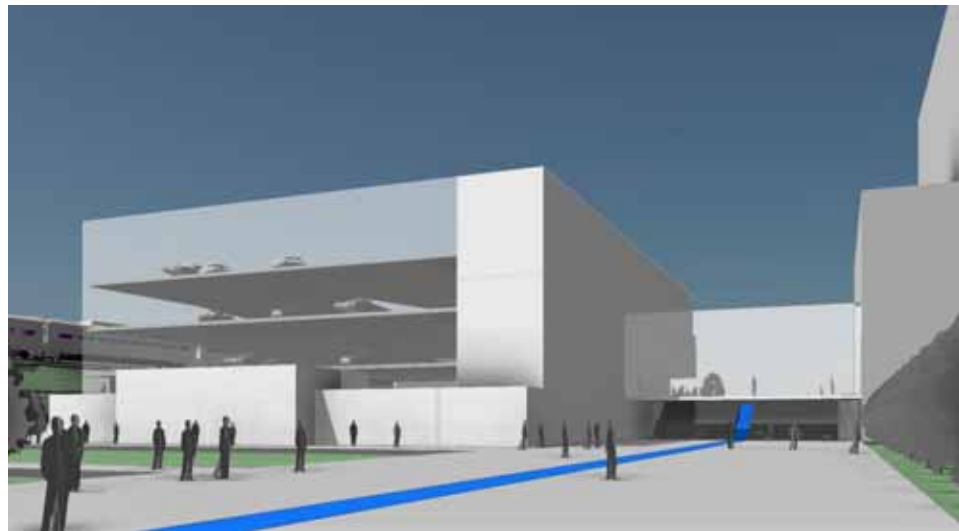
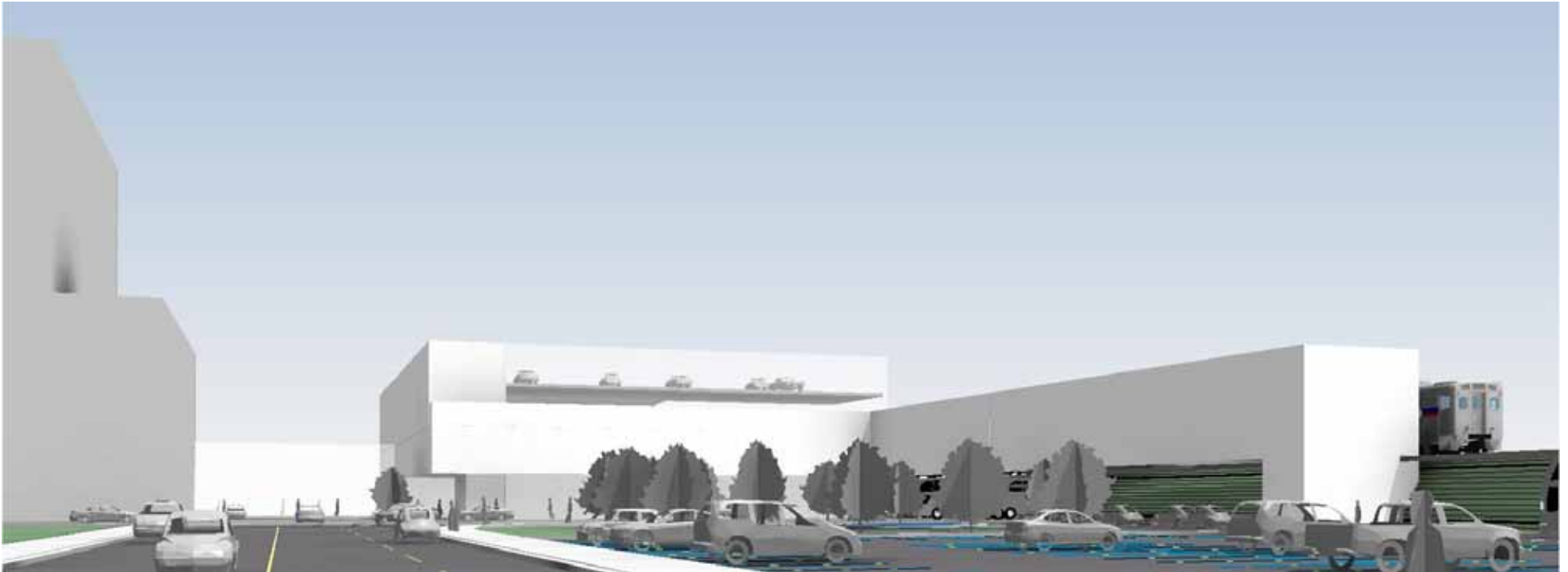
LEGATARCHITECTS

sustainability performance design



LEGATARCHITECTS

sustainability performance design



LEGATARCHITECTS

sustainability performance design



QUESTIONS AND ANSWERS

LEGATARCHITECTS

sustainability performance design



NEXT STEPS

LEGATARCHITECTS

sustainability performance design