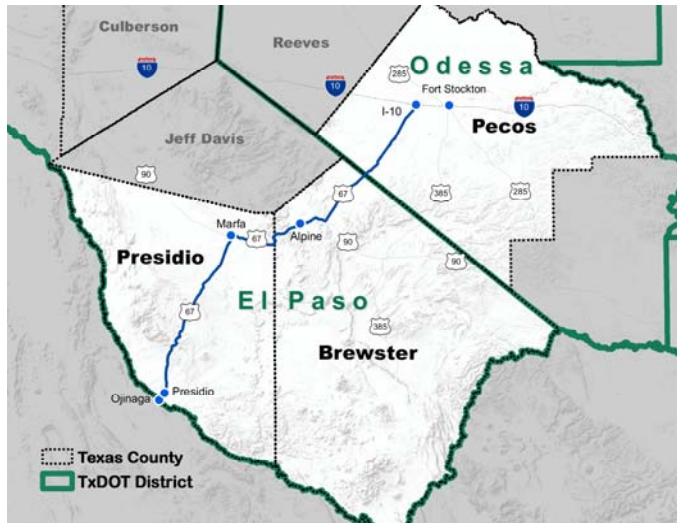


US 67 Corridor Master Plan

Overview

The US 67 corridor stretches 142-miles from Interstate 10 west of Fort Stockton to the Presidio/Ojinaga Port of Entry on the U.S./Mexico border. US 67 provides access to the towns of Marfa, Alpine, Presidio, and surrounding communities, as well as Big Bend National Park, Sul Ross State University, the Marfa Lights, Big Bend Ranch State Park, Fort Leaton State Park, and Fort Davis attractions. It serves multiple communities with diverse needs and priorities. This rural area has experienced significant growth in recent years, and TxDOT is undertaking a corridor study to help determine the current and future transportation needs to best serve the communities along US 67.



What is a Corridor Master Plan?

A Corridor Master Plan

- Defines existing transportation challenges and opportunities and considers, evaluates, and provides possible solutions.
- Documents and evaluates the community's future vision regarding transportation and develops a set of recommendations to enhance safety and mobility.
- Includes data collection, public outreach, analysis of current and future transportation needs, and identification of potential projects.

Why is TxDOT Doing This Study?

TxDOT wants to be proactive in planning for a safe and efficient corridor.

- The US 67 Corridor has experienced increasing traffic driven by many factors including population growth, additional tourism and special events, international commerce, and Permian Basin oil field development.
- This has led to a number of safety and transportation issues. For example, from 2010 to 2016 there were over 600 crashes along the corridor, including 100 injury crashes and 11 fatal accidents.
- The US 67 Corridor Master Plan will identify current and future needs along US 67, and provide a set of recommended projects for short-, medium-, and long-term implementation.

How Can I Participate?

TxDOT is planning extensive public outreach, and will be announcing our meetings through news outlets and various other media. In order to develop the best plan, we need your input. We will provide multiple avenues for ongoing public engagement to ensure the plan incorporates the needs and concerns of local communities and provides appropriate recommendations.

- TxDOT will conduct extensive public outreach throughout the study process, holding focus group and public meetings at major study milestones.
- TxDOT will work with local communities and public officials to get ideas on how the public involvement effort will proceed and to understand corridor needs based on input from the communities.
- The study will follow a process defined in close consultation with corridor communities and focus group members.
- Given the diverse nature of the corridor, effective communication and engagement will be conducted throughout the study effort.

Schedule

Currently, public meetings are planned to be held in the Spring of 2018, the Fall of 2018, and the Spring of 2019. The study is expected to be completed in the Fall of 2019.

Contact Information

Rebecca Reyes
TxDOT El Paso District
13301 Gateway Blvd West
El Paso, TX 79928
915.790.4205
rebecca.reyes@txdot.gov

