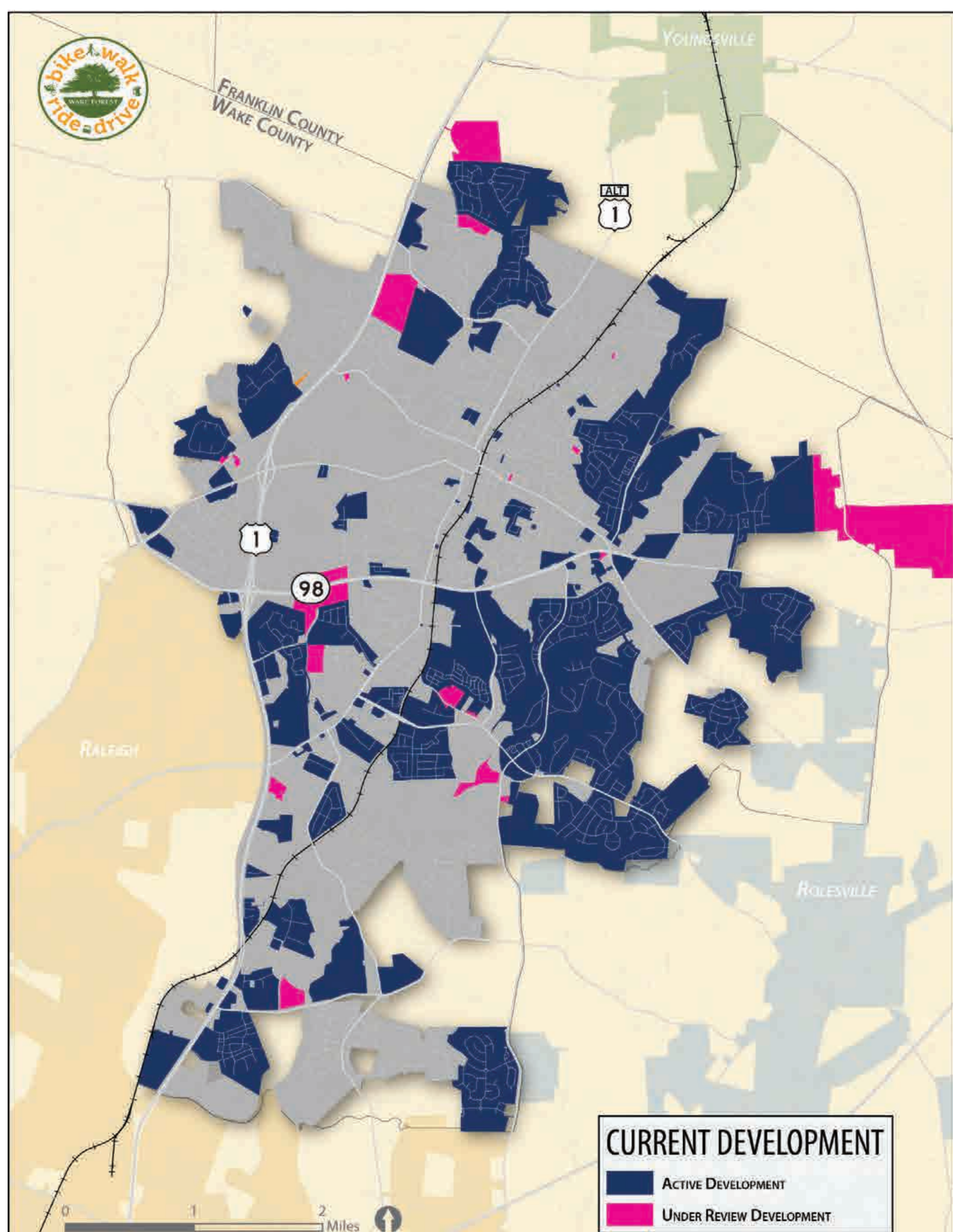
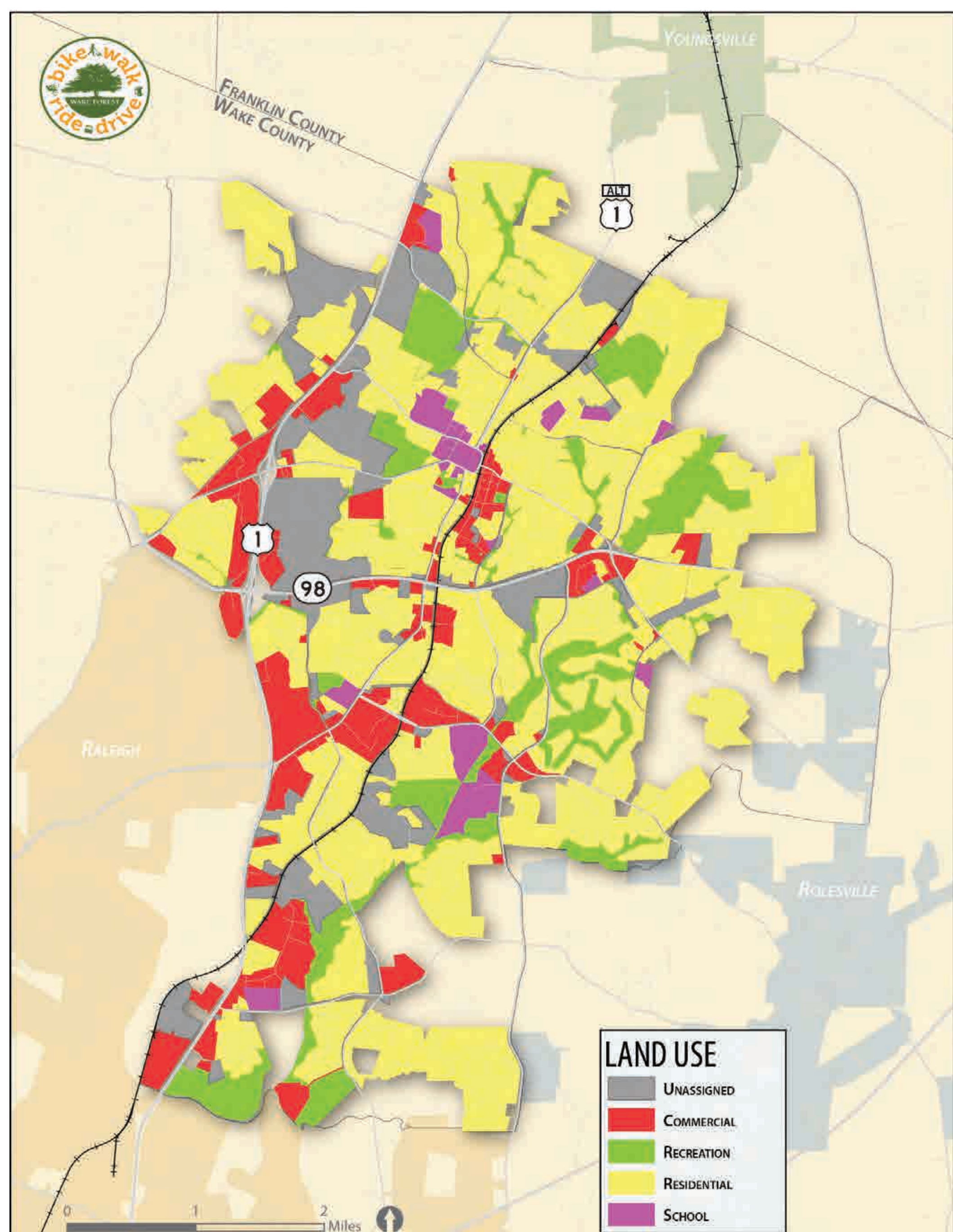




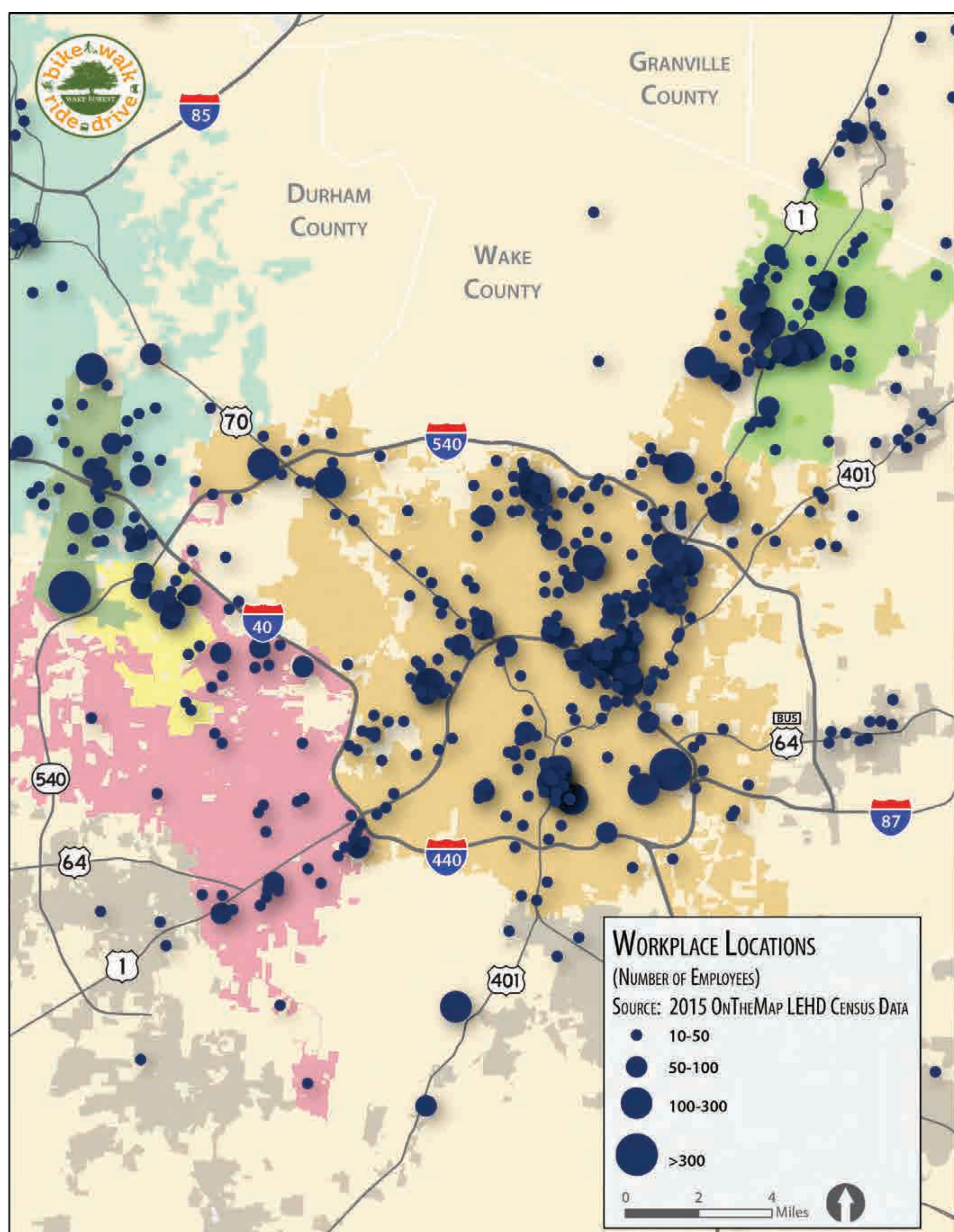
Existing Conditions | Land Use, Development, and Workplace Locations



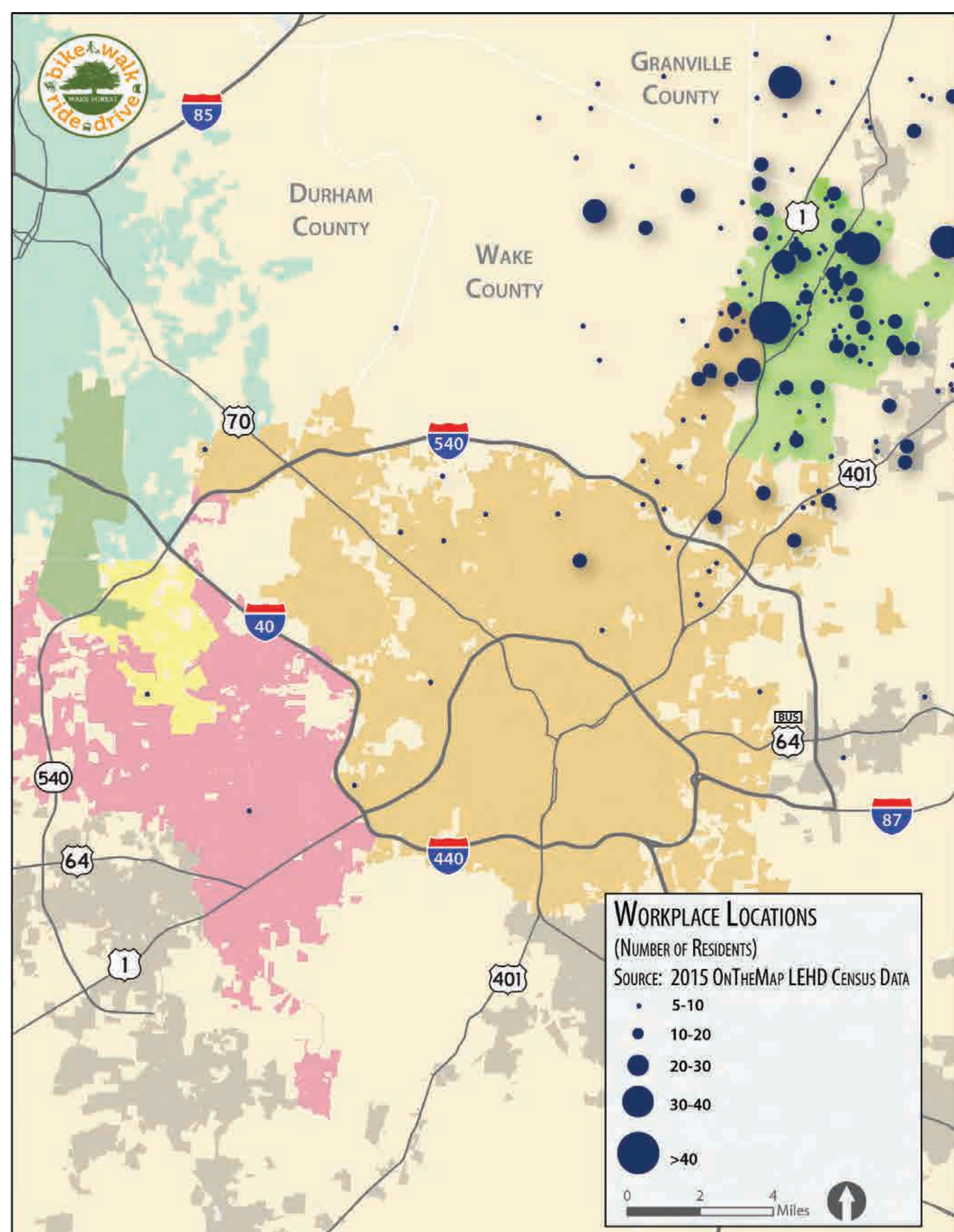
Wake Forest is currently witnessing a great influx of residential and commercial development primarily concentrated east and south of downtown. There are a total of 5.75 square miles of active and under review developments.



The Town of Wake Forest is primarily residential (59%) followed by commercial (12%) and recreational (11%). 15% of the town is currently not zoned.



This map shows where Wake Forest residents work. Most workplaces are concentrated along Capital Boulevard between I-440 and I-540. Other significant concentrations are Downtown Raleigh, Wake Med and RTP.



This map shows the residence locations for the people who work in the Town of Wake Forest. Most people who work in Wake Forest live within or close to the town.