

Borough-wide Pedestrian Accessibility Transportation Plan

Phoenixville, PA

Purpose:

to identify and address
weaknesses in the sidewalk
network throughout
Phoenixville Borough

Previous Efforts

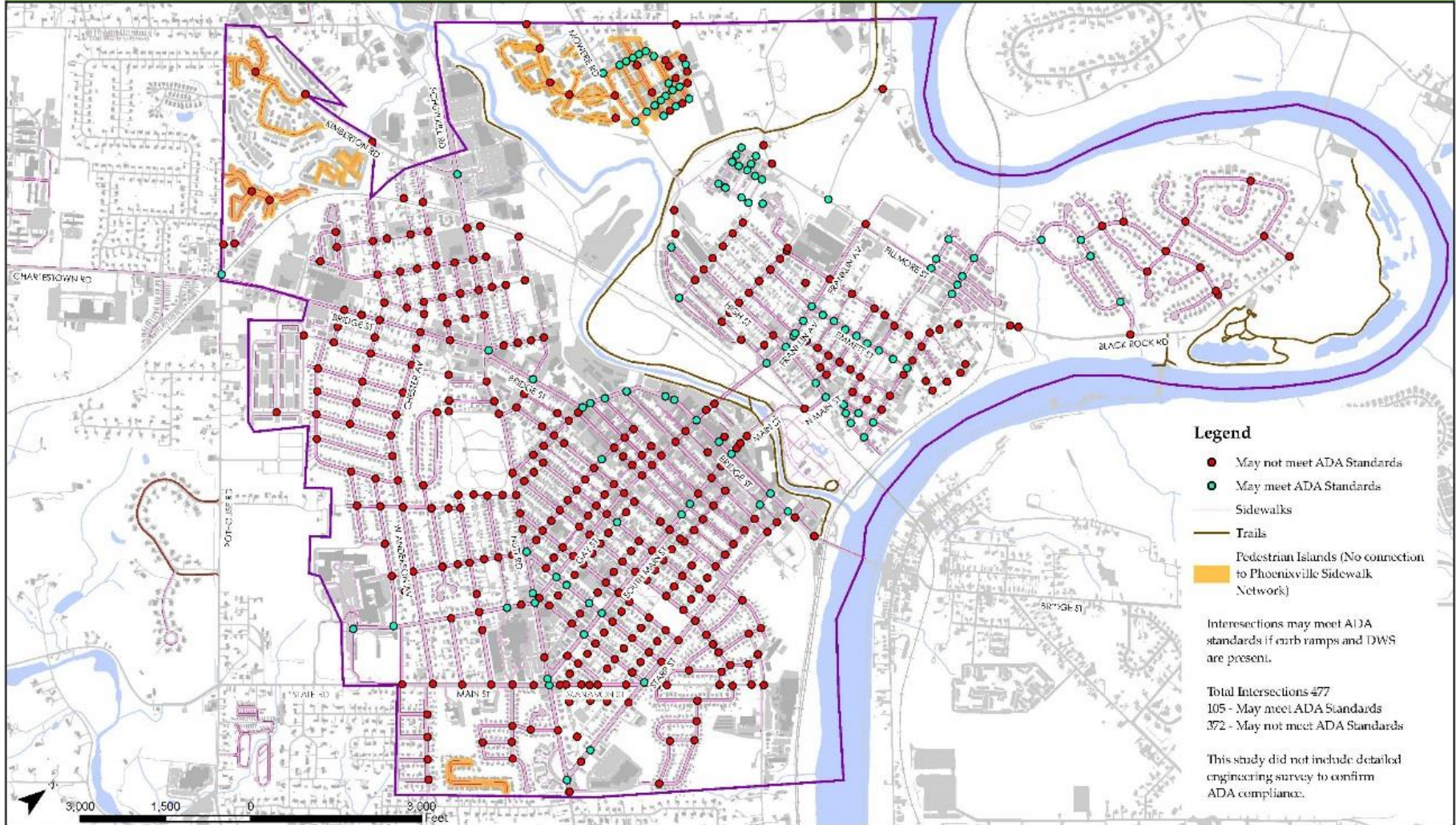
- DRAFT Phoenixville Regional Comprehensive Plan (PRPC, 2019)
- Phoenixville Region Multimodal Transportation Plan (CCPC, 2018)
- Park Phoenixville (Phoenixville, 2017)
- Sidewalk Feasibility Study (Schuylkill Township, 2016)
- Phoenixville-Mont Clare Connector Trail Feasibility Study and Alternatives Analysis (GVFTMA, 2013)
- Phoenixville Borough Comprehensive Plan (Phoenixville, 2011)

Existing Conditions

- Almost 80 miles of sidewalk
- 477 intersections with crosswalks
 - Approximately 80% do not meet Americans with Disabilities Act (ADA) requirements
- 18 traffic signals
 - Six lack full pedestrian accommodations and signal equipment

Intersections, Sidewalks and Trails

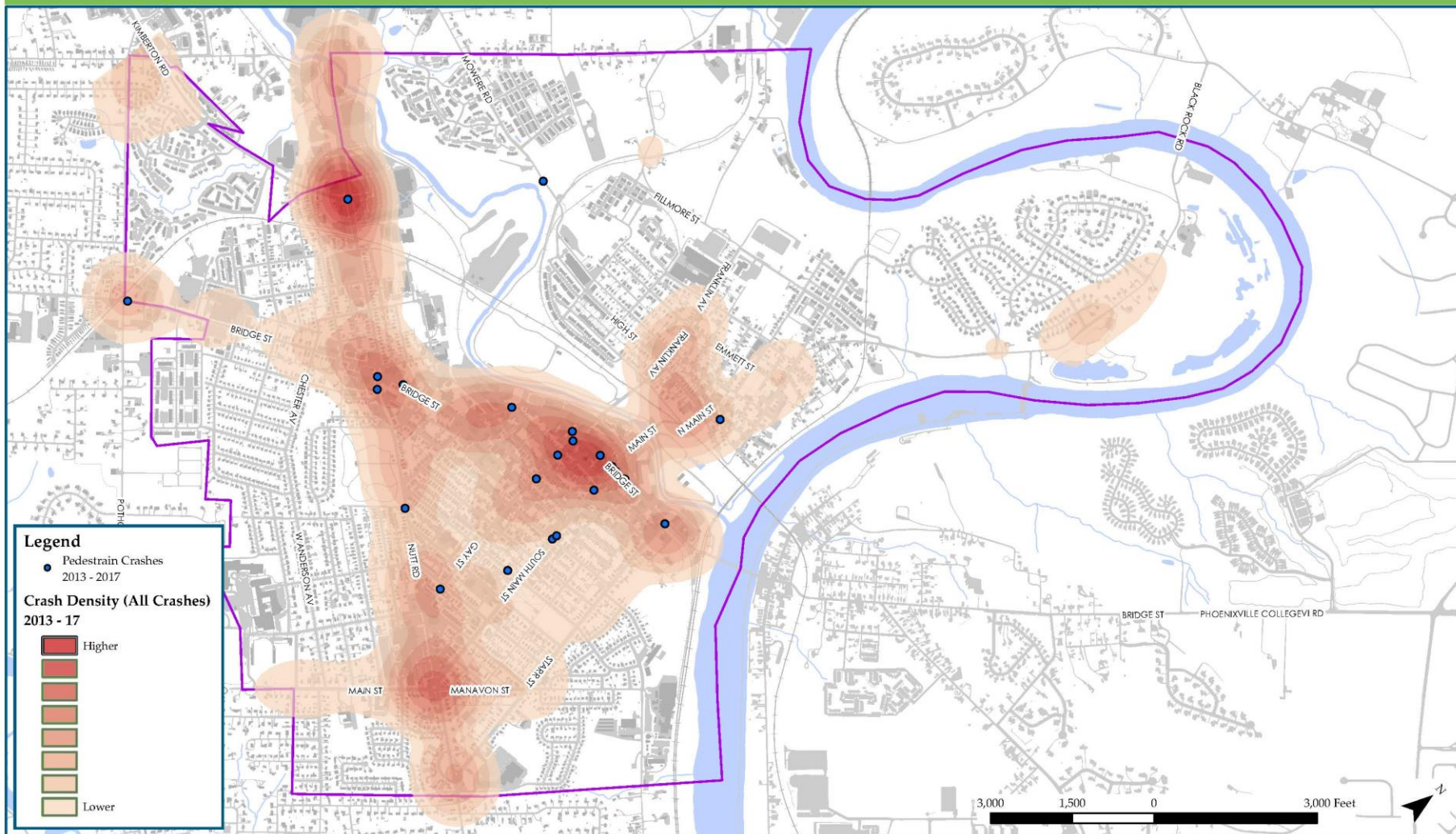
Phoenixville Pennsylvania



5-24-19 / Project # 817091 / DRAFT

PHOENIXVILLE PEDESTRIAN STUDY

CRASH DENSITY



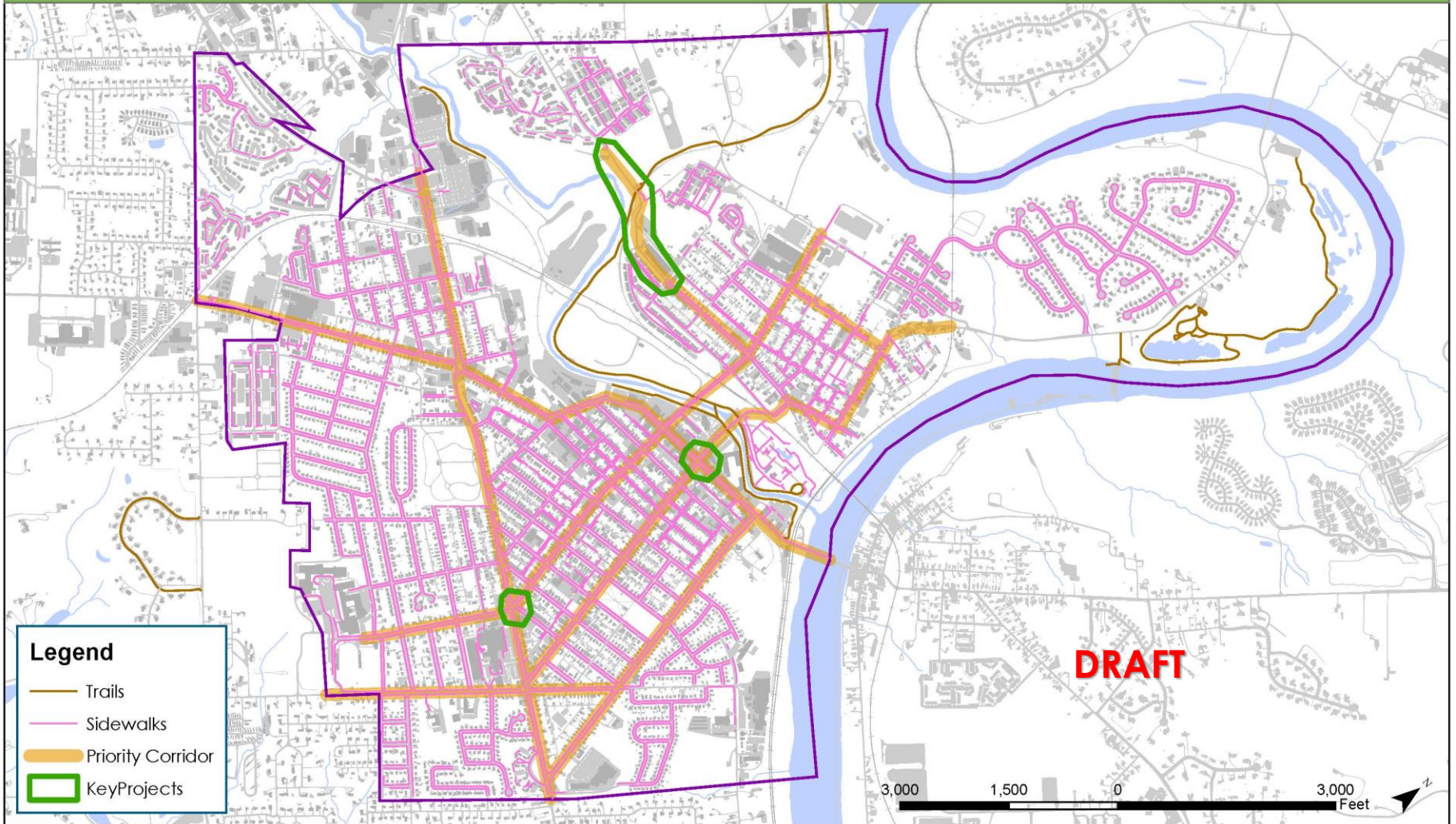
5-24-19 / Project # 817091 / DRAFT

Key Corridors / Preliminary Priorities

- Downtown (Bridge Street) and connections to get people downtown
- Student commuting corridors
- Gaps in the network
- Connections to shopping centers
- Barriers to handicapped accessibility

Priority Corridors and Key Projects

Phoenixville Pennsylvania



8-16-19 / Project # 817091

Policies

- Chapter 15: Motor Vehicles and Traffic
- Chapter 21: Streets and Sidewalks
- Chapter 22: Subdivision and Land
Development
- Chapter 27: Zoning

Next Steps

- Gather community input on issues (tonight's meeting)
- Refine priorities and implementation strategies
- Prepare draft report
 - Available for public review by mid-September
- Adopt plan at upcoming Council Meeting

Questions/Comments?

Visit

walkphoenixville.mindmixer.com